



# Sold

**MOTIVATED VENDORS ADJUST PRICE TO ALL OFFERS OVER \$489,000 CONSIDERED. DON'T DELAY.**

**3 BED | 2 BATH | 1 CAR**

13 Harvey Lane, Meridan Plains, QLD, 4551

If you have been looking to invest in the Sunshine Coast market, then do not miss out on this entry level property in Meridan Plains.

Ideally positioned within walking distance to two local college's Pacific Lutheran College, Meridan College and Bambino's child care centre. You are only minutes to the local Parklands Shopping Centre including Aldi, Parklands Tavern, Aust Post and Medical precinct to name a few. Next door to the shopping centre is a service station with multiple facilities.

Features of the property include:

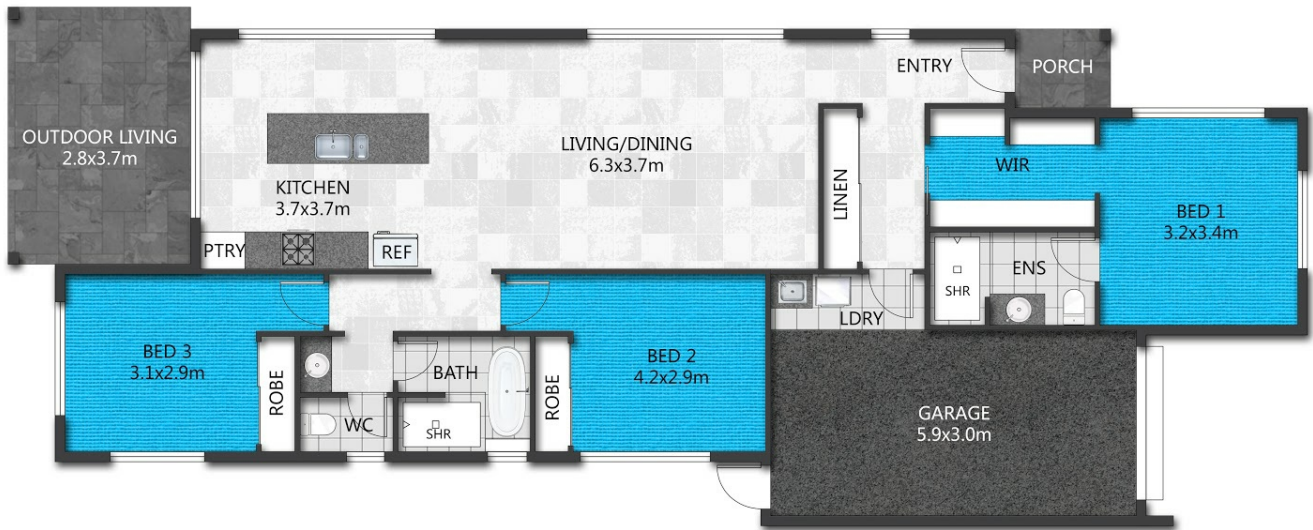
- + Open plan living, dining and kitchen area
- + Reverse cycle air-conditioning to living area and main bedroom
- + Master bedroom with ensuite and walk-in robe.
- + Outdoor entertaining overlooking a tranquil pond.
- + Short walk to the local family park.
- + Property is currently tenanted, so ideal for the investor or owner occupier not looking to move in immediately.
- +No Body Corporate Fees

PRICE:  
\$485,000

OPEN FOR INSPECTION:  
N/A



**Greg Pratt**  
**0413 624 308**  
greg@coastaledgerealestate.com.au



FLOORPLAN

TOTAL AREA : 138.21m<sup>2</sup>

This floor plan including furniture, fixture measurements and dimensions are approximate and for illustrative purposes only. Coastal Edge Real Estate gives no guarantee, warranty or representation as to the accuracy and layout. All enquiries must be directed to the agent, vendor or party representing this floor plan.

13 Harvey Lane, Meridan Plains