



SOLD

EXECUTIVE LIVING WITH STYLE AND CONVENIENCE

Positioned in a prime location in the sought after area of Glenorchy lies this well built, modern and stylish rendered townhouse. Suitable to a range of buyers who desire to enter the market, upsize, downsize or invest, this home is a great choice as the area is booming!

The home itself has everything you need including 3 good size bedrooms all with built in robes, and ensuite off the main, a separate bathroom to service the other rooms, and even a separate powder room downstairs. The kitchen is well appointed and includes a generous pantry, overhead cupboards, stone benchtops and attractive tiles for the floor and splashback.

The dining and living are spacious and open plan with a natural ample flow of sunlight streaming into the elevated rooms and Tas oak floorboards featured throughout the main living.

As you enter the home, you are met with a stunning split level entry featuring a glass door and large glass window panel, and Tas oak stair case and balustrade. The floor plan is practical and functional.

Downstairs you can find a large laundry, powder room, under stair storage and a large garage, and although its a single door, it is much deeper than a standard single garage. There are extra visitor parking spots available on the common areas.

Outside you can find a fully fence yard that is split level and easy to maintain. The first level is a courtyard suitable for BBQ's and entertaining, and the higher level is grassed and suitable for pets and kids to play.

With various nearby options for schools, shopping, amenities and other sought after services including the library, post office, gyms, cafes, and more, this home is not going to last.

Be the first to call me for an inspection and be sure not to miss out on this rare opportunity.

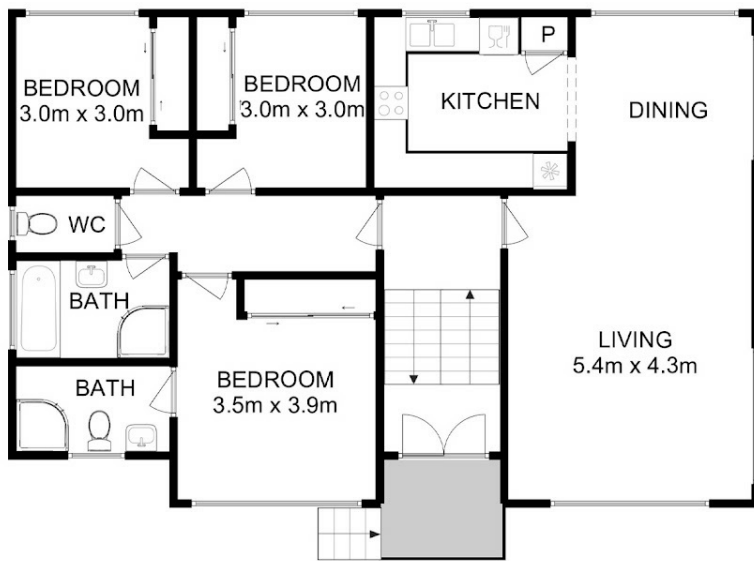
3 BED | 2 BATH | 1 CAR

PRICE:
\$625,000

OPEN FOR INSPECTION:
N/A



Kimberley Chambers
0439727132
kchambers@atrealty.com.au
www.atrealty.com.au



UPPER FLOOR



LOWER FLOOR

All measurements are internal and approximate.
 This plan is a sketch for illustration, not valuation.
 Produced by Open2view.com

Approx. house area: 173 sqm



Disclaimer: Please note this floor plan is for marketing purposes and is to be used as a guide only. All dimensions are estimates only and may not be exact measurements.