

SOLD

BEACHFRONT 3 BEDROOM APARTMENT

140m2 BEACHFRONT 3 BEDROOM APARTMENT Plus Garage and Storage. Experience living across from Bilinga Beach and wake up and walk across to one of the region's most pristine beaches, Bilinga and Kirra, swim in the warm crystal waters and then retire to the sundrenched under cover Alfresco balcony for a relaxed breakfast to start your day.

Features:

140m2 ground floor original 3 bedroom apartment. Live in, invest or holiday let, the choice is yours.

Open plan tiled lounge and dining area, opening to the spacious under cover balcony.

The kitchen offers plenty of bench and cupboard space with double sink and electrical appliances.

There are 3 bedrooms all with built-in wardrobes and the master has an ensuite.

The main bathroom has a bath / shower and vanity. There is a separate toilet plus a European style laundry.

Plenty of linen and storage cupboards within the hallway.

The property offers two entrances, one from the front balcony and the second through the main foyer area.

There is a tandem style enclosed garage 9m x 3m (2m of the garage is a lockable storage area, but can be easily removed if you need more car space).

Building:

Broadwalk Pacific is a small boutique apartment building of only 8 apartments.

Built approx. 1992 on 1012m2 of beachfront land.

Position:

Approx. 150m to North Kirra Surf Club and a short stroll to Kirra's thriving cafes and restaurants.

An easy flat walk to Coolangatta's shopping centres.

Motivation will come easy with endless beaches to walk or run and there are plenty of surf breaks to choose from.

The Gold Coast Airport is only minutes away.

If this is the lifestyle you would like, then make it happen, contact Michelle Topper today on 0400 362 639.

Disclosure statements and copy of the contract are available.

3 BED | 2 BATH | 1 CAR

PRICE:

\$998,000

OPEN FOR INSPECTION:

N/A



Michelle Topper

0400362639

michelle.topper@atrealty.com.au

www.atrealty.com.au

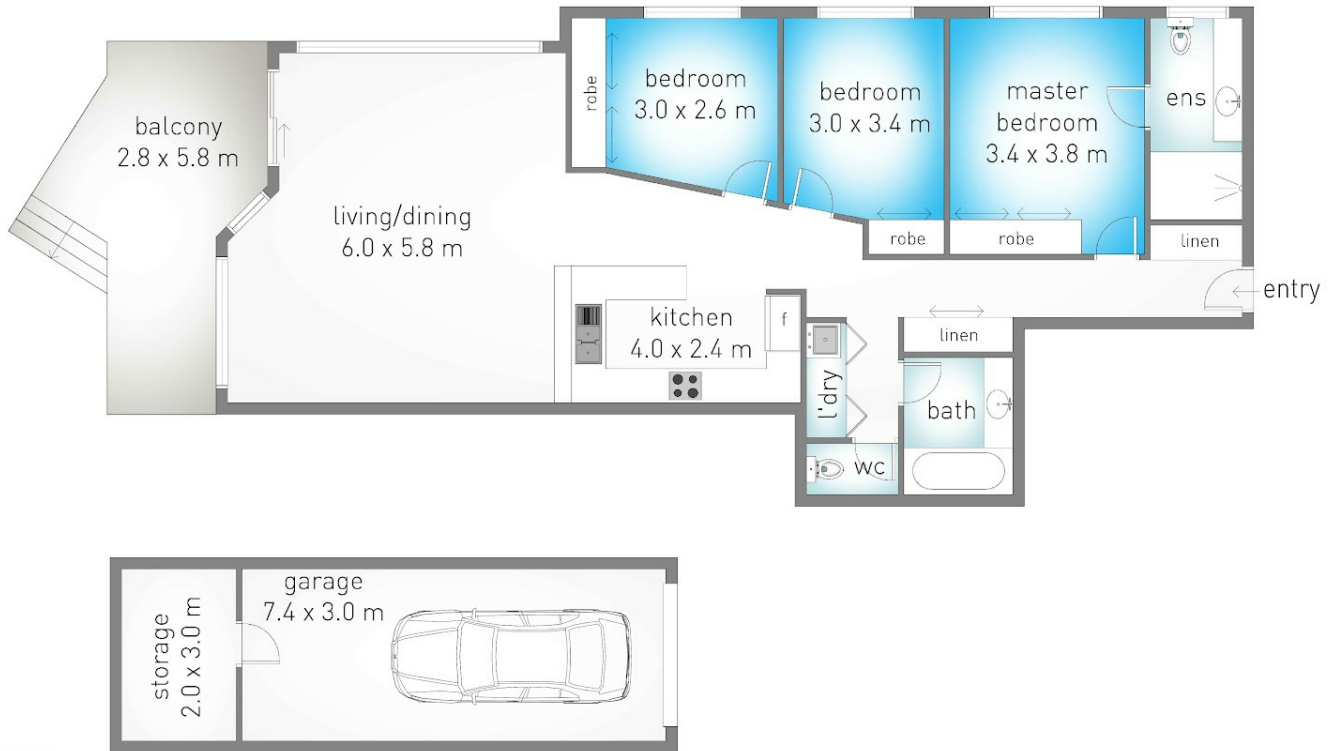
1/52 Pacific Parade, Bilinga

MICHELLE TOPPER
REAL ESTATE
0400 362 639



3 2 1

internal: 123 m² | external: 17 m² | garage: 28 m² | total: 168 m²



Dimensions are approximate. All information contained herein is gathered from sources we believe to be reliable. However we cannot guarantee its accuracy and interested persons should rely on their own enquiries.

Disclaimer: Please note this floor plan is for marketing purposes and is to be used as a guide only. All dimensions are estimates only and may not be exact measurements.

Michelle Topper
0400362639
michelle.topper@atrealty.com.au
www.atrealty.com.au

