



**SOLD**

## COMFORTABLE LARGE FAMILY HOME ON 1,887SQM. GREAT INVESTING FOR YOUR FUTURE.

This immaculate Five bedroom residence is impressive with its clean appearance and layout. Well presented, the home is bright, airy and offers spacious open plan living. Offering the astute buyer the opportunity to call this Grand property home, or an equally valuable addition to any investment portfolio. Exceptional value at an incredible price point & Land 1,887sqm with Room for a Second Dwelling.

This extensive home also consists of Two Spacious & comfortable living spaces, Massive Rumpus, Bar or Pool table area, Study & In-ground Pool Area

Features:

- LAND 1,887sqm WITH ENOUGH ROOM FOR A SECOND DWELLING.
- Beautiful Double Storey Solid Brick Home
- Five good size bedrooms with built-ins and ceiling fans
- Two comfortable living area's with plenty of room to move
- Two spacious Bathrooms, One on each level
- Open plan living D/S opening onto the pool area
- Big In-ground Pool with Water Tank with new Pump
- Large Office / Study or 6th Bedroom D/S
- Expansive Entertaining room with separate laundry room D/S
- Solar power (5 kw Inverter) with 16 panels
- Security doors & screens
- Quiet cul-de-sac street
- New Colourbond Fencing
- NBN ready
- Centrally & closely Located to all Amenities
- Walking distance to the recently completed Town Square Redbank Plains Town Square, with Coles, Aldi, Target, in addition to 60 plus unique stores & the New Pig 'N' Whistle Hotel
- 10mins to Springfield Central CBD comprising of major Health facilities, Shopping, University, Recreation and Rail
- Easy access to arterial roads providing connectivity to Ipswich and Brisbane

Whether you are looking for a low maintenance investment, first home, upsizing or simply want

**5 BED | 2 BATH | 1 CAR**

**PRICE:**  
\$465,000

**OPEN FOR INSPECTION:**  
N/A

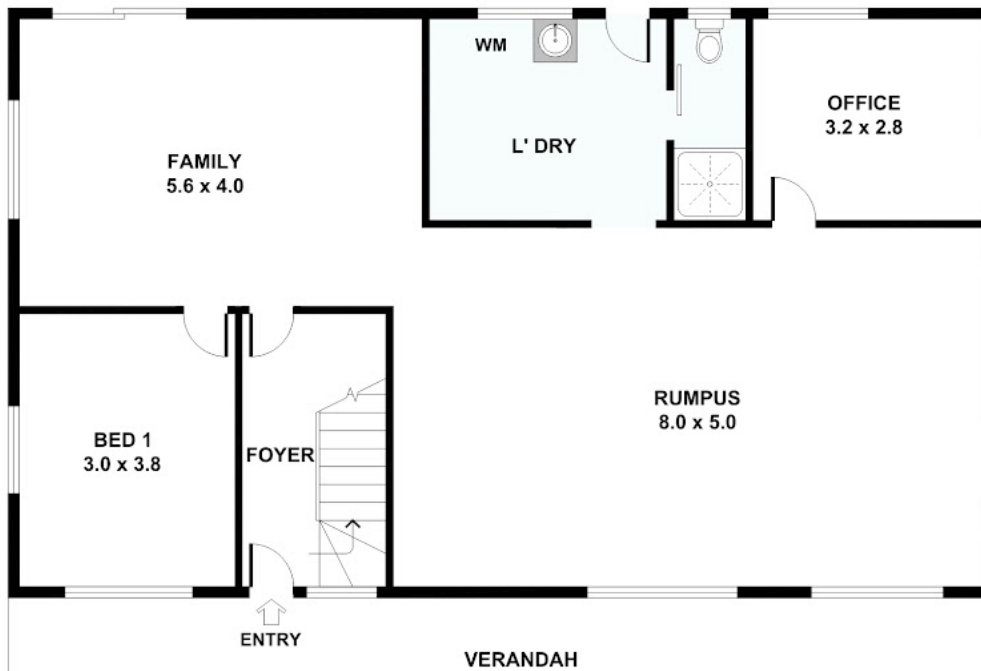


**Ryan Wilmott**  
**0410744315**  
ryanwilmott@atrealty.com.au  
[www.atrealty.com.au](http://www.atrealty.com.au)

# 14 Glen Eagle Court, Redbank Plains



FIRST FLOOR



Disclaimer: Please note this floor plan is for marketing purposes and is to be used as a guide only. All dimensions are estimates only and may not be exact measurements.