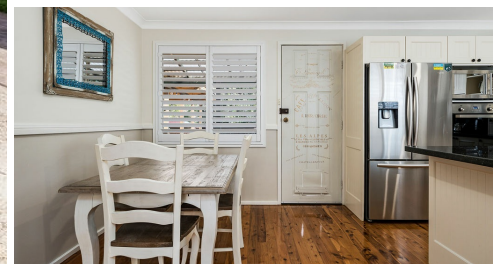


9 DOWLING STREET, LEUMEAH, NSW, 2560



SOLD

WORK HARD, PLAY HARD

This abode is uniquely set up catering to those who have or want to start a small home business equipped with an office & workshop and to those who love to entertain family and friends on their days off with the expansive entertaining deck. The home's practical floorplan provides a sense of comfort with it's vibrant modern colour palette carrying you effortlessly from entry to exit. Offering quality inclusions, the homes superb setting is impressive to say the least

Features Include:

- Front porch overlooks the lush green grass & manicured gardens
- Three well proportioned bedrooms with built in robes & air conditioning units
- Spacious living room that can be isolated with the sliding doors
- Stunning modern kitchen with ample cupboard & bench space
- Pantry
- Dishwasher
- Granite bench tops
- Breakfast bar
- Dining room
- Bright & airy bathroom with bathtub
- Separate toilet
- Laundry room includes built in bench & cupboard space
- Split system air conditioning
- Polished timber floorboards
- Plantation shutters
- Expansive covered timber alfresco
- Fantastic sized backyard
- Separate office / smaller workshop with covered pergola attached
- Double lock up garage that could house three cars
- Huge workshop located at the back of the garage with it's own entry
- Side access
- 556sqm block

This wonderful opportunity is conveniently located in the family friendly suburb of Leumeah, it's location is enviable due to how close everything is. You are spoilt for choice when it comes to shopping with the popular shopping destinations at Macarthur square, Campbelltown Mall & Campbelltown Marketfair all being only a 10 minute drive. The local Leumeah Village shopping

3 BED | 1 BATH | 2 CAR

PRICE:
\$720,000

OPEN FOR INSPECTION:
N/A



Huss Al Salemi
0411699419
huss@atrealty.com.au
www.agencycentral.com.au

