



SOLD

ANOTHER SOLD BY GEOFF TUTT

Do you want to live in a home featuring beautiful high ceilings overlooking lovely water views? Then you must see this great 390 sqm four-bedroom, three-bathroom, two garage home positioned on a North facing 778 sqm block with 22.3 metre canal frontage. There are 250 metres of unrestricted canal views into Tasman Cove and the property is within walking distance to the Pacific Harbour Golf Course. The ideal situation.

This great home features open plan kitchen/dining and separate lounge room. The master bedroom is king-size and features an en-suite bathroom and walk-in robe. Two of the bedrooms including the master are located on the ground floor with two spacious bedrooms located on the top floor with walk-in robes and a jack and jill bathroom.

The living area looks out over the large outdoor covered living area, a great place to relax after a hard day's work or fishing and to entertain family and friends. Lots of room for the children to play in the large back yard. Look at these additional features:

- Ducted computer-controlled air conditioning system – 380-volt power connection
- 5.9 kw solar power
- Slabset termite prevention system
- 11 x 3.5 metre pontoon with winch
- Computer controlled irrigation system with spear pump
- Drinking water filtration system
- Large 60.4 sqm garage - 8.24 x 7.32 metres

Don't miss out, call Geoff (your local Agent) on 0414 230 130 to arrange your private inspection now.

4 BED | 3 BATH | 2 CAR

PRICE:
\$1,180,000

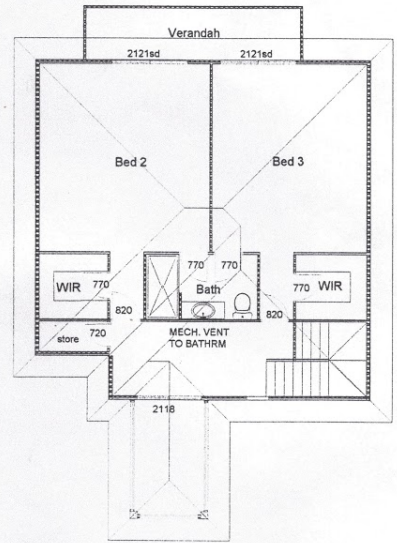
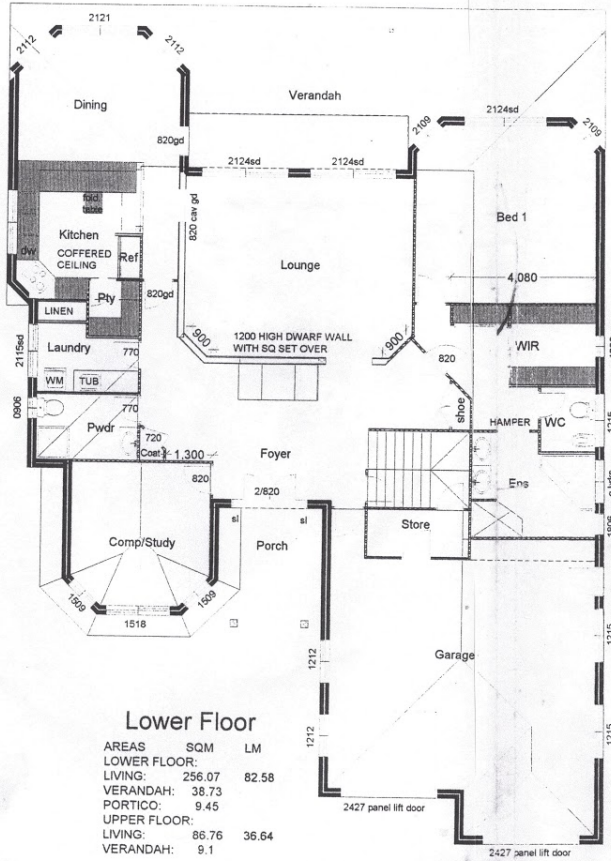
OPEN FOR INSPECTION:
N/A



Geoff and Rose Tutt
0414230130
geoff@atrealty.com.au
www.atrealty.com.au

LANGMERE

Design Sketch



© COPYRIGHT

Disclaimer: Please note this floor plan is for marketing purposes and is to be used as a guide only. All dimensions are estimates only and may not be exact measurements.