

**SOLD**

## 5 ACRES OF PRIVACY AND VIEWS

Goodbye city life and hello country haven!

Hidden from the outside world and just 10 minutes from Sorell, this picturesque acreage enjoys complete privacy and the most breath-taking views you will ever find.

Set on 2.2 ha of gentle undulating land, there is plenty of room to run a few horses, sheep or just enjoy the space and openness around you.

A large two bay plus garage offers secure parking for vehicles plus room for all your projects. Just off the driveway, an existing level cut-out would be the ideal place to build a workshop or park heavy vehicles. Alternatively, if you horsey, this area would make a great space for a round yard, stable and tack up area for your equine friends.

Filled with character and personality, the residence features open living, high ceilings and warm timber tones.

Set on a raised hearth, the wood heater exudes a country cosy ambience. There's also a split system air-conditioner for all year comfort.

Bedroom two and three are on the main level of the home, both with built in robes. A walk in shower creates the sense of spaciousness to the modern bathroom. Upstairs is the master bedroom which incorporates a private sitting area, walk-in robe and ensuite. Day or night the view up here is amazing, directly looking out over to Midway Point, Cambridge, Mt Wellington and beyond!

The rear courtyard is ideal for entertaining in the warmer and colder months. An existing container could easily be converted into an indoor bar, whilst there is already an outdoor bar ready to go. All you need is a fire pit and your friends!

If you have been thinking of escaping to the country for a while then this is your chance. Acreage properties so close to Sorell are hard to find. Act now to avoid disappointment.

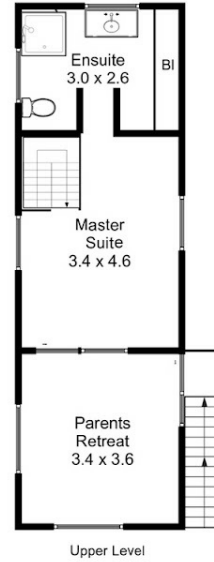
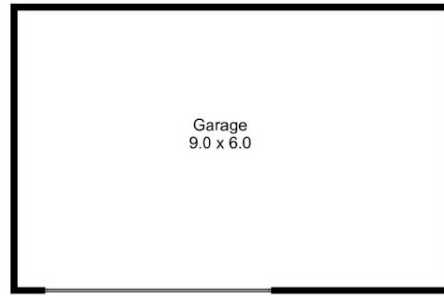
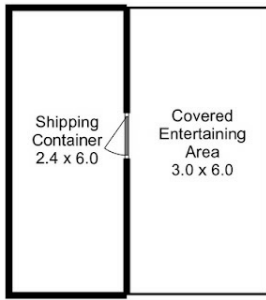
**3 BED | 2 BATH | 2 CAR**

**PRICE:**  
\$688,000

**OPEN FOR INSPECTION:**  
N/A



**Nikki Moller**  
**0408924765**  
nikkimoller@atrealty.com.au  
[www.atrealty.com.au](http://www.atrealty.com.au)



Total Approx. Floor Area : 134 sqm  
Total Approx. Outbuilding Area : 68 sqm

All measurements are internal and approximate.  
This plan is a sketch for illustration, not valuation.  
Produced by Open2view.com

Disclaimer: Please note this floor plan is for marketing purposes and is to be used as a guide only. All dimensions are estimates only and may not be exact measurements.