



SOLD

STUNNING VIEWS - ONE HOME OR TWO APARTMENTS - YOU DECIDE!

Zomay Avenue in Dynmyrne is a hidden Gem, as is this rarely available opportunity at No. 28 Zomay Avenue.

Featuring stunning views spanning 280 degrees from Lower Sandy Bay, across the River Derwent to its upper reaches and across to Mount Wellington in the West, You will be endlessly spellbound by the ever changing vista before your eyes.

The upper level of the home features level access to the front door and internally accessed garage, Master bedroom, 2nd bedroom or study, Kitchen, Lounge and Dining rooms all taking in the most of the views with double glazed floor to ceiling windows and doors, opening out onto the large deck taking in further views across Hobart and the River Derwent.

The mid and lower levels of the home feature an additional Lounge, Kitchen and Dining room, Queen size bedroom, second bathroom and another private deck offering further views from this lower level.

The landscaped gardens offer a private haven with level lawn and paved fountain feature, with the property perimeter fully fenced and secure.

This home has the flexibility to be a 3 bedroom, 2 bathroom, 2 kitchen family home or 2 bedroom home on the upper level, and one bedroom home on the lower level with its own external access. The short term accomodation market such as AirBnB could make this property a treasure chest of opportunity.

At a glance:

- 2 kitchens
- 3 bedrooms
- 2 bathrooms
- 3 Water closets
- 3 reverse cycle heat pumps (air-con)
- internally accessed garage
- level access to upper level

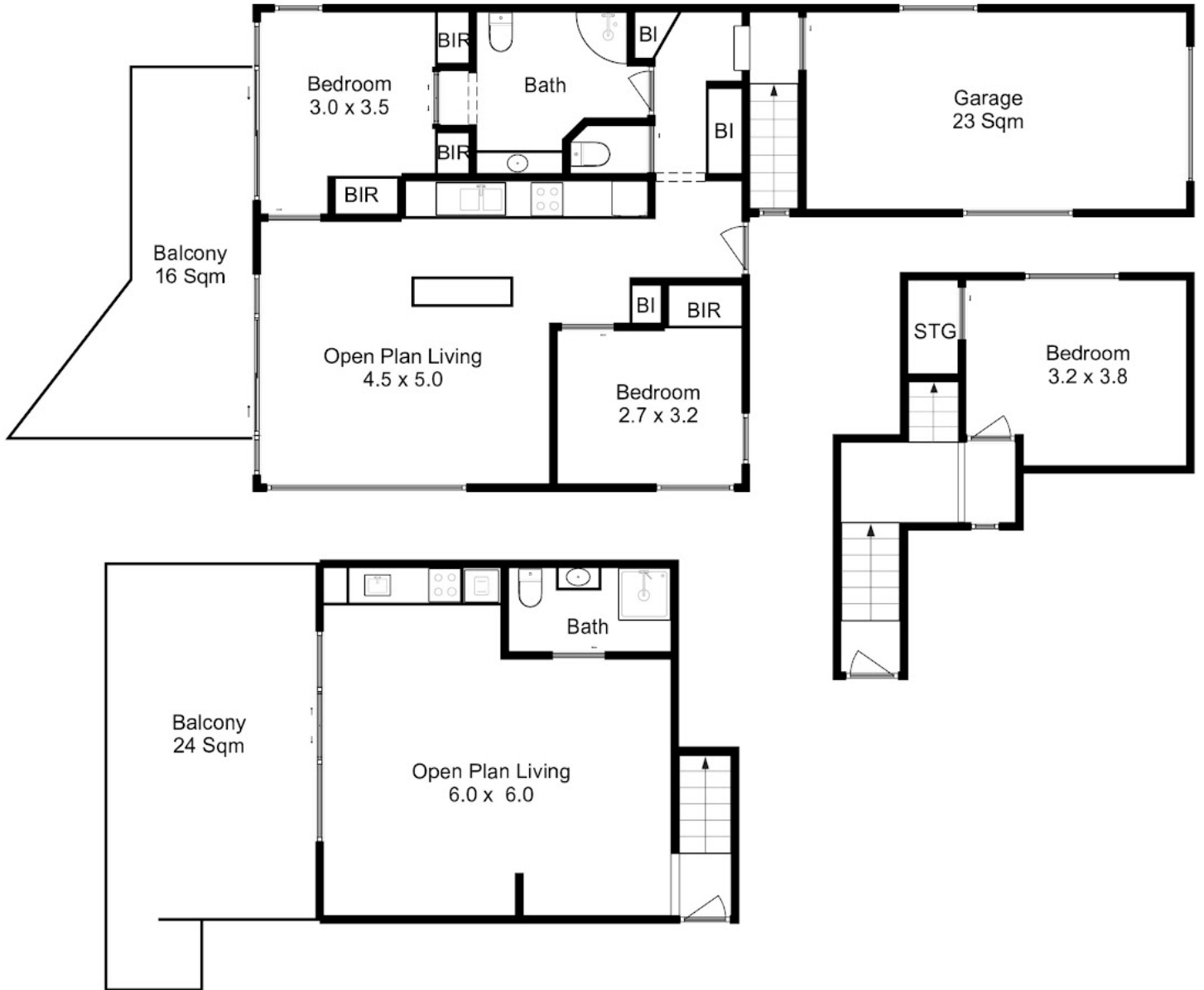
3 BED | 2 BATH | 1 CAR

PRICE:
\$977,500

OPEN FOR INSPECTION:
N/A



Ben Palmer
0417556731
benpalmer@atrealty.com.au
hobarthomes.com.au



Please Note : This floor plan is for marketing purposes and is to be used as a guide.
Produced by Promote Property Marketing



Disclaimer: Please note this floor plan is for marketing purposes and is to be used as a guide only. All dimensions are estimates only and may not be exact measurements.