



SOLD

CHARACTER & ELEGANCE IN A RURAL SETTING!

Situated on one of the Mid North Coast most picturesque valleys tucked away on a quiet country street in Hannam Vale is this eight year old home.

Relaxed family living and sensational entertaining is taken to a whole new level of comfort and convenience in this gorgeous, young character home. With plenty of space and versatility for couples or families and offering exceptional peace and privacy in a country rural setting, this is a home the entire family will love and enjoy.

Set on a 1.1 hectare (approx. 2.71 Acre) and designed to take in the rural landscape, this free-flowing haven encompasses multiple living spaces and functional indoor/outdoor entertaining. Open plan living flows out to two north facing covered decks, overlooking the rear yard with plenty of space for kids, pets and perhaps even a small hobby farm.

- Luxury kitchen with Caesarstone benches and breakfast bar, dishwasher, electric oven and cooktop and double door pantry
- Family room includes combustion fireplace, reverse cycle air conditioning and enticing views of the rear landscape.
- Master suite with sliding door access to back deck, walk-in robe and ensuite
- Second bedroom with built-ins, ceiling fan and easy access to master bedroom
- Third bedroom can be used as a bedroom or study with double entry doors, ceiling fan and built ins
- Modern family bathroom with shower and bath
- Internal laundry with built in storage cupboard
- Garaging includes a large colour bond machinery shed with a carport, shower and toilet, and is completely detached from the home.
- Lush lawns and landscaped gardens that have been selectively planted with ornamental trees and scrubs.

Approx 20 minute drive to Woolworths at Lakewood (near Kew), 30 minutes to Laurieton and only 40 minutes drive to Port Macquarie.

Call Jenny Magill on 0490 403 051 or Jason Magill on 0429 606 006 to arrange an private

3 BED | 2 BATH | 5 CAR

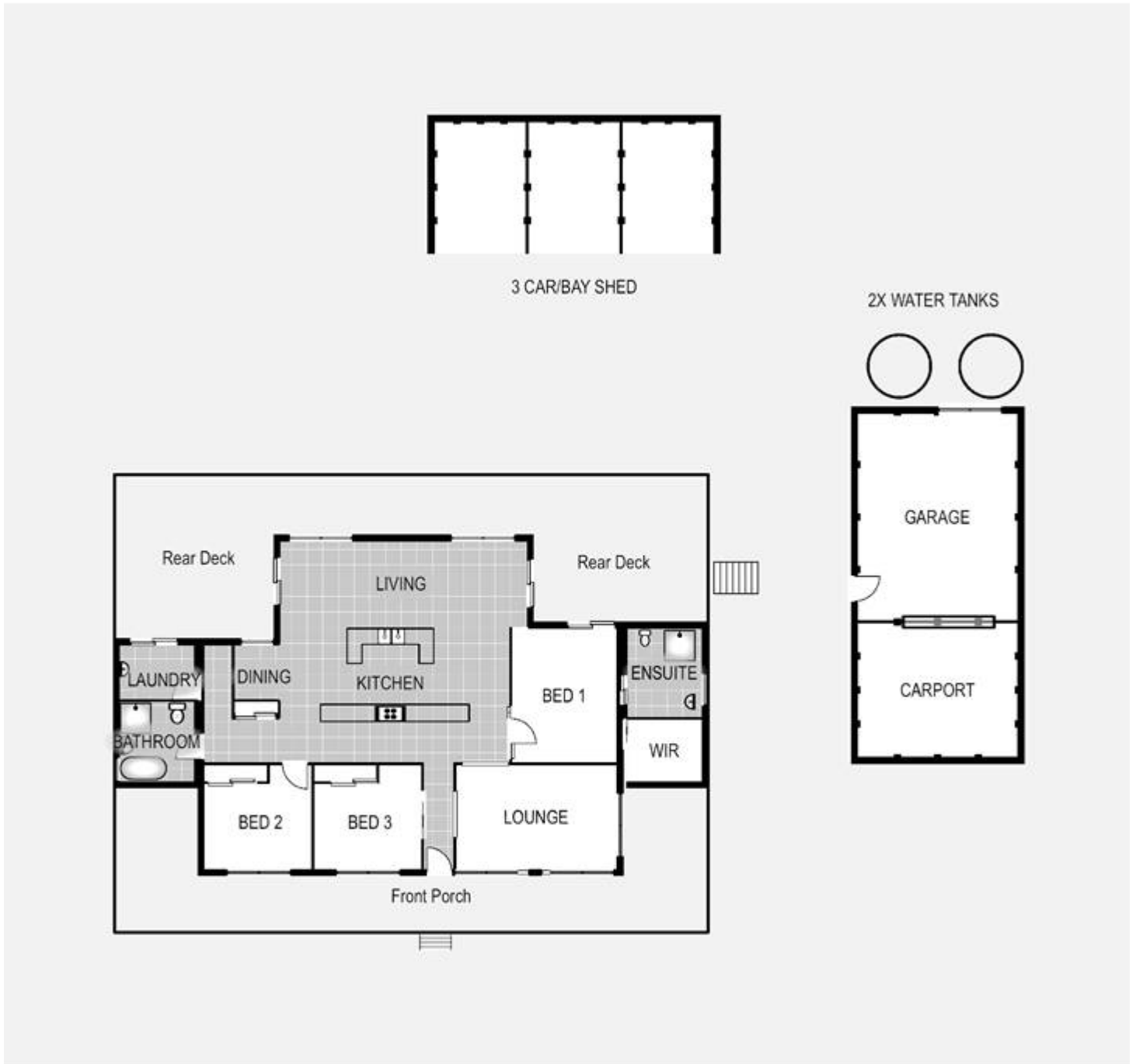
PRICE:
\$912,500

OPEN FOR INSPECTION:
N/A



Jenny - OLD Magill
0490403052

jennymagill@atrealty.com.au
jennymagill.com.au



Floorplan

Disclaimer: Whilst every effort has been made to ensure the accuracy of these particulars, no warranty is given by the vendor or the agent as to their accuracy. Interested parties

Disclaimer: Please note this floor plan is for marketing purposes and is to be used as a guide only. All dimensions are estimates only and may not be exact measurements.