



SOLD

STUNNING FAMILY HOME

Location location location, Located in arguably the best position in the estate with a nature strip across the road this home oozes warm and will immediately make you feel at home.

Most of the hard work has been done with new flooring and carpets as the cherry on the cake. Sitting on an elevated position overlooking the beautiful green space as your neighbors across, one word describes the balcony Peace. What about the back deck, the perfect place for a morning coffee in summer and sun downers in winter you have privacy as well as astoundingly quiet area.

This contemporary home offers so much for families with the opportunity to work from home.

Upper Level:

Light Bright and Breezy.

Balcony is flooded with morning sun.

Back Deck - at 6x 3 M its an entertainers delight

Large useable lawn (brand new turf) for kids/4 legged family members

Open plan Kitchen/Dining with large lounge defined by the stairwell to entrance.

Master Bedroom with walk-in robe (new lighting as well as built-in mirrors and assessor storage plus the en-suite.

Brand new funky and functional laundry

Family Bathroom

An extra 2 good size bedrooms with Built-ins

New flooring and carpets throughout (except wet area's)

Lower Level:

Huge 4th bedroom with 2 double built-ins, which would suit the teenager retreat/guest accommodation or work from home

Lots of under stair storage

Double internal access garage

The nature strip across the road leads down to huge off leash dog play area as well as a kiddies playground. The location on the street means that not only do you get the best views, but also the lowest amount of passing traffic making this a truly peaceful family home.

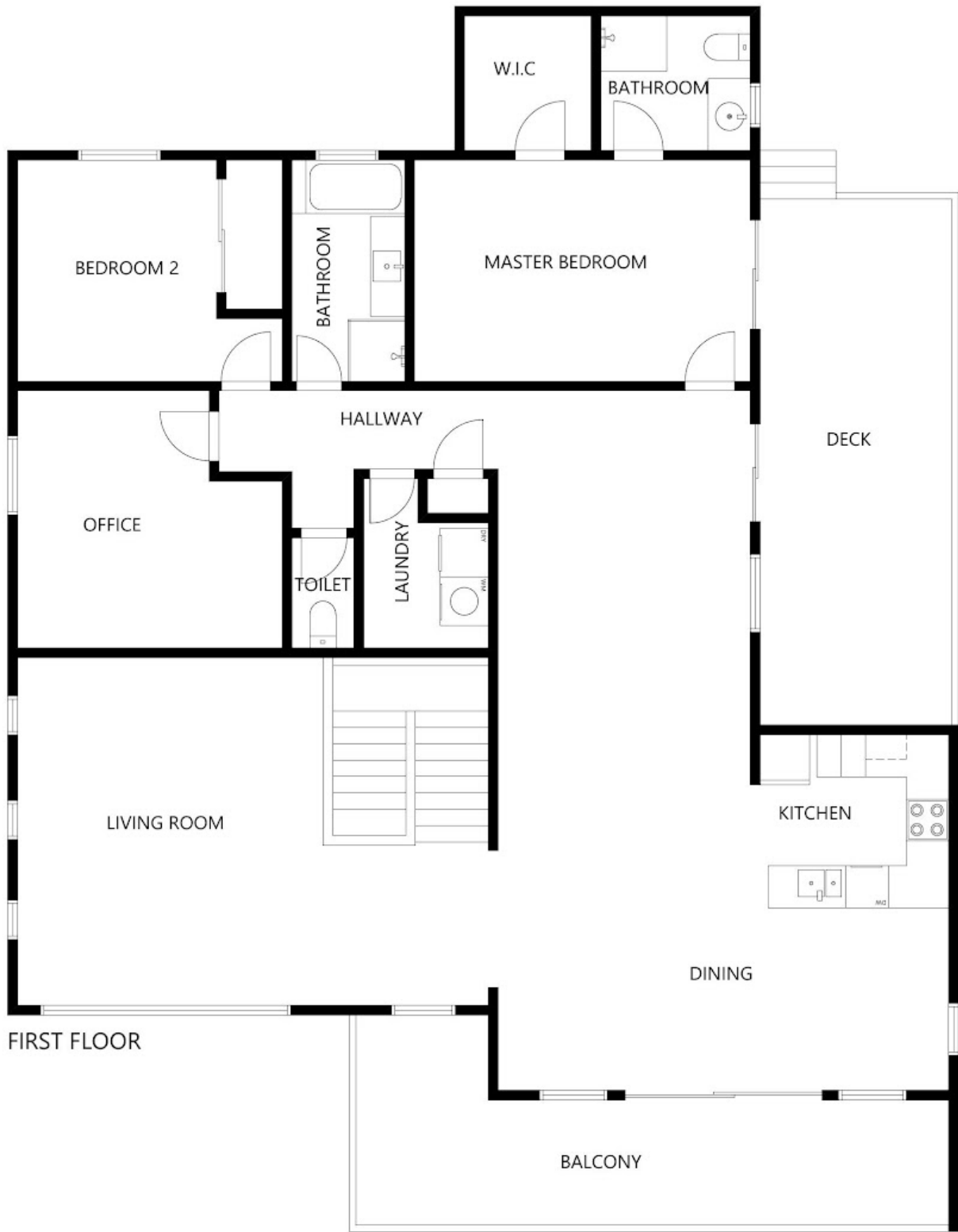
4 BED | 2 BATH | 2 CAR

PRICE:
\$865,000

OPEN FOR INSPECTION:
N/A



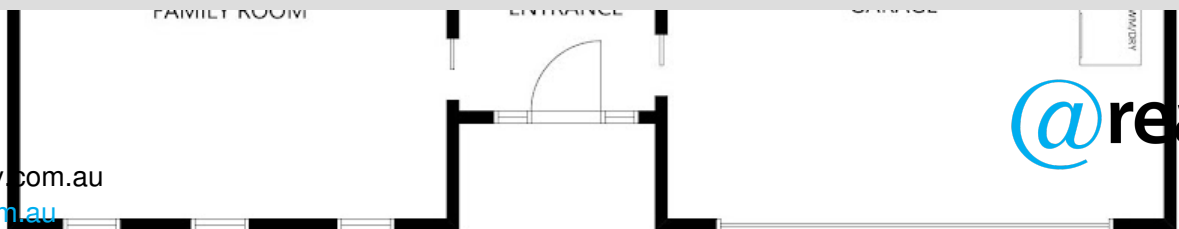
Kelli Powell
0429918571
kelli.pa@atrealty.com.au
www.atrealty.com.au



FIRST FLOOR



Disclaimer: Please note this floor plan is for marketing purposes and is to be used as a guide only. All dimensions are estimates only and may not be exact measurements.



GROUND FLOOR

Kelli Powell
 0429918571
 kelli.pa@atrealty.com.au
 www.atrealty.com.au



FLOOR PLAN IS PROVIDED AS INDICATIVE LAYOUT ONLY. MEASUREMENTS ARE NOT AVAILABLE, FLOORPLAN IS NOT TO SCALE.
NO GUARANTEES PROVIDED ON ACCURACY