



SOLD

BOUTIQUE APARTMENT - 200M TO KIRRA BEACH

Just a stone's throw to the crystal waters and white sandy beach of Kirra, is this elegantly designed 3 years young spacious apartment. The apartment was carefully designed throughout to capture light and the tree line views from the living / dining areas, balcony, and the master bedroom.

A fantastic investment or live in this boutique apartment and experience the coastal lifestyle only Kirra can offer, the choice is yours.

Features Include:

- Spacious 82sqm apartment plus car space. The developer designed the apartment as a 1 bedroom with a very spacious study and the owner has changed the study to the 2nd bedroom.
 - Air-conditioned light filled living and dining area.
 - The design of this kitchen is complemented with the full height crisp white and grey tone 2pk kitchen cupboards, pull out pantry and wide stone benchtops. The kitchen is complete with a double sink, dishwasher, and electrical appliances.
 - The spacious master bedroom has built-in wardrobes, air-conditioning and opens to the balcony.
 - The 2nd bedroom has a double door wardrobe and crisp white plantation shutters.
 - Main bathroom is designed in neutral tones, with a vanity, shower, and toilet, plus there is a separate powder room for your guests.
 - European style laundry.
 - 1 car space within the underground security car park. The body corporate has approved a storage cabinet within the car space if required.
 - Only 26 apartments in this boutique building.
 - Lift access and secure basement.
 - 200 meter flat walk to Kirra beachfront and cafes.
 - Pet friendly with Body Corp approval.
- BBQ area downstairs

Only moments from beaches, cafes, parks, shopping centres, public transport, only a short drive to the university and the Gold Coast Airport.

2 BED | 1 BATH | 1 CAR

PRICE:
\$600,000

OPEN FOR INSPECTION:
N/A



Michelle Topper
0400362639

michelle.topper@atrealty.com.au

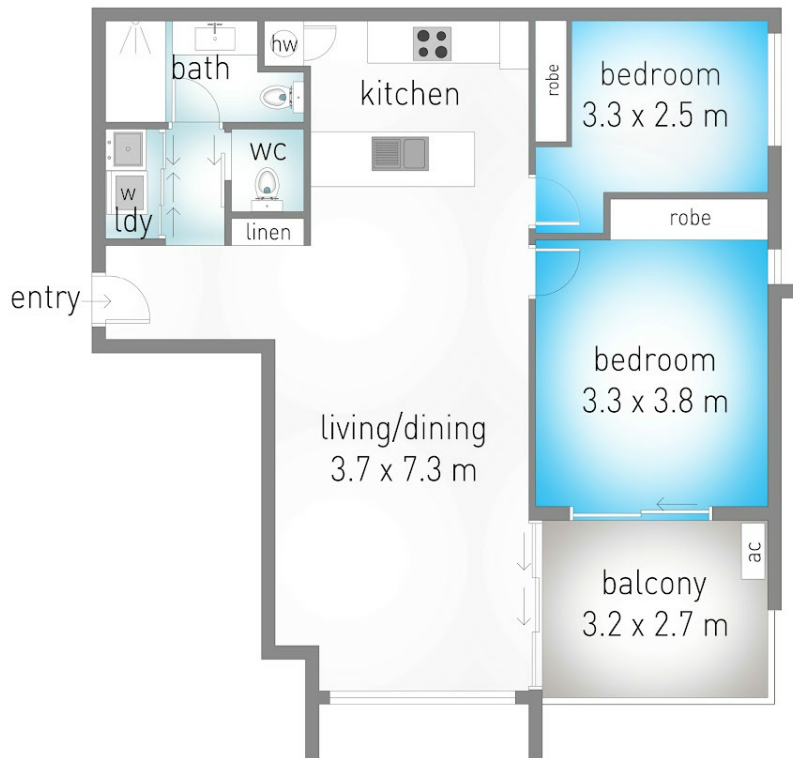
www.atrealty.com.au

305/19 Winston Street, Coolangatta

2 1 1

internal: 73 m² | external: 9 m² | total: 82 m²

MICHELLE TOPPER
REAL ESTATE
0400 362 639



Dimensions are approximate. All information contained herein is gathered from sources we believe to be reliable. However we cannot guarantee its accuracy and interested persons should rely on their own enquiries.



Disclaimer: Please note this floor plan is for marketing purposes and is to be used as a guide only. All dimensions are estimates only and may not be exact measurements.

Michelle Topper
0400362639
michelle.topper@atrealty.com.au
www.atrealty.com.au

