



**SOLD**

**STUNNING TREASURE ON A MASSIVE 849M2 BLOCK! SET ACROSS FROM THE GOLF COURSE WITH HUGE YARD + SIDE ACCESS!**

If you could dream of a picture perfect opportunity to plant the long term family flag, would it be dazzling & impeccable family home?? Would it be in a proudly set home with the utmost in commanding street presence positioned directly across from a tranquil golf course?? Would it be in a home that offered huge yard space with room for a pool or a large shed addition?? Would it be a home with double gated vehicle side access allowing for secure caravan storage?? Would it be in a home that offered an amazing wrap around deck catching fantastic breezes and with a tremendous outlook over the golf course??

Now you can make your dreams happen!!...You only live once!! The keys are waiting!!

Features include;

- \* Stunning family home that ticks every box!
- \* Fastidiously maintained and immaculately presented!
- \* Nothing left to do but move in, unpack & enjoy!
  
- \* Ultimate new lifestyle opportunity that is as rare as hen's teeth to come across
- \* Positioned with a priceless and unobstructed outlook over the tranquil North Pine Golf Course
- \* Close to a selection of natural reserves, walkways, beautiful Lake Samsonvale and Bullocky Rest
  
- \* Spacious flowing design with a plentitude of windows and access doors to the wrap around deck
- \* Amazing wrap around entertaining deck catching fantastic breezes & offering a wonderful vista over the golf course
  
- \* Proud & commanding street presence
- \* Fantastic flow, size & separation for the growing family – an absolute must to inspect!
- \* Massive 849m2 block allotment with no registered easements – the exclamation point on full sized family living!!

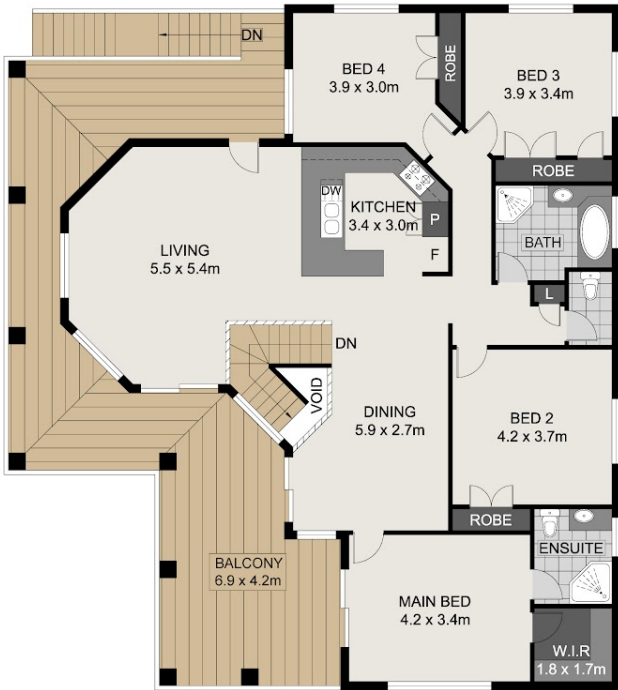
**4 BED | 2 BATH | 2 CAR**

**PRICE:**  
\$775,000

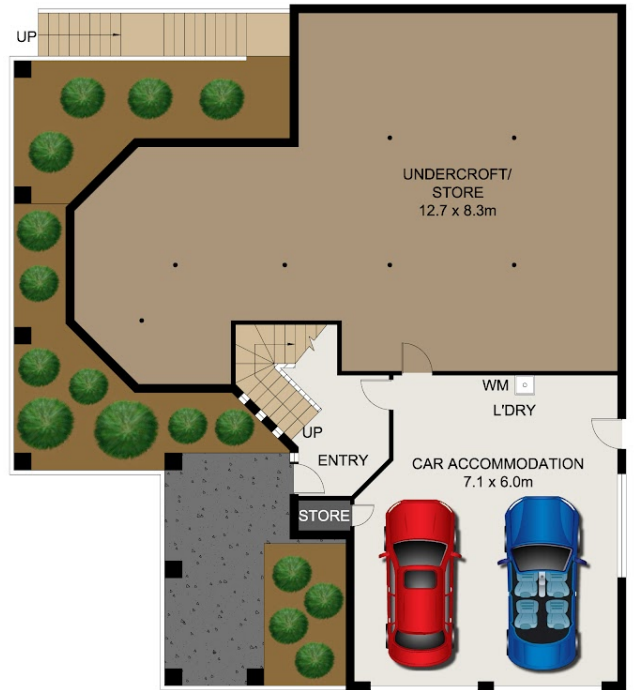
**OPEN FOR INSPECTION:**  
N/A



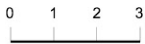
**Patrick D'Arrigo**  
**0447381869**  
pdarrigo@atrealty.com.au  
[www.atrealty.com.au](http://www.atrealty.com.au)



UPPER LEVEL



LOWER LEVEL



Scale in metres, indicative only. Dimensions are approximate. All information contained herein is gathered from sources we believe to be reliable. However, we cannot guarantee its accuracy and interested persons should rely on their own enquiries.

INT	: 232.20m <sup>2</sup>
EXT	: 114.25m <sup>2</sup>
CAR ACCOM.	: 42.04m <sup>2</sup>
TOTAL	: 388.49m <sup>2</sup>

## 16 Pine Valley Drive, Joyner

Disclaimer: Please note this floor plan is for marketing purposes and is to be used as a guide only. All dimensions are estimates only and may not be exact measurements.