

SOLD

BRAND NEW CARPET, BRAND NEW INTERIOR PAINT, JUST MOVE ON IN !

PRIVATE CORNER TOWNHOUSE POSITION !

Large corner position townhouse with balcony & side access. This is an attractive and comfortable townhouse for those seeking the perfect balance of practicality and style. As you enter this spacious townhouse the floor plan effortlessly flows with generous proportions throughout, and contrasting freshly painted white walls balance perfectly to create a unique sense of space and light with a gorgeous leafy outlook.

The open plan living and dining areas feature air conditioning, a well-designed gourmet kitchen featuring loads of cupboard and bench space, a wide breakfast bar and external window for excellent ventilation. Plus the bonus of a separate laundry and toilet downstairs.

Flowing out to the private rear fenced courtyard, the wrap around garden is the perfect place to relax and unwind and enjoy the seclusion of this tree-lined setting.

On the upper level..

Upstairs, air-conditioned master bedroom with ensuite extending out to a generous sized balcony. Also, two more good sized bedrooms & a separate well-appointed large bathroom. All bedrooms with ceiling fans and plentiful natural light. The main bathroom incorporates a full size bathtub with additional storage in the hallway.

Lifestyle is a strong focus for Moreton Domain residents that enjoy exclusive access to two in ground pools, BBQ area, plus a gym.

- Three good size bedrooms all with built ins
- Master bedroom with ensuite and walk in wardrobe
- Open plan tiled lounge, kitchen and dining
- 2 x Air-conditioning
- Large linen/storage cupboard upstairs
- Storage space under the stairs downstairs
- Fully security screened

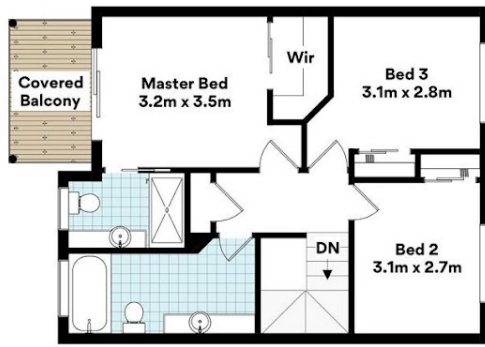
3 BED | 2 BATH | 1 CAR

PRICE:
\$330,000

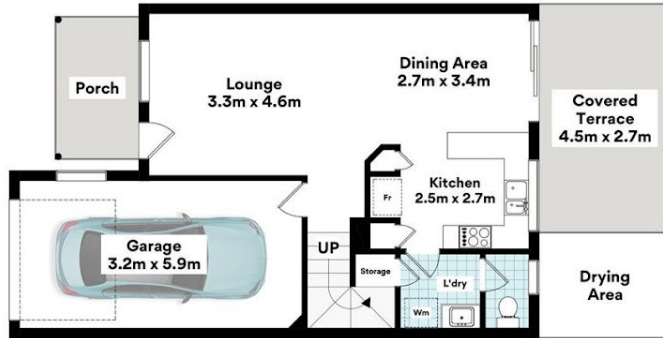
OPEN FOR INSPECTION:
N/A



Karen Moke
0406521370
karenmoke@atrealty.com.au
www.atrealty.com.au



UPPER LEVEL



LOWER LEVEL

117/350 Leitchs Road,
Brendale

FLOOR AREA SIZES

Internal 130m² | External 30m² | Total 160m²

Whilst every attempt has been made to ensure the accuracy of the floor plans contained here, measurements of doors, windows, rooms and any other items are approximate and no responsibility is taken for any error, omission or misstatement.

These plans are for representation purposes only. Provided by primepiel.com.au

Disclaimer: Please note this floor plan is for marketing purposes and is to be used as a guide only. All dimensions are estimates only and may not be exact measurements.