



SOLD

FLAWLESSLY PRESENTED FIRST HOME BUYERS & INVESTORS DREAM WITH AN ABUNDANCE OF OLD WORLD CHARM!

Only a stones throw from everything you could require, I proudly present to you this flawlessly presented & charming family gem! Offering much more than first meets the eye this is a home that is sure to impress any first home buyers, downsizers or investors looking to secure a slice of gold!

POSITION POSITION POSITION.... Only 18kms to the CBD, directly across the road from St Paul's school, a short walk to Bald Hills train station – a direct line to the CBD, close to Bracken Ridge TAFE, only a 400m drive to gateway/highway access for convenient commute to southside or the Sunny coast, only a 10min drive to either Chermside shopping complex or North Lakes shopping complex, 10min drive to both Costco & Ikea at North Lakes, only a short drive to the Westfield Shopping complex and a stones throw to the newly opened Petrie University!!!

Once through the front door you will be swept over by warmth & old world charm with flowing polished timber floors, 9ft high ceilings, gorgeous ceiling roses & ornate architraves...all putting the exclamation point on this cute & cosy family gem!

Homes as immaculately presented as this and in this price range are moving fast, so be quick and don't delay and ring for inspection times & bookings today!

Features include;

- * Charming & surprising family home
- * Flawlessly presented! A must to put at the top of your inspection list!
- * Recently freshened with nothing left to do but move in, unpack & enjoy!

- * Situated in an ultra convenient location
- * Close to Westfield shopping, gateway motorway access & direct CBD train
- * Directly across the road from highly regarded St Paul's school – nurturing little ones from prep right through to grade 12!

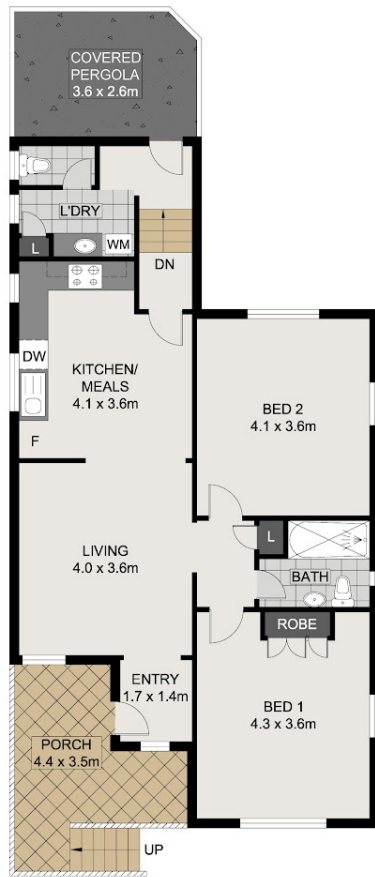
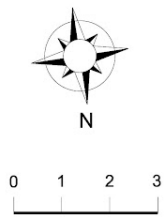
2 BED | 1 BATH | 1 CAR

PRICE:
\$510,000

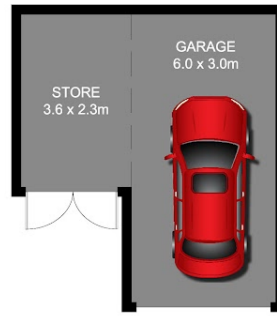
OPEN FOR INSPECTION:
N/A



Patrick D'Arrigo
0447381869
pdarrigo@atrealty.com.au
www.atrealty.com.au



*SHED NOT SHOWN IN ACTUAL POSITION



Scale in metres, indicative only. Dimensions are approximate. All information contained herein is gathered from sources we believe to be reliable. However, we cannot guarantee its accuracy and interested persons should rely on their own enquiries.

INT : 79.18m²
 EXT : 21.30m²
 GARAGE/STORE : 26.28m²
 TOTAL : 126.76m²

27 Strathpine Road, Bald Hills

Disclaimer: Please note this floor plan is for marketing purposes and is to be used as a guide only. All dimensions are estimates only and may not be exact measurements.