



SOLD

POPULAR SUBURB – CLOSE TO THE CITY – FABULOUS LOCATION

Welcome to Valley View a fabulous leafy suburb close to the city and ideally located close to all major facilities including hospitals, medical centres, public transport, major shopping centres, variety shops and schools. Also nearby to parks and reserves, par 3 golf course and driving range.

The home is on a 700 square metre allotment approximately and has lots of room for all the family, plus plenty of parking and a big back yard. All rooms are large and include 3 bedrooms all with built in robes, a very spacious formal lounge room, large kitchen/dining area with plenty of bench and cupboard space plus a family and rumpus room. The rumpus could easily be a 4th bedroom or home office.

There is a 2 way family bathroom along with an updated laundry with plenty of built in cupboards. Other features inside the home include polished timber floors, carpets, high ceilings, formal entry, large linen cupboard and reverse cycle air conditioning.

Outside you have a triple carport with roller door and a double garage, so there is plenty of undercover parking for everyone. The home is serviced by 16 solar panels to keep those power bills down and a solar hot water service.

Please see below for more features on this Spacious Family Home
Popular Suburb – Close to the City – Fabulous Location

- 3 large bedrooms - all with built in robes
- Formal lounge – kitchen/dining – family room
- Home office also perfect for a rumpus room or 4th bedroom
- Large kitchen with plenty of bench & cupboard space
- 2 way family bathroom – update laundry with built in cupboards
- Polished timber floors – carpets – high ceilings – large linen cupboard
- Triple length carport with double garage at rear – big back yard
- Solar hot water service – 16 solar panels – loads of parking
- 700sqm allotment – quiet location – popular suburb – close to the city centre
- Close to colleges – high schools – primary schools – nature reserve
- Major shopping centres – shops – par 3 golf course and driving range
- Easy access to public transport – 20 to 25 mins to the CBD

Property is currently tenanted to 29/12/2021 the date may be able to be brought forward if all parties agree...

3 BED | 1 BATH | 3 CAR

PRICE:
\$480,000

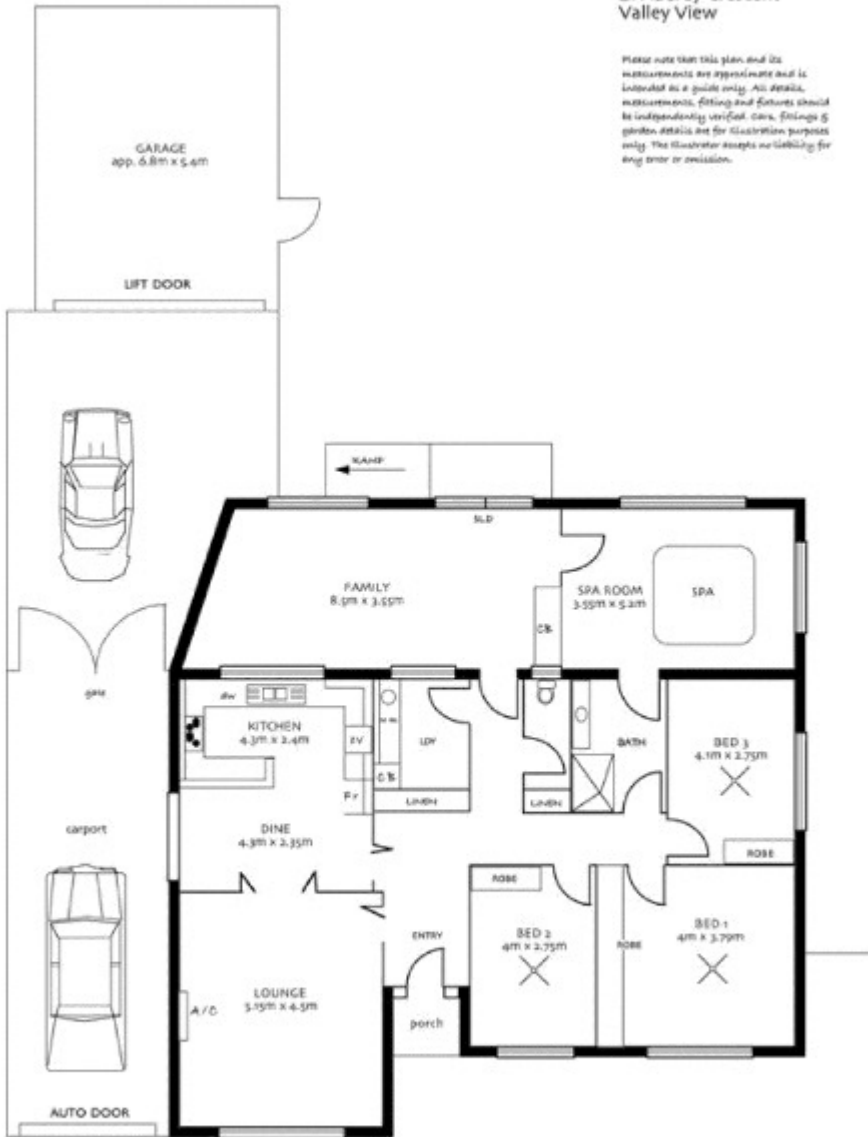
OPEN FOR INSPECTION:
N/A



Jon Downs
0412977914
jondowns@atrealty.com.au
www.atrealty.com.au
RLA: 269823

21 Audrey Crescent Valley View

Please note that this plan and its measurements are approximate and is intended as a guide only. All details, measurements, fittings and fixtures should be independently verified. Care, fittings & garden details are for illustration purposes only. The illustrator accepts no liability for any error or omission.



Disclaimer: Please note this floor plan is for marketing purposes and is to be used as a guide only. All dimensions are estimates only and may not be exact measurements.