



SOLD

LARGE DUPLEX PAIR ON SINGLE TITLE IN COOMERA RETREAT

An opportunity to secure a modern duplex pair that is tenanted and producing a healthy rental return.

Each duplex is massive in comparison to what is typical of a duplex in the area and together are situated on a generous 825M2 block making them feel more like freestanding homes with good sized back yards than duplexes.

On each side of this well laid out property you have 4 bedrooms with built in robes, master bedrooms with large en-suites & walk in robes, an open plan kitchen, lounge & dining area that flows to an under cover alfresco area for entertaining.

In addition each duplex have separate media rooms or a separate study as well as a large internal laundry leading from the kitchen that could double as a butlers pantry and provides direct access from the double garages.

Features included in each duplex are:

- Modern open plan kitchen with stone bench tops
- Internal laundry off the kitchen that could double as butlers pantry
- Open plan living and dining area with split system air conditioning
- Separate media room or separate study for those who work from home
- Main bedroom with split system air conditioning, large en-suite and walk in robe
- 3 additional good sized bedrooms all with built in robes
- Outdoor under cover alfresco area
- Enclosed backyard with space for kids to play or potentially a swimming pool
- Double lock up garage with two internal access points
- 825M2 block combined or approximately 412M2 for each duplex
- Duplexes are on one title which means only one set of rates but two incomes
- Both units are currently tenanted
- Located in the highly sought after Coomera Retreat Estate with no body corporate fees

This amazing property presents multiple options for various needs which include the opportunity to secure an income generating investment property, purchase to occupy one duplex & continue

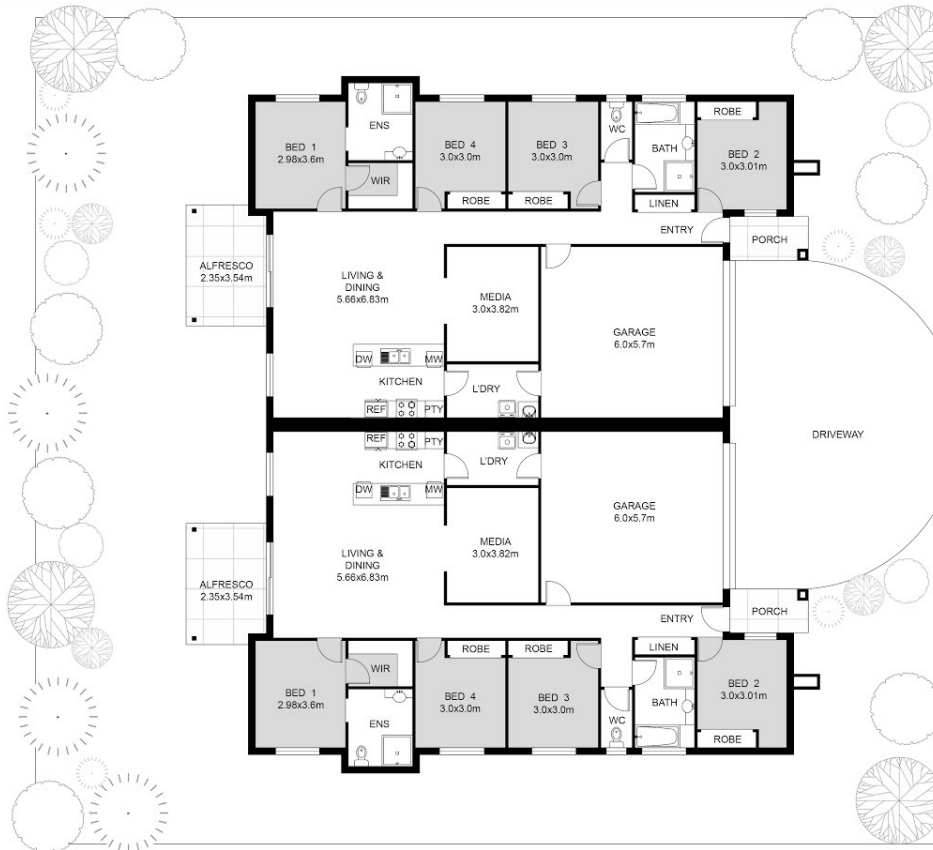
8 BED | 4 BATH | 4 CAR

PRICE:
\$1,050,000

OPEN FOR INSPECTION:
N/A



Robin Fick
0452533776
robin@atrealty.com.au
Robin Flick Real Estate



FLOOR PLAN ON SITE PLAN

This floor plan including furniture, fixture measurements and dimensions are approximate and for illustrative purposes only. BoxBrownie.com gives no guarantee, warranty or representation as to the accuracy and layout. All enquiries must be directed to the agent, vendor or party representing this floor plan.



Disclaimer: Please note this floor plan is for marketing purposes and is to be used as a guide only. All dimensions are estimates only and may not be exact measurements.