



FOR SALE

ANOTHER PROPERTY SOLD OF MARKET TO OUR DATABASE!

This stunning family haven is set in the friendly street of Penrose and encompasses family functionality with style and grace. Spread over an impressive and expansive floorplan that showcases an array of modern comforts and vibrant interiors that can be adorned at every turn. The clever use of space has been maximised to ensure your family's level of comfort is of the highest priority. The home's superb setting is complemented by it's beautiful surroundings with only a short walk to park facilities.

Features Include:

- Semi enclosed front yard with manicured lawns & gardens
- Boasting four generously proportioned bedrooms with built in robes & ceiling fans
- Master suite includes a walk in robe & an ensuite with dual basins
- Open plan expansive living & dining room
- Media Room features a Yamaha surround sound audio system with built in speakers providing you with - the ultimate cinematic experience
- Kids activity room / teenagers retreat includes a built in study nook
- Well appointed kitchen with ample cupboard & bench space
- Gas cooking
- Dishwasher
- Walk in pantry
- Breakfast bar overlooking living room
- Bright & airy main bathroom includes a bathtub & separate toilet
- Laundry includes a linen cupboard & backyard access
- Ducted air conditioning
- Ceiling fans throughout
- Plantation shutters
- Undercover alfresco with ceiling fan
- Low maintenance backyard
- Double garage with remote & internal access
- Side gates suitable to accommodate a boat, caravan or trailer
- 540sqm block

Bingara Gorge is a prestigious estate located in the semi-rural town of Wilton. Widely known for

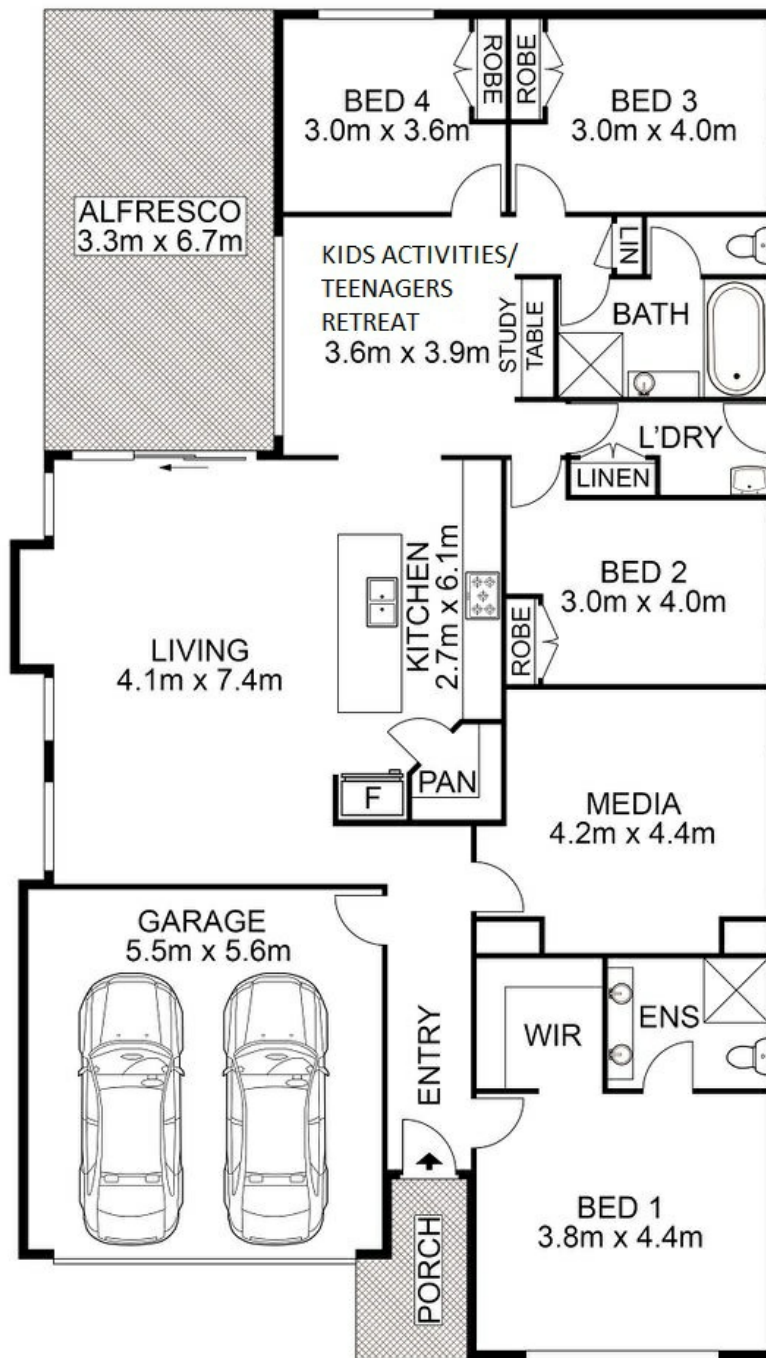
4 BED | 2 BATH | 2 CAR

PRICE:
Just Listed

OPEN FOR INSPECTION:
N/A



Bobby Reynolds
0432173566
bobby.reynolds@atrealty.com.au
agencycentralwilton.com.au



Disclaimer: Please note this floor plan is for marketing purposes and is to be used as a guide only. All dimensions are estimates only and may not be exact measurements.

8 Penrose Street, Wilton

Bobby Reynolds All measurements are approximate • Drawn for marketing purposes only
 0432173566
 bobby.reynolds@atrealty.com.au
agencycentralwilton.com.au

