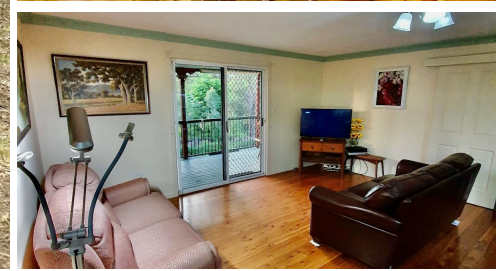
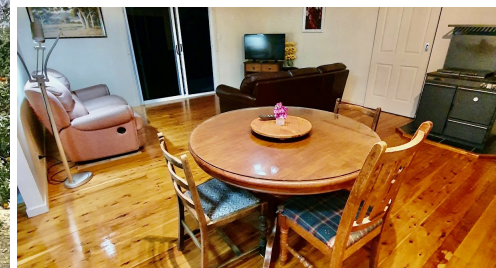


ADDRESS UPON REQUEST



**SOLD**

## BRING GRANNY TOO - DUAL LIVING AT ITS BEST - ESK - 2.2HA

Ranch style 3 bedroom home , with a granny flat adjoined by a large breezeway , great spot for entertaining.

the Main Home: Master bedroom over sized with air conditioning, two large built in robes and access to the front verandah . Open Plan kitchen and dining and a lovely large lounge room with doors to the verandah .

Large wood heating - stove / heating great for cooking in winter .

GRANNY FLAT : Sep entrance; Lounge room, bedroom, kitchen , combined laundry and bathroom and its own front verandah overlooking the Gardens.

Fully fenced dog proof house yard.

Large double carport at the homes.

Just to the rear of the dog proof yard, you will find

SHED: 1 bay enclosed with glass door and airconditioned - great for home office/ gym/ craft room

2 bay roller door lockable with power , 2 bay open higher than normal

BORE WATER : fantastic bore water

Solar system back to grid : 2.5kw

Very Private with established gardens, chook runs etc.

**4 BED | 2 BATH | 6 CAR**

**PRICE:**  
\$617,500

**OPEN FOR INSPECTION:**  
N/A



**Lyn Sills**  
**0402500825**  
lynsills@atrealty.com.au  
[eskrealestate.com.au](http://eskrealestate.com.au)