

# SOLD

## SUPERIOR 2 BEDROOM NORTH-EAST HAVEN

Rising above Broadbeach's premier shopping and dining precinct, this highly sought-after North-East facing apartment is drenched in natural light all day taking in stunning views of the pristine ocean, vibrant city, and ambient hinterland.

The large open plan of this fully self-contained 133sqm apartment appeals to holiday-makers and permanent residents alike making this an ideal investment or relaxing place to call home.

### Apartment Features:

- Gourmet Miele appliances
- Stone benchtops
- Ducted air conditioning
- Quality modern finishes
- Ocean, city and hinterland views
- North-East aspect
- Two large bedrooms
- Breakfast bar
- Sweeping curved balcony

### Building Features:

- Pet friendly building
- Swimming pool
- Spa
- Resident's lounge with wine locker
- Club lounge
- Theatre
- Zen gardens with Teppanyaki BBQ's
- Communal herb garden
- Fully equip gym with steam room and sauna
- Secure underground car parking

The Oracle, known as Peppers Broadbeach, offers a chic and exclusive haven for those seeking luxury, sophistication and relaxation. Favourably positioned just minutes from the Gold Coast Convention Centre, The Star Casino, G-link light rail, Pacific Fair major shopping precinct, Oasis Shopping precinct, Broadbeach's premier dining precinct and across the road from the beautiful golden beach.

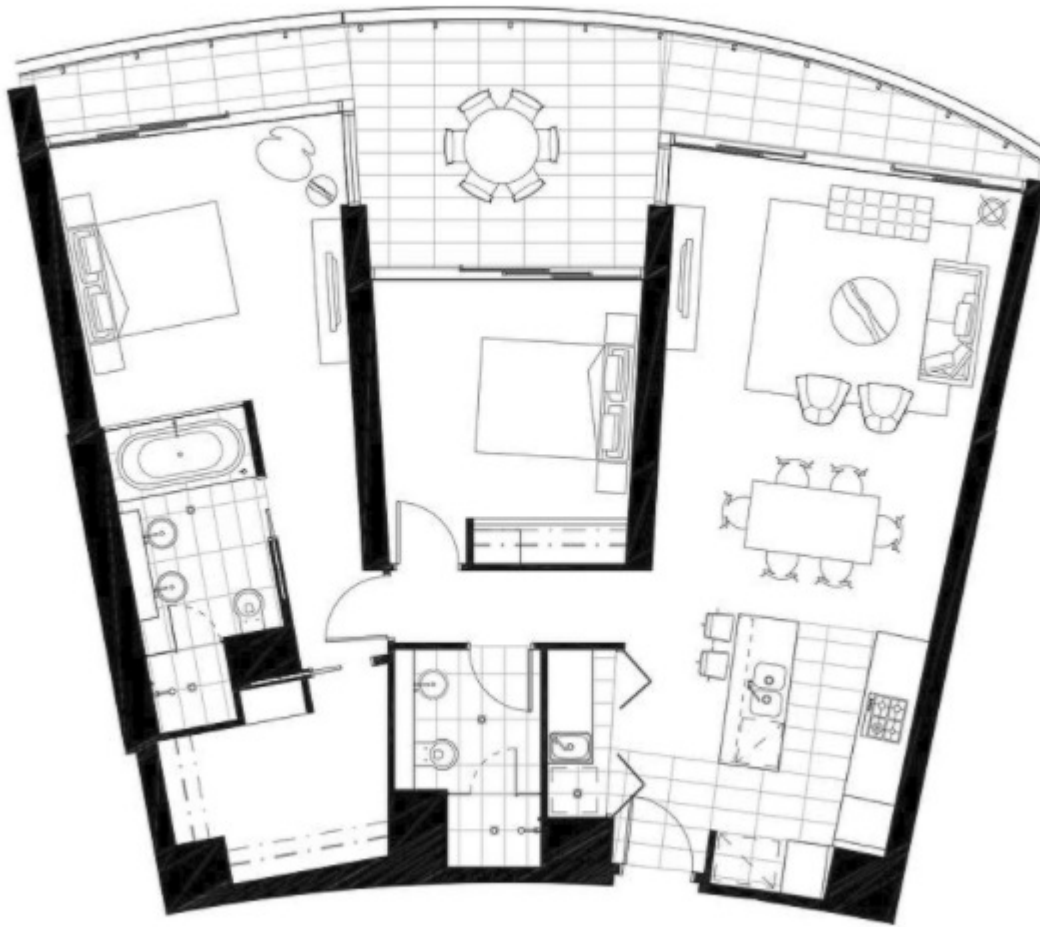
2 BED | 2 BATH | 1 CAR

PRICE:  
\$990,000

OPEN FOR INSPECTION:  
N/A



**Rebecca Shipman**  
0411348835  
rebecca@atrealty.com.au  
[www.atrealty.com.au](http://www.atrealty.com.au)



Disclaimer: Please note this floor plan is for marketing purposes and is to be used as a guide only. All dimensions are estimates only and may not be exact measurements.