



SOLD

DUAL LIVING, CHARACTER FILLED TROPICAL HIDEAWAY

Set at the foot of the Majestic Mt Ninderry just 10 minutes from fabulous Coolum Beach this tropical oasis is hidden down a private tree-lined drive way at the end of a very quiet Cul De Sac. This little piece of paradise is in an incredibly tightly held part of the Sunshine Coast. The location allows easy everyday access to the beaches and the country, village of Yandina, the Sunshine Coast International Airport, the Bruce Highway and an array of incredible National Parks and walking trails.

Set in mature tropical gardens on a very gently sloping block with absolute privacy from neighbours is this bright, breezy and airy home. The interiors have a perfect mix of a coastal vibe with a dash of country charm, offering beautiful high ceilings through out and very spacious kitchen, living and entertaining areas.

Upstairs features the main living and kitchen areas, a stunning outdoor entertaining space to take in the sunsets and a light filled Master suite with its own ensuite and WIR. There are 2 further bedrooms on the same level with great storage and fans perfect for the kids. Verandahs wrap all the way around the top level with beautiful views on offer from every direction to the Hinterland or into the surrounding gardens.

Head down to the lower level via an internal stair case and you will find a very well planned and spacious second living area with two further bedrooms and a flexible room which with just a little TLC would become the perfect little kitchen making the lower level fully self contained.

The double lock up garage is currently set up as a very spacious Commercial Kitchen with Separate Office and Toilet Room however this has been done in such a way that the space can very easily be converted back into a DLUG or Rumpus with the original roller doors still in place. If you have a business to operate from home, this is the perfect space to do so with easy access for clients, plumbing and gas in place.

Car Accomodation is taken care of on the upper level of the property with a Double Carport close to the front entrance.

The land is use able with a great flat terrace just outside in front of the house perfect for a pool with plenty of room left over for your dream shed.

Theres no need to stress about running out of water here with 4 rain water tanks and a dam on offer.

If you have been waiting for the perfect acreage hideaway in a great area at an affordable price then don't hesitate to contact me today.

Features:

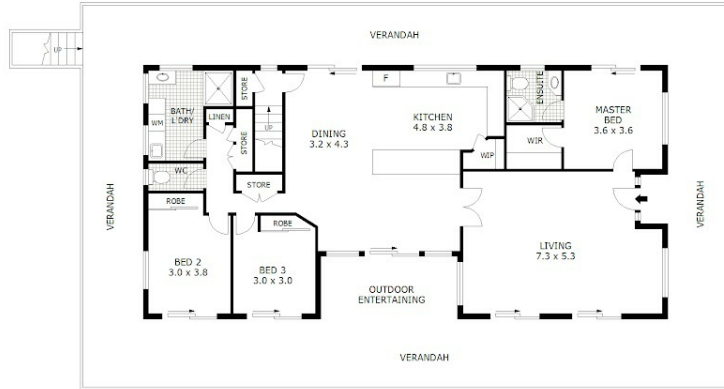
5 BED | 3 BATH | 2 CAR

PRICE:
\$1,050,000

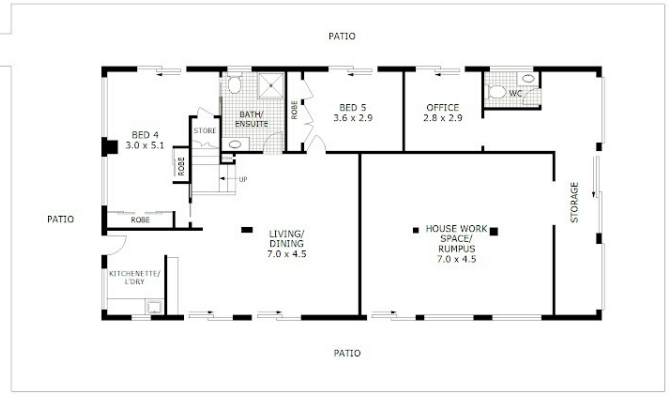
OPEN FOR INSPECTION:
N/A



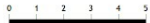
Tracy Fishburn
0449141349
tracy@atrealty.com.au
www.atrealty.com.au



UPPER LEVEL



LOWER LEVEL



Scale in metres. Indicative only. Dimensions are approximate. All information contained herein is gathered from sources we believe to be reliable. However we cannot guarantee its accuracy and interested parties should rely on their own enquiries.

Lower Level	- 159 m ²
Upper Level	- 153 m ²
Patio	- 169 m ²
Verandah	- 154 m ²
Entertaining	- 12 m ²
Total	- 647 m ²



16 Misty Court, Yandina

Disclaimer: Please note this floor plan is for marketing purposes and is to be used as a guide only. All dimensions are estimates only and may not be exact measurements.