



SOLD

PERFECT FAMILY HOME, READY TO MOVE INTO RIGHT AWAY!

Follow this link for the property video on YouTube - <https://youtu.be/NP7kJaUVld0>

Remember to follow us on Facebook for more - www.facebook.com/babetbrothersrealestate

Look no further, you've just finally found your perfect family home! This established home is ready to move into and is only 2 years old. Save yourself the hassle of building and simply pack your things and move straight in!

Upon entering the home you are greeted with a spacious entry hall, on your right you have the master bedroom which features a large ensuite and walk in robe. To your left you have the rumpus room/large study. The entry hall then opens up to the open plan living area and stunning kitchen which features quality stainless steel appliances such as a 900ml oven and range top.

The home features \$50,000 of extras over and above standard! It includes high ceilings, ducted heating, split system air conditioning, gas fireplace, butlers pantry with garage access, an abundance of built in storage, soft close kitchen draws/cupboards, outdoor alfresco area, outdoor shed & large landscaped gardens.

This large property is perfectly positioned and only meters from the park where the kids can safely play. Located in the popular Waterford Rise Estate and close to all the amenities and services of Warragul's CBD and enjoying excellent freeway access, this beautiful home is a must see!

Don't miss out, contact us to avoid disappointment.

Information in advertisement provided by vendor.

Remember to follow us on facebook for more - www.facebook.com/babetbrothersrealestate

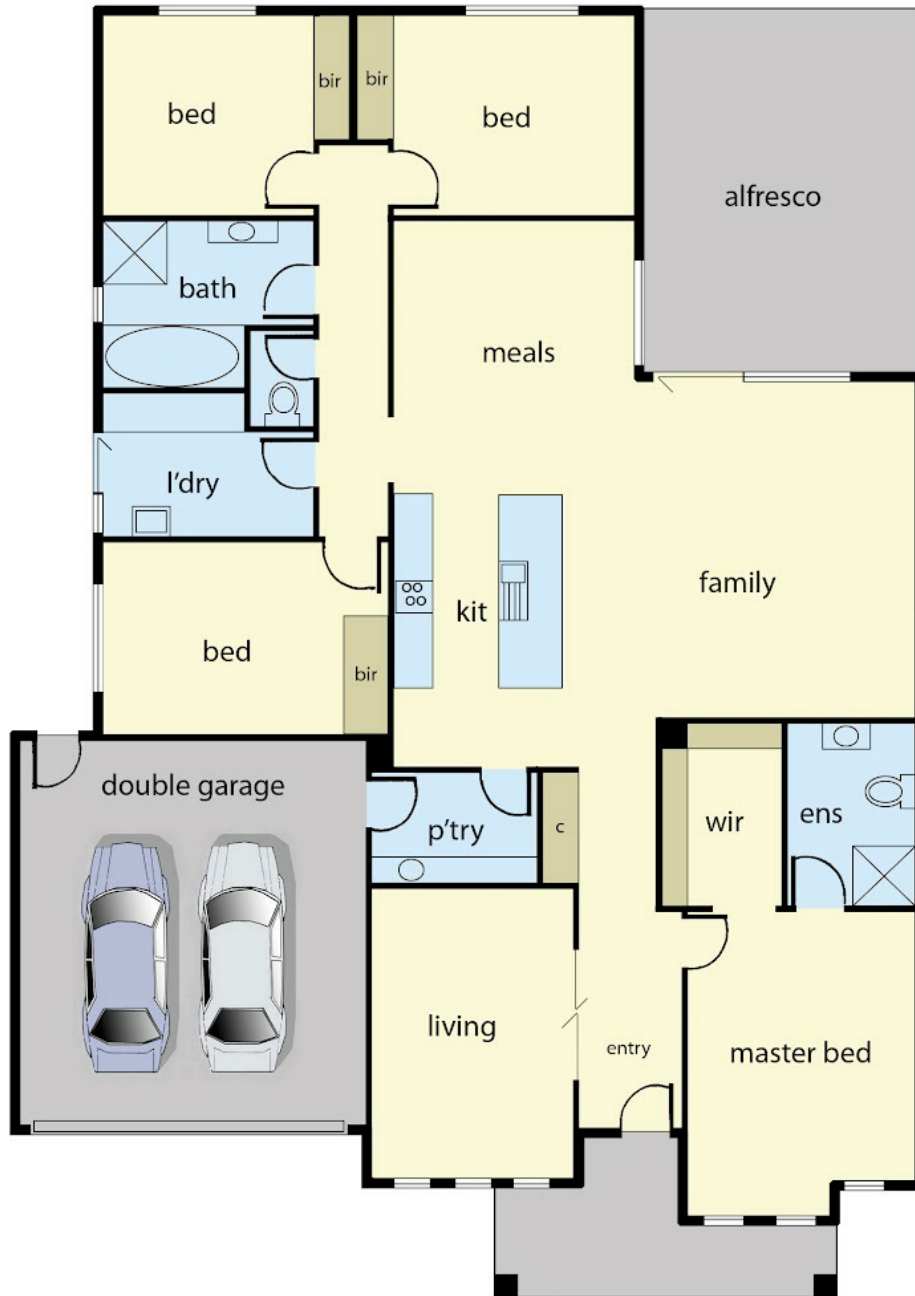
4 BED | 2 BATH | 2 CAR

PRICE:
\$530,000

OPEN FOR INSPECTION:
N/A



Matt Babet
0401861185
mattbabet@atrealty.com.au
www.atrealty.com.au



Disclaimer: Please note this floor plan is for marketing purposes and is to be used as a guide only. All dimensions are estimates only and may not be exact measurements.

26 Silverwood Drive, Warragul

Produced by DND Floor Plans.

Matt Babet
 0401861185
 mattbabet@atrealty.com.au
www.atrealty.com.au



This floor plan is for illustration purposes only and no warranty is given to its accuracy. Purchasers are advised to carry out their own investigations.