



SOLD

SOLD IN 5 DAYS BY ZOE WICKS

Situated on the fringe of popular Edge Hill, this fresh 2-bedroom apartment is ideal if you have a small pet* as it offers a fully fenced front courtyard plus rear courtyard extending from the patio. A tropical welcoming entrance with convenient adjoining lock-up garage. Offering two good sized bedrooms with built in wardrobes, plush new carpet; and two bathrooms with bathtubs. Immaculately presented with fresh paint throughout, natural light, open plan design lounge/dining, tiled living areas, internal laundry, security screens, split system air conditioners and fans throughout. A tidy, quiet complex with swimming pool. Conveniently located only minutes to shops, schools, and the Edge Hill Café and cultural precinct.

ROI 9% aprox pa
Current market rental appraisal \$380-\$400 per week aprox
Body Corporate Fees \$3,133 aprox pa
Council Rates \$2,600 aprox pa

*Subject to Body Corporate Approval

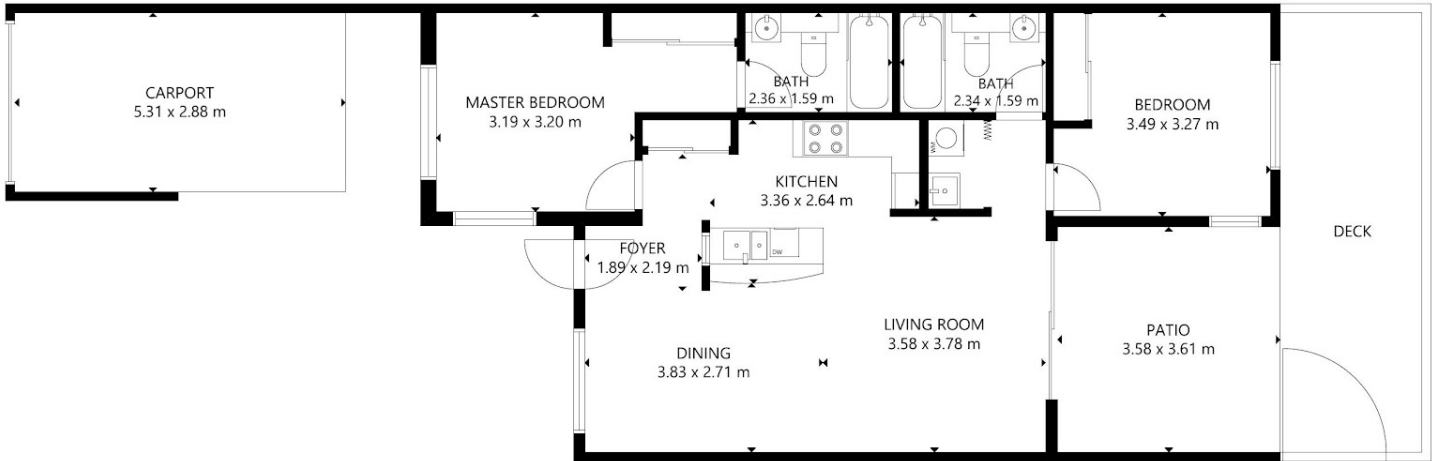
2 BED | 2 BATH | 1 CAR

PRICE:
\$215,000

OPEN FOR INSPECTION:
N/A



Zoe Wicks
0477114778
zoewicks@atrealty.com.au
www.atrealty.com.au



FLOOR 1

GROSS INTERNAL AREA
 TOTAL: 72 m²
 FLOOR 1: 72 m²
 EXCLUDED AREA: CARPORT: 15 m², PATIO: 13 m²
 SIZE AND DIMENSIONS ARE APPROXIMATE, ACTUAL MAY VARY.

Zoe Wicks | @realty
 Real Estate

Disclaimer: Please note this floor plan is for marketing purposes and is to be used as a guide only. All dimensions are estimates only and may not be exact measurements.

Zoe Wicks
 0477114778
 zoewicks@atrealty.com.au
 www.atrealty.com.au

