



SOLD

NEAT AS A PIN !

Immaculate property within the catchment for Pimpama State Schools and on a 375m2 block this excellent home will be highly sought after.

Generous size four bedroom home with open plan living, kitchen with stone bench tops, stainless steel appliances and plenty of storage space. A practical and well designed floor plan allows for a seamless flow between bedrooms, living spaces and to the outdoor undercover area.

Features:

- :: 4 large bedrooms
 - :: Master bedroom featuring a walk-in robe & ensuite
 - :: Large Media/Kids room
 - :: Centrally positioned kitchen with large serving area
 - :: Open plan spacious lounge, dining and living area
 - :: 2 Split system air conditioners and ceiling fans throughout
 - :: 2 car remote garage with internal access
 - :: Outdoor patio
 - :: Large laundry with storage
 - :: Ample 375m2 allotment
 - :: Plenty of space for a pool or shed
 - :: Parks, shops, schools and public transport an easy walk away
- :: This Property is presently leased for \$435 pw. on a short term lease, fine for Owner Occupiers

4 BED | 2 BATH | 2 CAR

PRICE:
\$550,000

OPEN FOR INSPECTION:
N/A

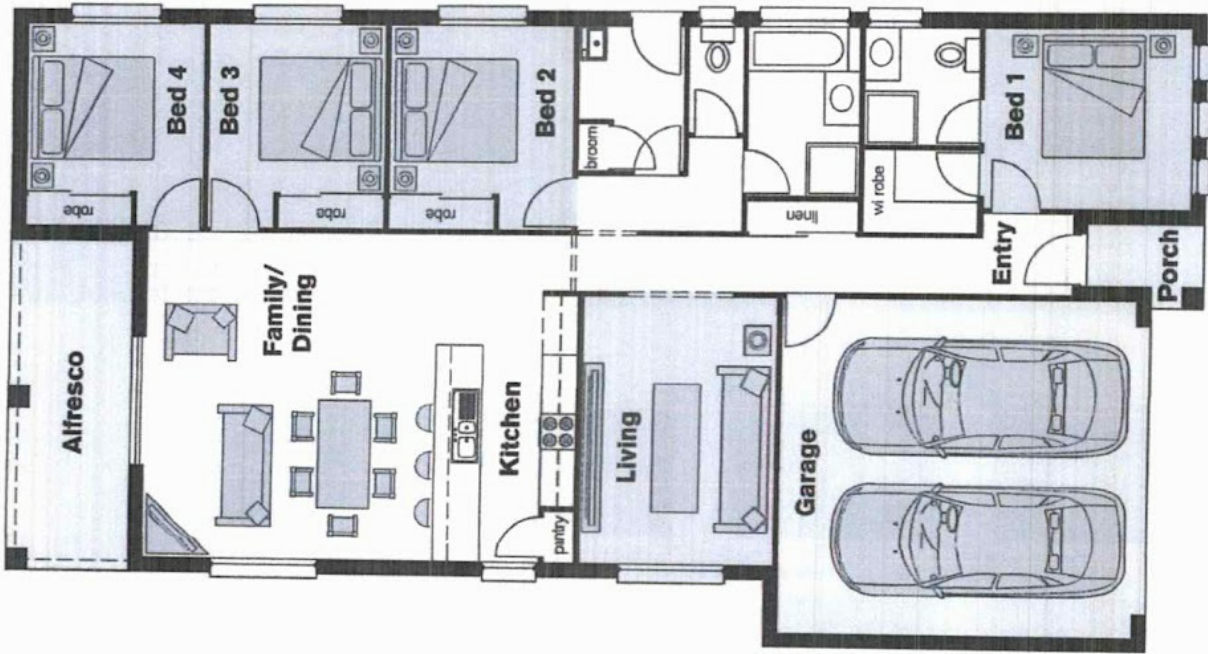


Paul Freney
0418714224
pf@atrealty.com.au
www.atrealty.com.au

Newport Mk3 Floor Plan A

4  2  2 

Floor182.0 sqm
 Porch.....2.4 sqm
 Alfresco.....11.6 sqm
TOTAL:196.0 sqm



Disclaimer: Please note this floor plan is for marketing purposes and is to be used as a guide only. All dimensions are estimates only and may not be exact measurements.