



FOR SALE

HUGE SINGLE STORY FAMILY HOME - MASSIVE 908M2 BLOCK

25 WARRIGAL CRESCENT ASHMORE QLD 4214

MOTIVATED SELLER REQUIRES MOTIVATED BUYER. DESIRABLE HOME, IN PERFECT LOCATION

Surplus to current owners needs, when they first walked in this house. They said THIS IS THE ONE.
It was purchased for their son who was studying at a local university - Now graduated, this home must be sold.

Positioned on a sprawling 908m2 allotment within a quiet elevated street and only ten minutes to the beaches of Surfers Paradise. This single level residence is perfect for the family and those who love to entertain with its two indoor living areas and magnificent front and rear undercover outdoor area's with the front overlooking the gorgeous tiled swimming pool and the rear over the spacious backyard.

- * Open plan layout with air conditioned sunken main living area boasting soaring ceilings and a separate living area for the children with both opening onto the pool area's via stacker doors
- * Large contemporary kitchen with stone bench tops; breakfast bar; SMEG free standing gas cook top and oven and glass splash backs
- * Air conditioned Master bedroom with walk in robe and modern ensuite with his and her's vanity and an oversized shower
- * Huge fourth bedroom with air conditioning, generous built in robes and a small lounge area (great for the teenagers)
- * Bedrooms three & four both have built in robes and ceiling fans
- * Fantastic second bathroom with a large bath and shower
- * Spacious backyard with plenty of room for the kids or pets
- * Large double lock up garage with built in cupboards and lots of storage space
- * Other standout features include LED lighting throughout; square set ceilings in the living areas and a 1.5KW Solar System
- * Walking distance to the Ashmore Plaza shopping centre; 8 minutes to the Gold Coast University and Hospital; 10 minutes to the beach. Located within the Benowa State High School

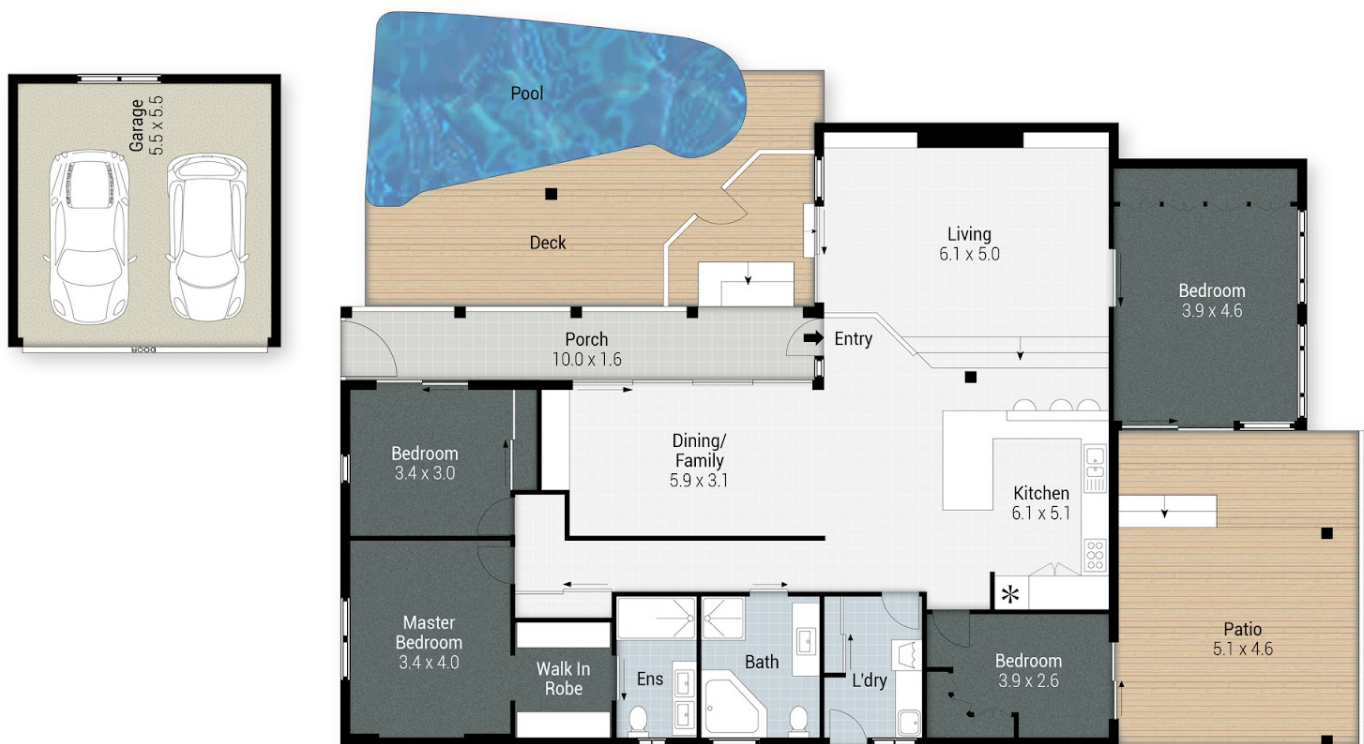
4 BED | 2 BATH | 2 CAR

PRICE:
CONTACT AGENT

OPEN FOR INSPECTION:
N/A



Agnes Chan
0421666977
agnes@atrealty.com.au
www.atrealty.com.au



25 Warrigal Crescent, Ashmore

Internal: 186m² | External: 134m² | Total: 320m²

Agnes Chan
0421 666 977

@realty

Plans shown are only indicative of layout. Dimensions are approximate.

Disclaimer: Please note this floor plan is for marketing purposes and is to be used as a guide only. All dimensions are estimates only and may not be exact measurements.

Agnes Chan
0421666977
agnes@atrealty.com.au
www.atrealty.com.au

@realty