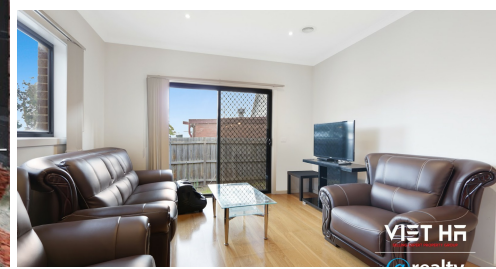
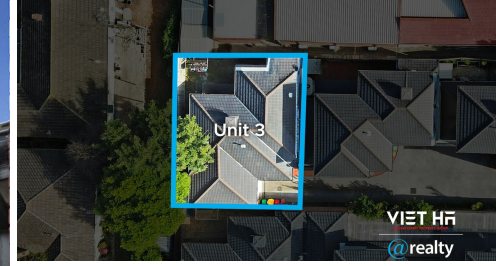


3/968 HEATHERTON ROAD, SPRINGVALE SOUTH, VIC, 3172



SOLD

SOLD SOLD SOLD \$645,000 BY VIET HA

NO ACTIVE BODY CORP

If you are looking at owning in Springvale South, attention first home buyers, down-sizers and investors, there is simply no other place more convenient, central, edgy and luxury Townhouse, Only few Years Old, this is a fantastic opportunity to grow your family or upgrade your standard of living.

The home welcomes you to a perfect open plan design combining the lounge, dining area and a spacious kitchen with stainless steel appliances, ample storage and Caesar stone bench tops. You will find all three generously sized bedrooms which feature built while all being serviced by the main bathroom and separate toilet.

Additional features include dishwasher, single garage with internal access, garden and so much more. This property will tempt first home purchasers as well as young families and investors. Move in or rent out as is with no improvements necessary! This is a great home that offers a huge amount of potential in a fast-growing suburb. Prime location close to a variety of amenities. This gorgeous residence is the ideal proposition for those seeking generously proportioned accommodation without the ongoing maintenance.

All that opens out to a private courtyard - perfect for an afternoon barbeque - low maintenance living and intelligent with landscaping and plants. With a focus on a high standard, natural light and quality features and fittings. Low maintenance living and intelligent with landscaping and plants.

Premier location and is within minutes from Springvale Shopping Centre, Homemaker Hubs including IKEA, Harvey Norman and Bunnings, Supermarkets, Monash University, Minaret College, St John Vianney's Primary, Westall Secondary, Wellington Secondary, Monash Uni, trains, buses, and major road arterials, parklands and bus and train services. You are also just moments from Springvale Shopping Centre, the Princes Highway, and the Eastlink, Dingley Bypass

Property features include:

3 BED | 2 BATH | 1 CAR

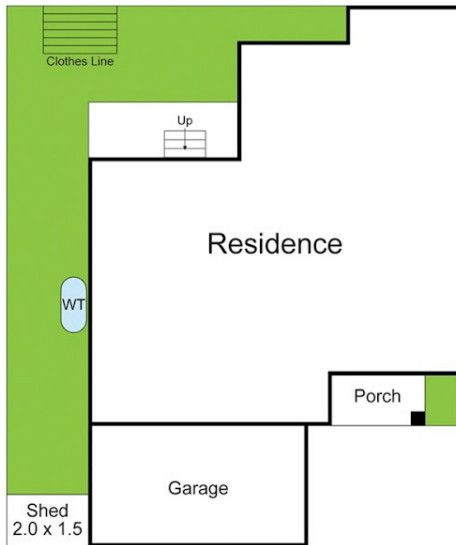
PRICE:
\$645,000

OPEN FOR INSPECTION:
N/A



Viet Ha
0406246384
viet@vietha.com.au
vietha.com.au

3/968 Heatherton Road, Springvale South



Springvale

Disclaimer: This floorplan is for illustration purposes only and no warranty is given to its accuracy. Purchasers are advised to carry out their investigations.



Disclaimer: Please note this floor plan is for marketing purposes and is to be used as a guide only. All dimensions are estimates only and may not be exact measurements.