



**SOLD**

## 3 BEDROOM AND A 2 BEDROOM DUPLEX – OVER 5.7% RETURN, WHAT AN INVESTMENT !

Located just a short drive to local shops and schools and close to local transport, this property is sure to tick all the boxes.

Tenants are already in place AND TWO incomes are always better than ONE.

This lovely property's features include,

Side 1) Renting for \$360

- 3 bedroom Duplex with built-in robes
- Main Bedroom with an en-suite and Walk-in Robe
- Ceiling fans to all bedrooms
- Modern kitchen with a dishwasher
- Open plan living with air conditioning
- A lovely covered alfresco area to relax after a long day.

Side 2) Renting for \$300

- 2 Bedroom Duplex with built-in robes
- Air conditioning
- Open plan living area and
- A cosy covered alfresco area to relax after a long day.

Be quick to Contact us or miss out on the fantastic opportunity – returning \$660 per week.  
(\$34320 gross PA)

ALL OPEN FOR INSPECTIONS times are subject to change without notice. Please register your details in advance to be notified of any changes.

Disclaimer - We make no warranty or representation as to the accuracy, reliability, suitability of the information we provide and disclaim all liability and responsibility for any direct or indirect loss or damage that may be suffered by you through placing reliance on anything contained in or omitted from the information we provide.

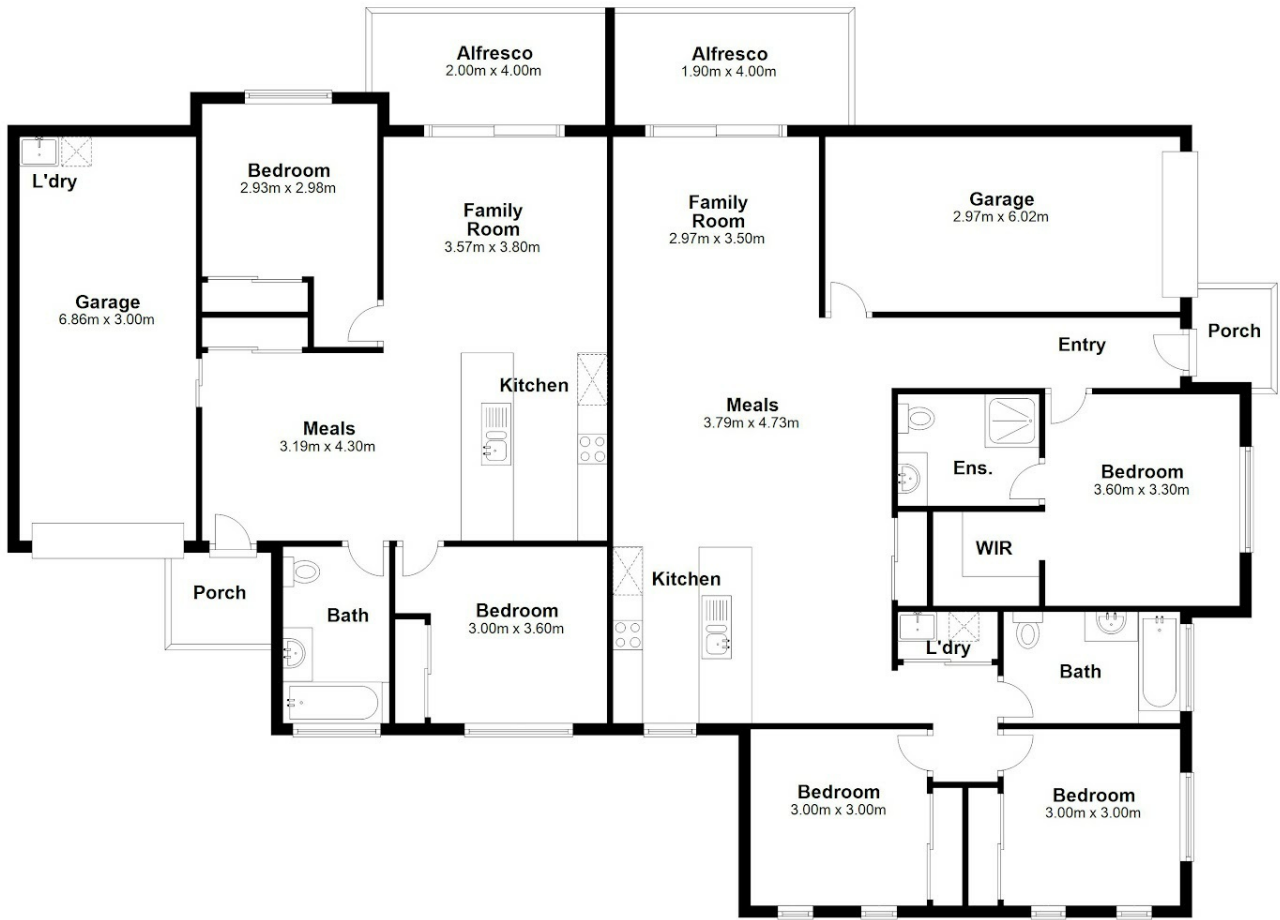
**5 BED | 3 BATH | 2 CAR**

**PRICE:**  
\$590,000

**OPEN FOR INSPECTION:**  
N/A



**Mark White**  
**0419159015**  
markwhite@atrealty.com.au  
[www.atrealty.com.au](http://www.atrealty.com.au)



**25 Alabaster Drive, Logan Reserve**

Total Area: Approx. 247.5 m<sup>2</sup>

Every attempt has been made to ensure the accuracy of these plans, however they should be used as a guide only. Prospective purchasers should make their own enquiries

Disclaimer: Please note this floor plan is for marketing purposes and is to be used as a guide only. All dimensions are estimates only and may not be exact measurements.