



SOLD

**IDEAL FIRST HOME, 3 BEDROOMS, 480 M2
BLOCK (APPROX), PLENTY OF OFF STREET
PARKING, ADJACENT OAKLANDS RAILWAY
STATION**

A beautifully updated 1950's home set on a nice sized block and in a great location close to so many facilities and lifestyle attractions.

The excellent family accommodation consists of 3 bedrooms (2 with built-in robes), separate lounge, updated kitchen, dining/sunroom and updated bathroom. Other features include striking polished timber floorboards and reverse cycle air conditioning for your year 'round comfort.

Outside features a fenced front yard with lawn and shady trees, a 'drive through' lock-up carport with extra parking to the rear (ideal for boat, trailer, caravan) and a lovely covered outdoor entertaining area to the rear of the home.

Murray Terrace is just a minute or so from the Oaklands Railway Station, walking distance to Westfield Marion and the bus exchange and within easy access to the Flinders, Brighton and Glenelg precincts.

This lovely family home represents an exciting opportunity to enter Adelaide's hot property market. Be quick!
RLA 269823

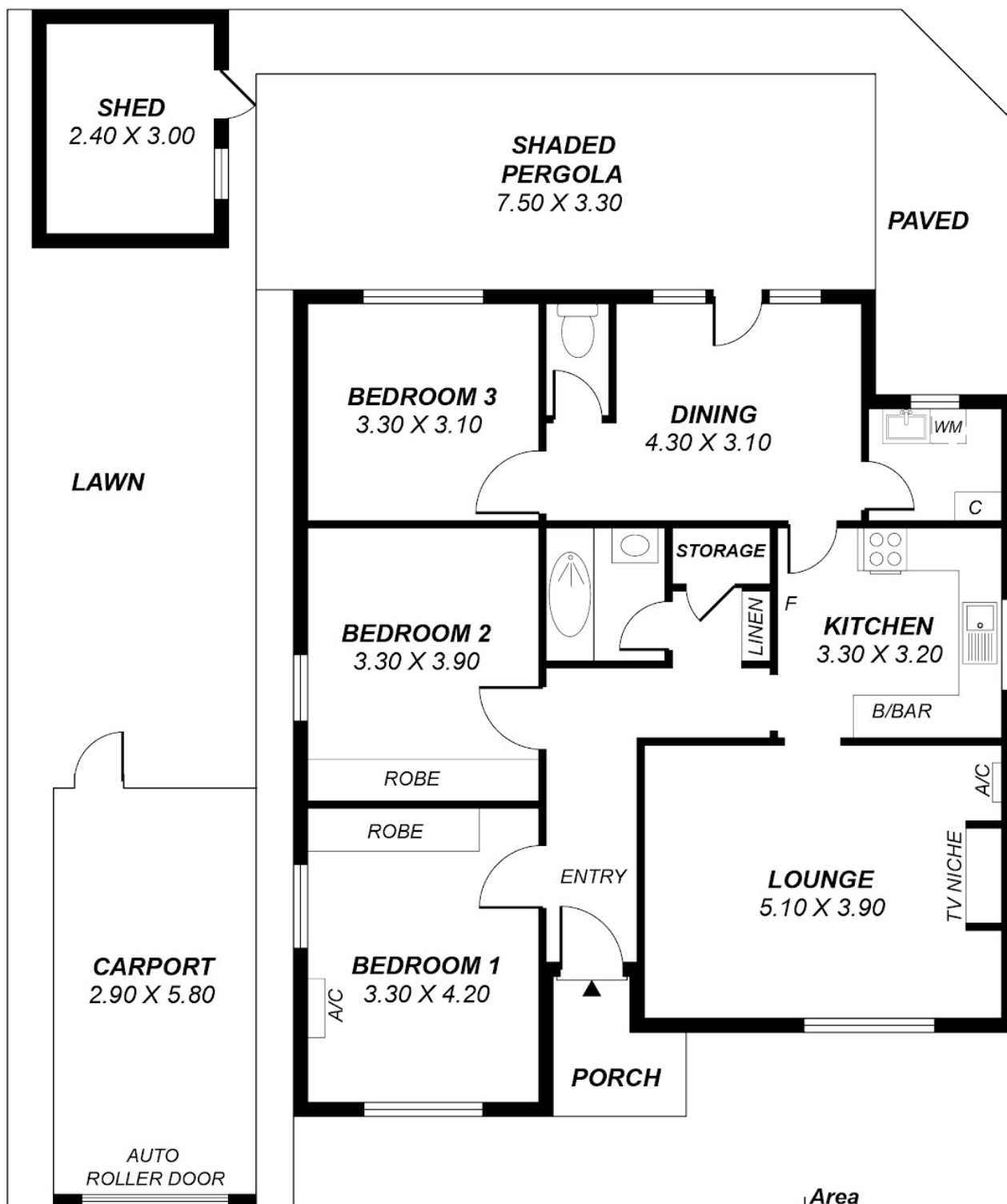
3 BED | 1 BATH | 1 CAR

PRICE:
\$525,000

OPEN FOR INSPECTION:
N/A



Simon Tait
0419853945
simon@taitre.com.au
taitre.com.au
RLA: 269823



*This drawing is for illustration purposes only.
 All measurements are approximate and details intended
 to be relied upon should be independently verified.*

Area	m ²
Living	109.74
Porch	3.16
Carpport	20.46
Shed	9.52
Shaded Pergola	27.20
Total	170.08

Disclaimer: Please note this floor plan is for marketing purposes and is to be used as a guide only. All dimensions are estimates only and may not be exact measurements.