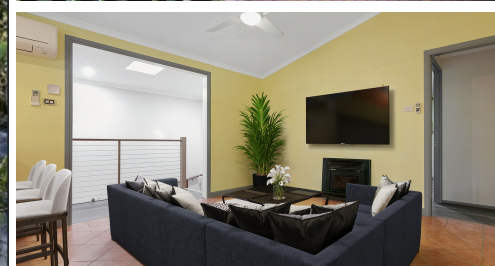


267 DIAMOND VALLEY ROAD, DIAMOND VALLEY, QLD, 4553



SOLD

ENJOY YOUR OWN PRIVATE OASIS

GRAY Property Services would like to present this lovely family home that has the ambience of country living on the outskirts of Mooloolah Valley.

Ideally positioned on 1.08 acre of land, the oasis of rainforest and fruit trees provides the charm that makes a lifestyle of relaxation yours to enjoy.

In brief the home offers:

- 2 generous size bedrooms upstairs with reverse cycle air conditioning and BIR
- Master bedroom downstairs with private bathroom, walk in robe and reverse cycle air conditioning
- Main bathroom upstairs shower over bath and vanity and separate toilet
- Lounge, dining room with air conditioning and a cosy wood heater
- Timber kitchen with plenty of bench space, gas cooktop
- Large laundry/utility room downstairs
- Deck on three sides giving plenty of covered entertainment area to enjoy with family and friends
- Fans throughout
- Gas hot water
- Double garage/shed with mezzanine storage
- 2 x 25000 litre water tanks
- Fruit trees and space for veggie beds
- Snake proof chook pen

5 mins to Mooloolah township

30 minute drive to the popular Sunshine Coast beaches and surrounding lifestyle amenities.

35 minute drive to the Sunshine Coast airport.

90 minute commute to Brisbane by train.

Diamond Valley enjoys the best of both worlds and a quality lifestyle not found in the hustle and bustle of coastal towns – a "Hidden Treasure"

Rates: Annual Approx - \$1500

Contact Cameron today on 0431 316 679 to arrange your viewing.

3 BED | 2 BATH | 2 CAR

PRICE:
\$630,000

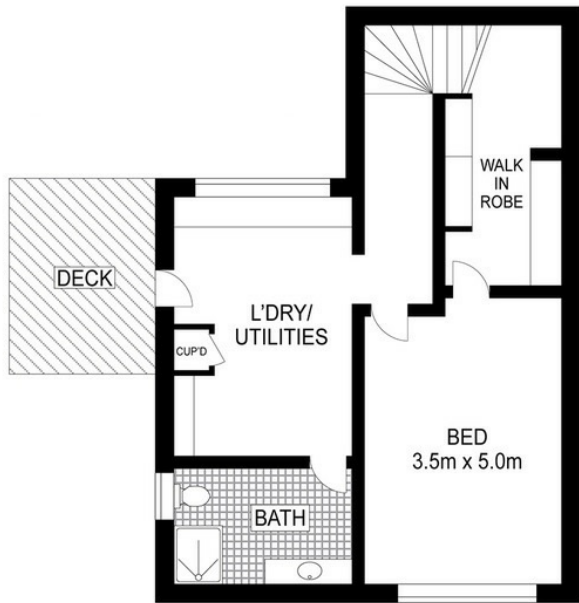
OPEN FOR INSPECTION:
N/A



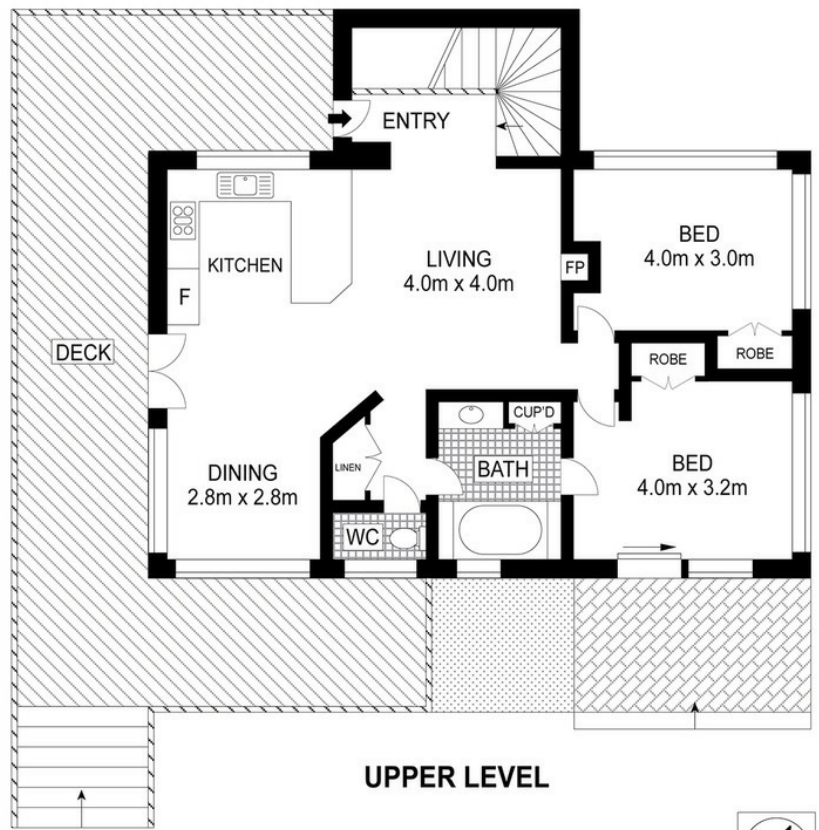
Cassandra and Cameron Gray
0431316679

cgray@atrealty.com.au

www.atrealty.com.au



LOWER LEVEL



UPPER LEVEL



Scale in metres. Indicative only. Dimensions are approximate. All information contained herein is gathered from sources we believe to be reliable. However, we cannot guarantee its accuracy and interested persons should rely on their own enquiries.

INT: 155 m²
EXT: 72 m²



267 Diamond Valley Road, Diamond Valley

Disclaimer: Please note this floor plan is for marketing purposes and is to be used as a guide only. All dimensions are estimates only and may not be exact measurements.