



SOLD

HIGHLY RECOMMENDED – MODERN LIVING – QUALITY FAMILY HOME

Welcome to 18A Cottenham Road Banksia Park a wonderful modern home in a fabulous foothills location. So close to all major facilities including, major shopping centres, medical centres, hospital, variety shops, high schools, primary schools and colleges, numerous hotels and restaurants.

Also within easy walking distance of parks, ovals, reserves, golf club, sporting clubs and public transport.

A large family home on approximately a 528 square metre allotment, packed with features and sure to impress the fussiest of buyers. There is plenty of room for all the family, all rooms are generous in size and include 3 bedrooms plus study. Bedroom one has a large walk in robe and ensuite with double shower, bedroom 2 and 3 have mirrored built in robes. The study could be used as a 4th bedroom if required. There are 2 separate family areas, the formal lounge/ living at the front of the property and the kitchen/dining/ living area at the rear.

A fabulous galley style kitchen awaits the new owners and includes omega stainless steel appliances, dish washer, range hood, large 5 burner stove top oven, loads of cupboard and bench space, large walk in pantry and breakfast bar.

The kitchen overlooks the living and dining area and the outdoor entertainment area.

Other features inside include a separate laundry and the fantastic family bathroom with walk in vanity, large shower, deep bath, linen cupboards and heat lamps. The home has heating and cooling covered with reverse cycle ducted air-conditioning. There is first class fixtures and fittings throughout, high ceilings, decorative cornices, down lights, quality carpets in the bedrooms and lounge/living and tiled floors for easy cleaning in the rest of the home.

Outside has a double garage with automatic roller door and extra storage area, off street parking in the driveway, fully covered entertainment area and low maintenance gardens. The home was built in 2012 by award winning builder Format Homes.

A must see if you are wanting a quality built home and to live in a beautiful suburb. Please see below for dot point features.

Highly Recommended – Modern Living – Quality Family Home

- Large family home – 4 Bedrooms or 3 plus study or home office
- Main bedroom – ensuite – double shower – walk in robes
- Formal lounge – large open plan kitchen – dine – family
- Fabulous galley style kitchen with stainless steel appliances – dishwasher Large walk in pantry – breakfast bar – loads of bench and cupboard space

4 BED | 2 BATH | 2 CAR

PRICE:
\$637,500

OPEN FOR INSPECTION:
N/A

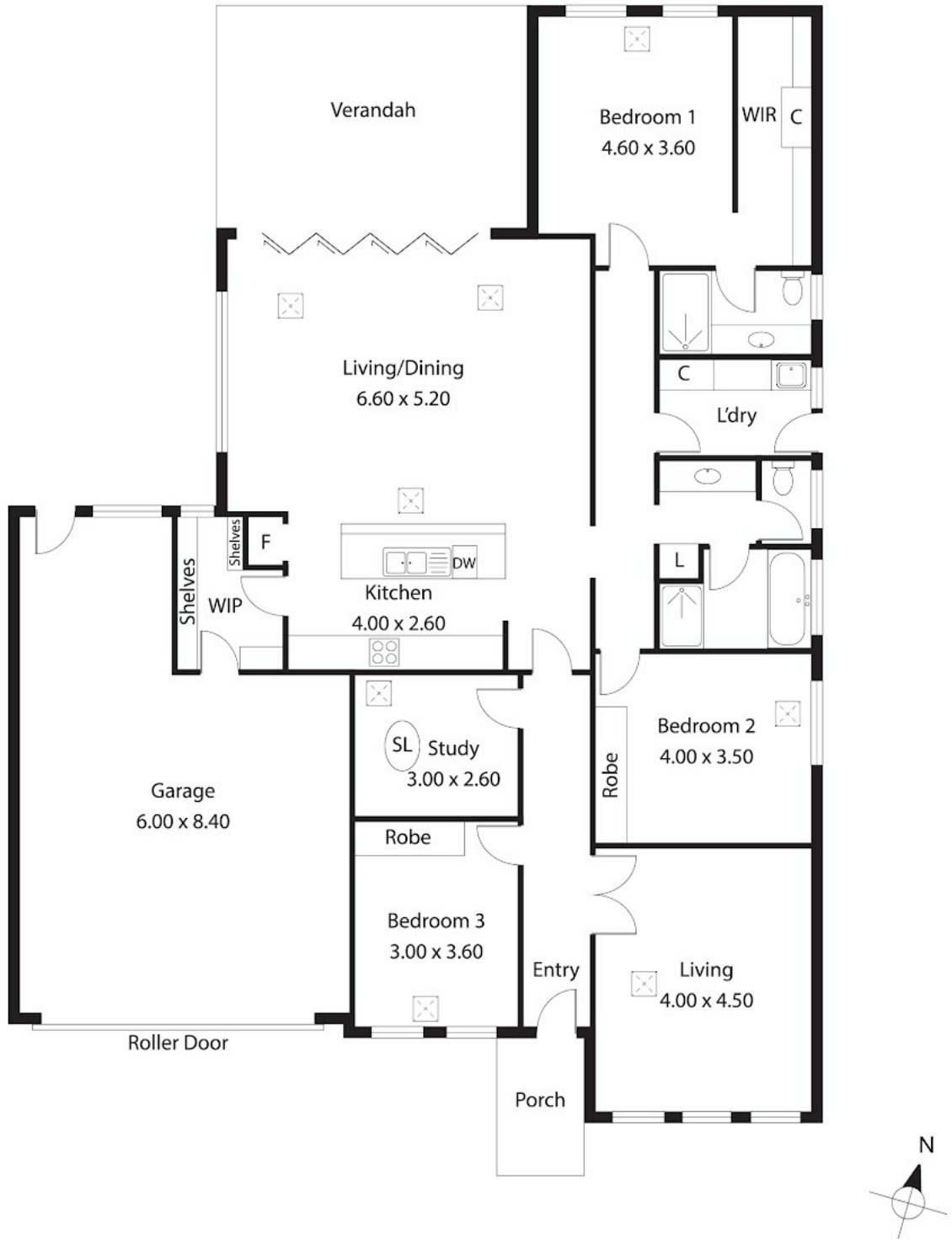


Jon Downs
0412977914

jondowns@atrealty.com.au

www.atrealty.com.au

RLA: 269823



Disclaimer: Please note this floor plan is for marketing purposes and is to be used as a guide only. All dimensions are estimates only and may not be exact measurements.

Garage: 30.40SQ.M
Verandah: 22.40SQ.M

Jon Downs: 247.20SQ.M
0412977914
jondowns@atrealty.com.au
www.atrealty.com.au

This drawing is for illustration purposes only. All measurements are internal and approximate. Details intended to be relied upon should be independently verified.

