



FOR SALE

SOLD BY KRIS SUTCLIFFE & AMANDA ROBERTS

EXECUTIVE STYLE HOME ON 3 ACRES! BRING YOUR HORSE & BIKES!

Close your eyes and try to imagine the perfect family estate, offering an idyllic horse-enthusiast's lifestyle with cleared land, fenced paddocks and shelter, and the Queensland state equestrian centre just minutes away. Combine it with a high quality family home fit for a growing family, and a shed your friends will envy, and you have one of the most appealing properties in the greater Elimbah area!

It is with great pleasure, that we present 19 Remor Court in Elimbah to the market for sale!

Upon entering this gorgeous Coral home, you will be impressed with the quality features and fixtures this home has to offer. Beautifully kept and presented, the home features a number of living and entertaining spaces, which include a large open plan lounge and formal dining, home cinema with raised flooring and a separate living / home gym.

The luxurious master suite features a large ensuite bathroom with a floating vanity, stone benches and dual sinks, an over-sized shower, separate toilet and a full sized bath. The luxury continues with a generous walk in robe and private parents retreat / study.

It's not only mum and dad that gets spoilt though, with the kids having a choice of 3 good sized bedrooms, each with built in robes and ceiling fans PLUS a kids retreat (or additional bedroom if required).

There are plenty of great features on offer, but it is the kitchen that's the true heart of this home! Featuring gorgeous stone benches, glass splash back, quality cooking appliances, overhead cupboards and a large walk in pantry. We love this kitchen and know you will too!

When you're finished cooking up a storm the patio entertainment area is a great place to sit and unwind. With views over your back yard, you can sit and watch your animals, listen to the wind blow through the trees and enjoy the wildlife that likes to pop in for a visit.

And what about that shed! Measuring in at 15m x 7.5m with 3m wall height, it's a very good size. Featuring dual roller doors front and back, the shed has power and lights and would easily fit 6 cars, plus there's an additional 3 car spots in the carport beside it.

5 BED | 2 BATH | 9 CAR

PRICE:

Offers over \$1,050,000

OPEN FOR INSPECTION:

N/A

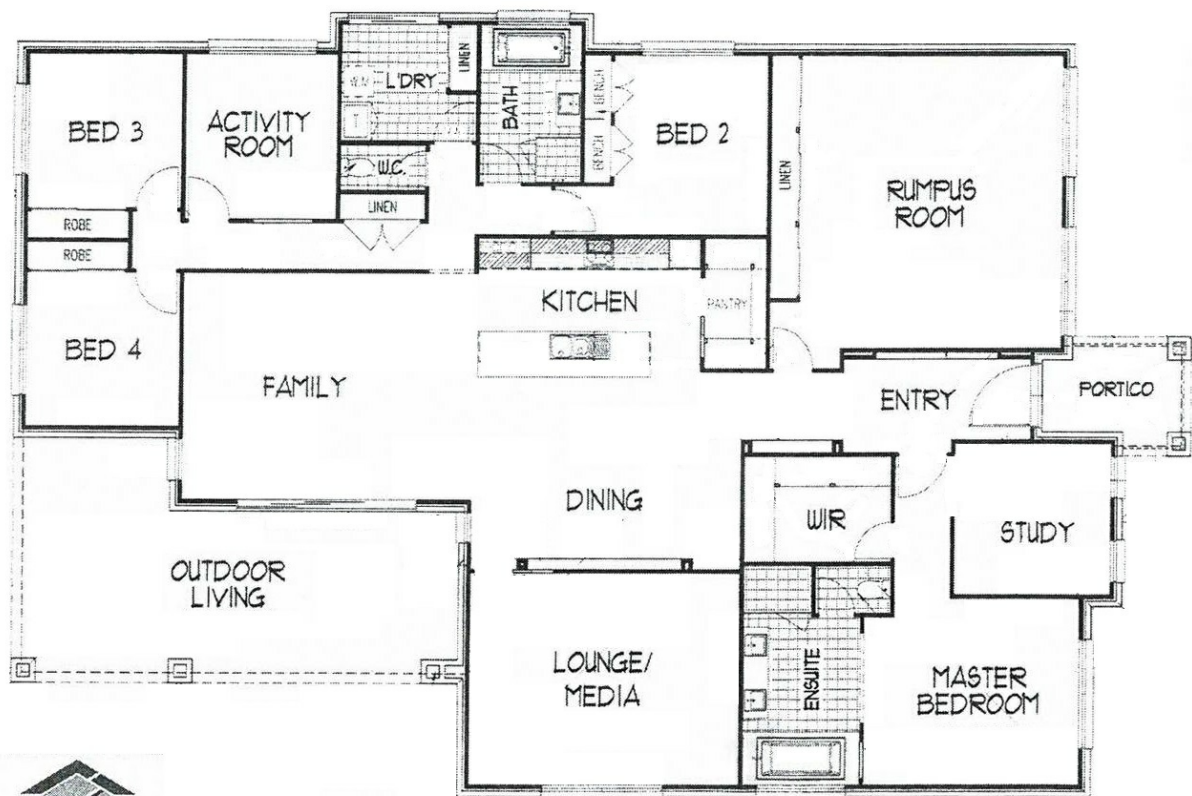


Kris Sutcliffe

0404742058

kris.sutcliffe@atrealty.com.au

www.atrealty.com.au



FLOOR PLAN LAYOUT.

MARCOOLA 32

Disclaimer: Please note this floor plan is for marketing purposes and is to be used as a guide only. All dimensions are estimates only and may not be exact measurements.