

SOLD

YOUR FAMILY HOME

**We have buyers looking in this area, please contact us today!

Superbly located in an established and peaceful neighbourhood yet just a stone's throw away from shops, schools and parks, this property offers the ultimate in family living.

Upon entry, be greeted by a family lounge designed with extraordinarily generous proportions, beaming with natural light and a cosy ambience further enhanced by a beautiful high vaulted ceiling. The space flows seamlessly into an open plan kitchen / meals and living area with a large kitchen and an abundance of floor space, perfect for families and entertaining a wealth of guests with ease.

Accommodation is very well appointed with three spacious bedrooms, master bedroom with full ensuite and walk-in-robe and the remaining bedrooms both generous in size with built-in-ropes. Key to maintaining a great lifestyle, the great outdoor space delivers paved landscaped areas for dining or relaxing, as well as grassy grounds and garden spaces for your enjoyment.

Additional features include ducted heating, evaporative cooling, alarm system, large laundry, bathtub in main bathroom, separate toilet, plenty of storage, tool/storage sheds, single garage with drive-through access and much more. Situated near schools, parks and an array of shops plus easy access to the freeway, this premium position is highly sought after.

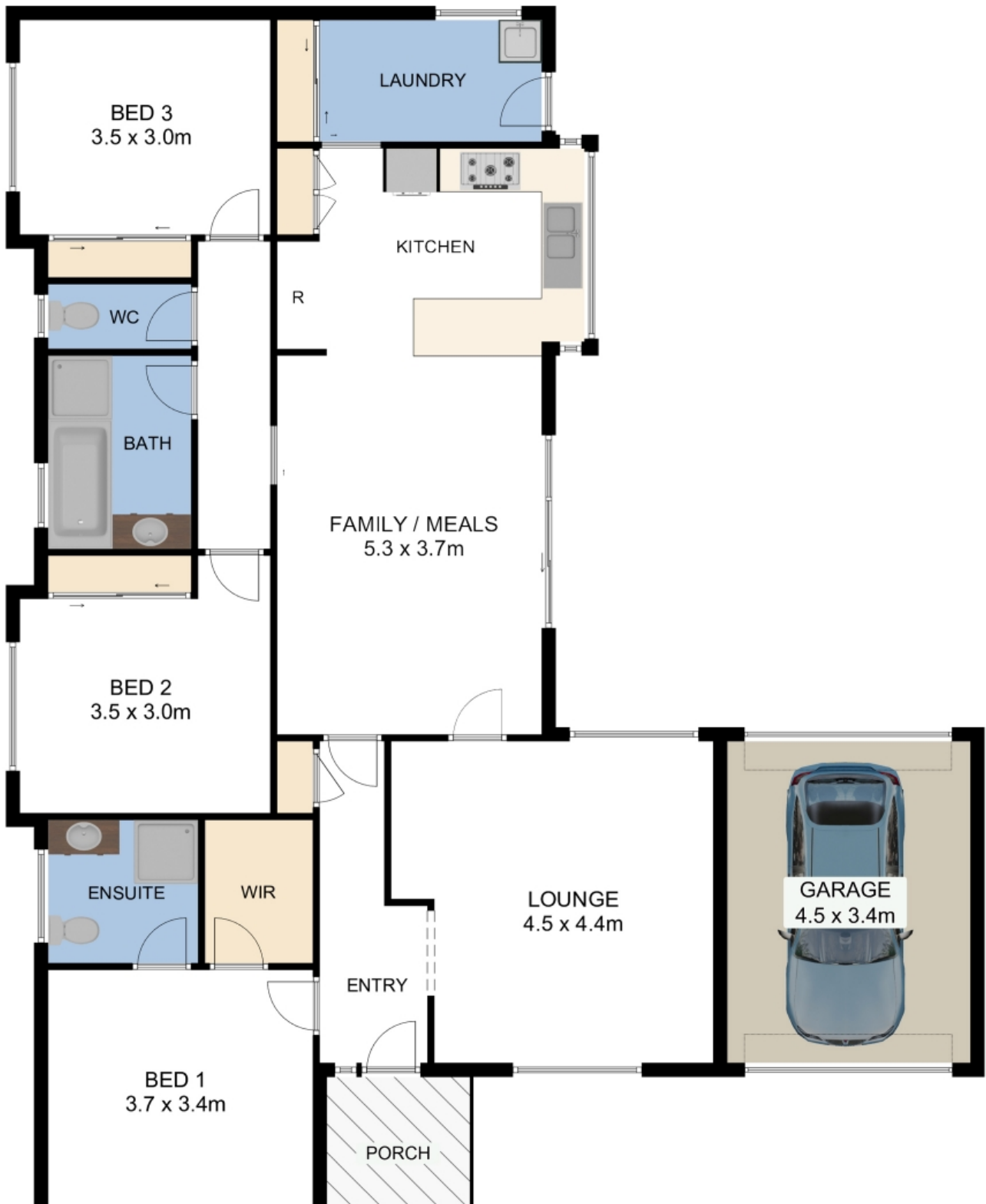
3 BED | 2 BATH | 2 CAR

PRICE:
\$655,000

OPEN FOR INSPECTION:
N/A



Samuel Hogan
0401315234
samuel@atrealty.com.au
www.atrealty.com.au



Disclaimer: Please note this floor plan is for marketing purposes and is to be used as a guide only. All dimensions are estimates only and may not be exact measurements.

