

SOLD

3 YEARS NEW !! THE BEST HOME IN THE BEST STREET!! IMMACULATE PRESENTATION! ONLY 27 MINS TO BRISBANE CBD AND 30 MINS TO GOLD COAST!

SEE ADVERTISEMENT FOR OPEN HOUSE TIMES THIS SAT & SUN

This beautiful, modern, very low maintenance townhouse, has 4 lovely bedrooms, DLUG, 2 bathrooms AND a 3rd toilet downstairs, also a separate dedicated laundry & large under-stairs storage area downstairs. The home is positioned in a perfect, quiet location, on the Eastern side of the highway with very close access to the motorway. Travel only 27 minutes to Brisbane CBD and only half an hour to the lovely Gold Coast. The complex is secure and private. Also, it is close walking distance to public transport if you don't wish to drive your car. There is a small park at the end of the road.

This immaculate home has a gorgeous, over-sized main bedroom with a large built-in wardrobe. It catches the morning sun. The ensuite has floor to ceiling tiles and a lovely free standing bath tub for a nice soak. There are 3 other good sized bedrooms with built-ins & ceiling fans, one with sound proofing for baby, office or the keen drummer. The second bathroom also has beautiful floor to ceiling tiles, coloured a beautiful dark mocha with chocolate and pepper accents. A lovely patio with a beautiful grassed area, 3m wide by the full length of the home (appx. 10m), would make a great extra dining space, b-b-que area, or simply a great area to relax after a hard day! There's an abundance of birdlife to watch and while away the hours. There is also a garden locker for your tools.

The ultra modern black custom kitchen, including a stainless steel splashback, pantry and stone benchtops, exudes style and taste. There is a built in convection stove and dishwasher with plenty of bench and storage space.

This sort after pocket is just starting to be developed, getting in quickly will ensure that you take full advantage of the short and long term market growth.

The body corp fees are only \$860 per half year. Rates are \$1529 per half year.

The body corp covers your house insurance and gardening of common areas

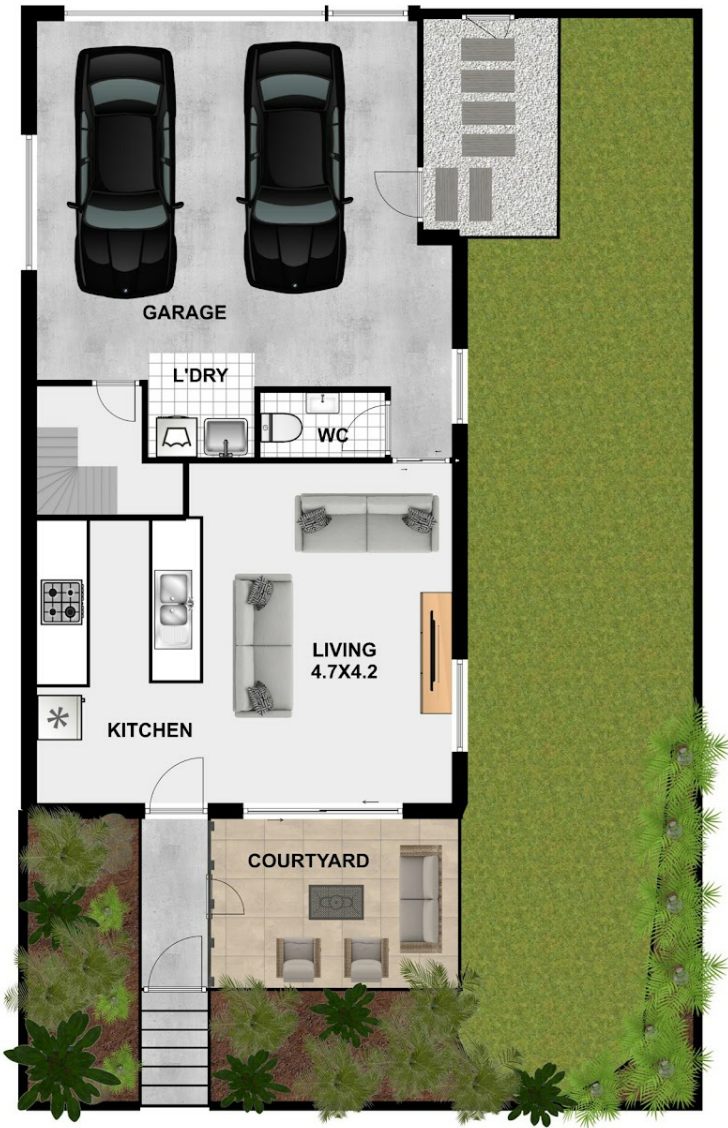
4 BED | 2 BATH | 2 CAR

PRICE:
\$447,000

OPEN FOR INSPECTION:
N/A



Bev Rolfe
0412363604
bevrolfe@atrealty.com.au
www.atrealty.com.au



Disclaimer: Please note this floor plan is for marketing purposes and is to be used as a guide only. All dimensions are estimates only and may not be exact measurements.