



SOLD

LUXURIOUS FAMILY LIVING IN THIS MODERN AND SPACIOUS HOME

Modern, spacious and stylish family living has never looked better than this picture-perfect Pallara property. You will live within one of Brisbane's most sought-after suburbs and just moments from everything you could ever need while the hustle and bustle of the Brisbane CBD is less than 30 minutes from your front door.

Those in need of room to move and play will adore the generous two-storey floorplan with four bedrooms, two bathrooms and multiple living spaces where you can spread out and relax.

The main level is dedicated to open-plan living with a light-filled and air-conditioned kitchen, dining and family room serving as the hub of daily life. Here, glass sliding doors open to the covered and tiled outdoor entertaining area, with a ceiling fan, where you can host guests, cook up a storm on the barbeque and watch as the kids explore the fully fenced and easy-care backyard.

Preparing meals for loved ones will be a pleasure in the quality chef's kitchen with sweeping stone benchtops, a large butler's pantry and ample storage. There's also a double-size fridge space plus a suite of high-end appliances including a natural gas cooktop, an oven, rangehood and a dishwasher.

Also on this main level is a separate lounge room set at the front of the home and there's a powder room, laundry and double garage.

At the top of the stairs, you will find an open retreat that would make the ideal teenager's haven or playroom. All four bedrooms are also set on this upper level including the air-conditioned master with a walk-in robe and ensuite. The guest bedrooms have built-in robes and easy access to the main bathroom with a separate bath, shower and toilet.

Ceiling fans throughout promise added comfort plus there are security screens, plush carpet and a 392sqm block, built in July 2018 by Coral Homes with room for a pool (STCA).

Childcare options, bus stops and schools are nearby along with Pallara Central Park, Pallara District Park and Brookbent Park and Dog Park. Highly regarded schools are within easy reach

4 BED | 2 BATH | 2 CAR

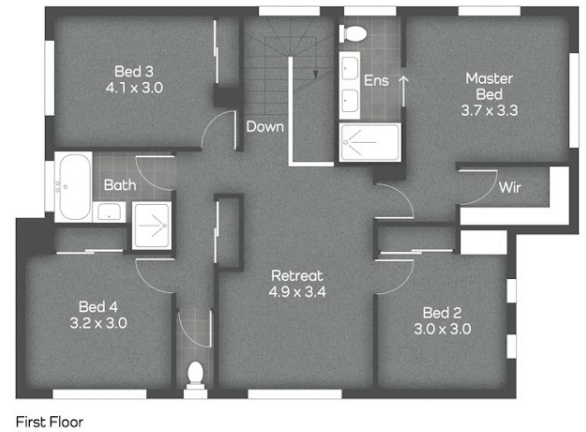
PRICE:
\$780,000

OPEN FOR INSPECTION:
N/A



Mohammad Sahadat
0430078532

mohammad@atrealty.com.au
www.atrealty.com.au



PROPERTY ADDRESS

41 Pallara Avenue
Pallara, Qld 4110



PROPERTY DETAILS

- 4 Bed
- 2 Bath
- 2 Car

All measurements shown or implied area approximate and no responsibility is taken for any error, or omission, nor is any warranty given. These plans are for illustrative purposes only and should be used such. Copyright 2020. All rights reserved by AbstractView.com.au

PROPERTY FLOOR PLAN SIZE

Approx. floor plan area is 266m²



Disclaimer: Please note this floor plan is for marketing purposes and is to be used as a guide only. All dimensions are estimates only and may not be exact measurements.