



SOLD

THIS HOME OFFERS SPACIOUS LIVING, POOL AND SO MUCH MORE

LARGE MODERN HOME

Set on a 919m² block of land and an internal area of 294m² and is in an exclusive part of Banora Point. This home was built to the highest quality. This impressive spacious single-level home offers 2 separate living areas, 2 bathrooms, 4th Bedroom/Study conveniently positioned at the front of the house. Generously sized kitchen with walk-in pantry, and finished with granite benchtops. Outside offers an area to relax, enjoy a barbecue whilst you watch the children in the large inground pool. At the rear of the garden is a large colourbond shed with a roller door for the handyman of the house. Double door remote garage plus double gate access at the side of the house for a boat or caravan. All this plus so much more, this home will blow you away with its presentation and what it offers.

Main Features -

- Large entrance
- Large master bedroom with walk in robe and ensuite
- Large gourmet kitchen/family room/dining
- Formal lounge and dining at the front of the house with wet bar
- Double garage
- Covered area off the kitchen area
- Large in-ground salt chlorinated pool

ADDITIONAL EXTRAS:-

- Extra-wide hallways
- Breezes throughout the house
- Plenty of storage
- Dishwasher
- Large outside shed with roller door
- Easy maintained gardens
- Side gated access for boat or caravan
- Open fireplace in formal lounge

4 BED | 2 BATH | 2 CAR

PRICE:
\$960,000

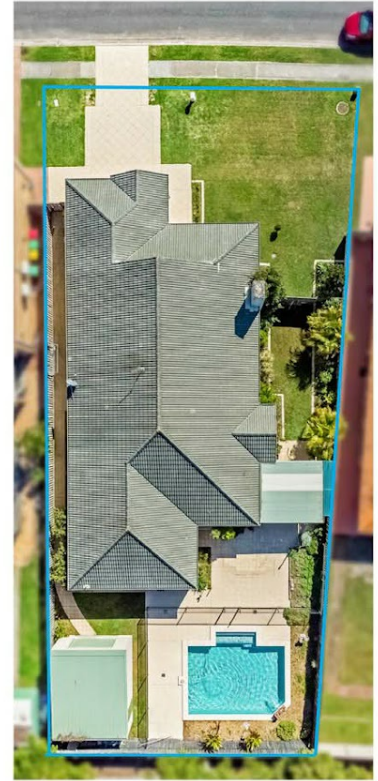
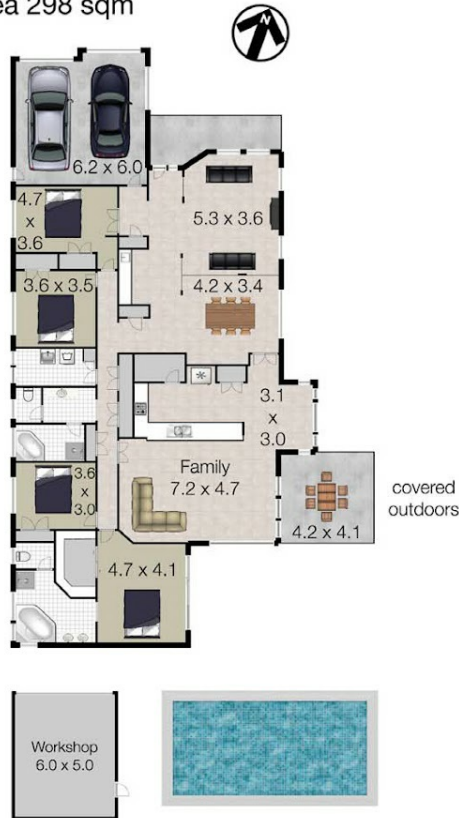
OPEN FOR INSPECTION:
N/A



Sharon Smythe
0412195500
sharonsmythe@atrealty.com.au
www.atrealty.com.au

5 Avondale Drive BANORA POINT 2486

Total Approximate Floor Area 298 sqm
Total Land Area 918.7 sqm



Whilst every attempt has been made to ensure the accuracy of the floor plan. Measurements of doors, windows rooms and any other items are approximate and no responsibility is taken for any error, omission or misstatement. This plan is for illustrative purposes only and should be used as such by any prospective purchaser.

Disclaimer: Please note this floor plan is for marketing purposes and is to be used as a guide only. All dimensions are estimates only and may not be exact measurements.