



SOLD

SOLD AGAIN IN 1 OPEN BY NANCY BIRD

Nancy Bird is proud to present for the first time on the market..... this immaculate "Display Home" presented, beautifully designed and finished, 4 KING Bedroom 2 Bathroom PLUS Study OR 5th Bedroom, 3 Car plus storage, Family Home.

This rare beauty boasts THREE Separate HUGE Living Area's, a MASSIVE 100 sqm approx. Patio/ Entertaining Area and a BIG lush green lawn area, PLUS room for a pool, easy care garden beds with bore reticulation, double gated side access for that boat/caravan/work ute/ car storage, there's even room for a granny flat ! (by council approval only)

Quality built by Plunkett Homes " Mayfair Mammoth" design, with a SHOWSTOPPING 379 sqm of Building, situated on a MASSIVE RARE 792 square meter block. this home will tick every box!

This is a RARE opportunity to secure this gorgeous spacious BIG family home, perfectly located in a whisper quiet cul de sac, opposite quiet green pretty park and a 2/3 minutes walk to Atwell Primary School and 5 minutes walk to Local Atwell Stargate Shopping Centre !

Be quick !!this property will impress the fussiest of buyers and is a rare opportunity to secure your family's forever home!

With brand new BIG kitchen, endless white sparkling stone bench tops, brand new ducted air conditioning throughout, new dishwasher, neutral modern freshly painted décor, brand new quality wooden flooring, new quality carpets & new modern blinds, downlighting and skirting boards throughout, this home is finished to perfection, there's nothing to do just move in and enjoy !

VIEWING WILL IMPRESS THE FUSSIEST OF BUYERS ! Call Nancy Bird anytime on 041 555 8594 for any further queries and register your interest today or you will miss out on this opportunity!

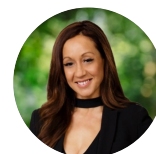
Features include :

- Quality built & finished by Plunkett Homes "Mayfair Mammoth" Design" approx. 379 sqm of building on a approx. 792sqm block
- Quality modern contemporary finished with new modern neutral décor throughout new fresh paint, quality new modern blinds new timber flooring, new quality carpets, skirting boards and stunning down lighting throughout

5 BED | 2 BATH | 3 CAR

PRICE:
\$727,500

OPEN FOR INSPECTION:
N/A



Nancy Bird
0415558594
nancybird@atrealty.com.au
www.atrealty.com.au



33 Mosedale Retreat, Atwell

AREA - 230m²
 GARAGE - 36m²
 VERANDAH - 7m²
 PATIO - 100m²
TOTAL - 273m² APPROX
LAND SIZE - 792m² APPROX



PLAN IS APPROXIMATE AND REPRESENTATIONAL ONLY
 WWW.TATEFLOORPLANS.COM.AU

Disclaimer: Please note this floor plan is for marketing purposes and is to be used as a guide only. All dimensions are estimates only and may not be exact measurements.