



FOR SALE

LUXURY PENTHOUSE WITH TWO SECURE CAR PARKS

MILTON

Stunning, elegant, timeless, distinctive

Designer style living over two magnificent levels all in a boutique apartment location. Edge at Milton takes its cues from the days of large and boutique styled developments and the penthouse is a sensation, offering an unprecedented fusion of architecture, views and location. Surrounded by newly landscaped Manning Street, the location provides the residents with resort style living and much more. Dotted along Park Road and surrounds are high end boutiques stocking luxury labels, fine jewellery whilst vibrant cafes, restaurants and eateries animate the streets and bring life after dark.

Prestigious double-storey living boasting spaciousness and grandeur from the moment you enter the penthouse.

You can enjoy the breathtaking views of the Brisbane River and Mt Cootha from both levels while floor to ceiling tinted windows and sliding doors allow you to enjoy these striking river and mountain views from inside your penthouse apartment.

The owner has presented a perfect canvas for the new owners to transform the penthouse into their new exclusive home.

Designed to embrace two levels of sophistication the upper level bedroom is framed by glass panels in accord with the architects design for uninterrupted views.

The impressive 9 metre long walk in ward robe is off to one side of the bedroom and is a real surprise in these days of small spaces. The superior sense of luxury also continues into the ensuite which features twin vanities and spa.

- Brisbane CBD 2.6 klms from Milton by car or 13 minutes by train
- Effortlessly stroll to local Park Road cafes, retail, parks and River.
- Generous kitchen elements include stone benchtops and classy splashbacks, dishwasher and generous cupboard space.
- Developed by Flagship Australand

1 BED | 2 BATH | 2 CAR

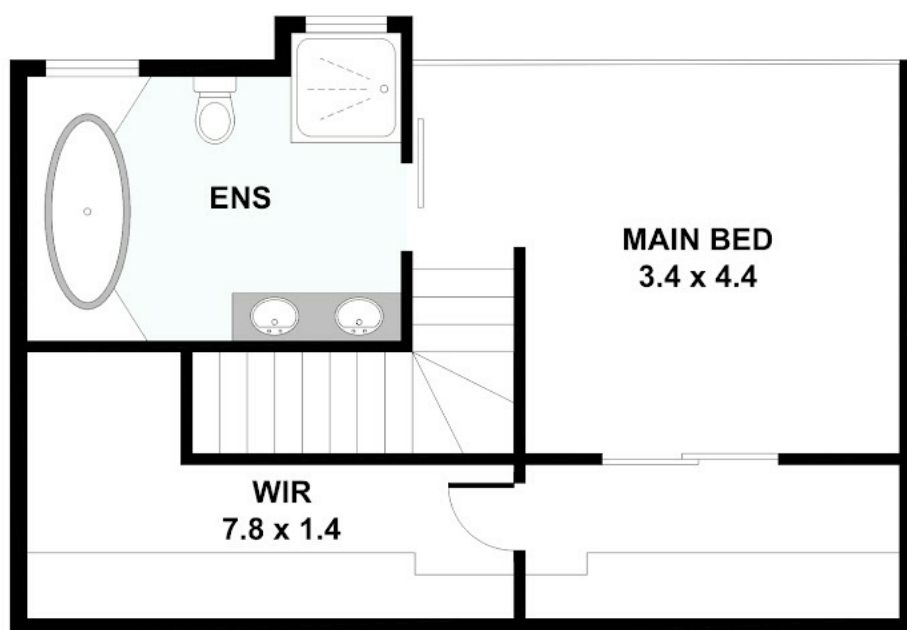
PRICE:
525,000

OPEN FOR INSPECTION:
N/A

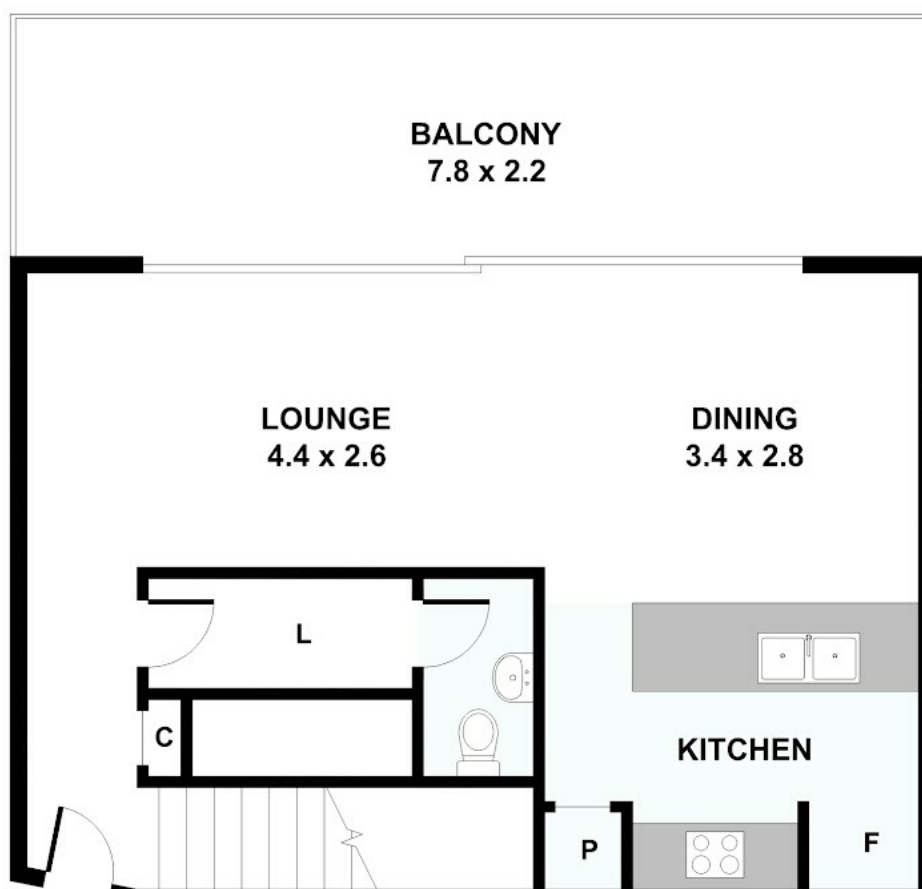


Carey Halfpapp
0438928538
carey@atrealty.com.au
www.atrealty.com.au

1104/18 Manning Street, Milton



UPPER LEVEL



Disclaimer: Please note this floor plan is for marketing purposes and is to be used as a guide only. All dimensions are estimates only and may not be exact measurements.

Please note: All stated dimensions are approximate only. Particulars given are for general information only and do not constitute any representation on the part of the vendor or agent.