



# FOR LEASE

## WHISPER QUIET BOUTIQUE NEIGHBOURHOOD CENTRE

Tucked away in a whisper quiet street in Denistone East opposite Community Park. East facing offering plenty of street parking. Suitable for multiple business usages including café or takeaway, dentist, hairdresser, specialist beauty, cosmetic, or medical use. Ideal office facility to suit professional people looking to expand their business.

Office/retail space centrally located to Macquarie Park, Top Ryde, Eastwood & West Ryde

- High ceilings
- Light filled interior
- East Facing
- Ample street parking
- Suitable for a variety of businesses
- Flexible lease terms
- Long term lease available
- Available Now for immediate occupation
- Zoning-B1 Neighbourhood Centre

All outgoings at lessees cost.

Approx. Floor Areas:

Main Shop: 8 x 7.5m = 63.6sqm

Storage Room 1 x 7.45m = 7.45.6sqm

Rear room Incl. Kitchen: 3.45 x 7.45m = 27.7sqm

Toilet: 1 x 1.8m = 1.8sqm

Total Usable Floor Area: 98.55sqm

Don't miss this fantastic opportunity to start or expand your growing business.

1 BED | 1 BATH | 0 CAR

PRICE:  
\$600 Per Week

OPEN FOR INSPECTION:  
N/A



**Gavin McCutcheon**

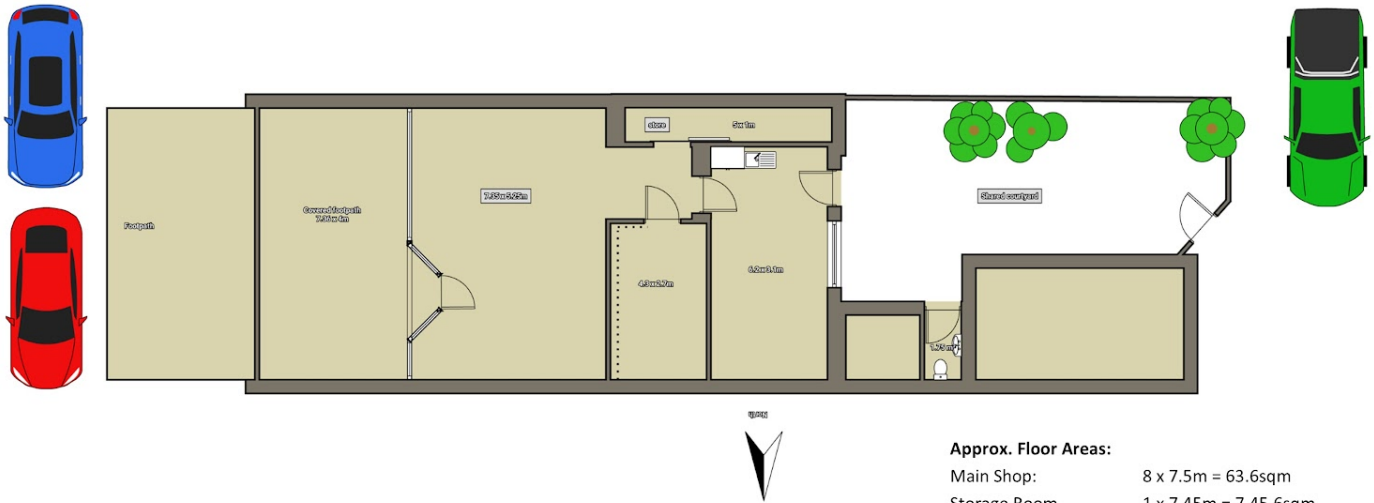
**0413686969**

[gavin@atrealty.com.au](mailto:gavin@atrealty.com.au)

[buyingsellingrenting.com.au](http://buyingsellingrenting.com.au)

# 3 Doig Avenue, Denistone East

© BSR, Sydney, Australia, Denistone East NSW 1515



### 3 Doig Avenue, Denistone East

Disclaimer: Floor plans and site plans are intended as a guide only. They are not part of any legal document or title and are subject to errors, omission, and inaccuracies and should not be used as reference. Sizes and dimensions are approximate only. Interested parties should make their own enquiries.

Disclaimer: Please note this floor plan is for marketing purposes and is to be used as a guide only. All dimensions are estimates only and may not be exact measurements.