



SOLD

FAMILY HOME OR GREAT INVESTMENT

This low set home situated on a generous size block with side access is a must for viewing which is also close to all amenities. Situated in a quiet street and close to local schools, parks and bus transport this home presents an excellent opportunity.

- Features Include;
- * 3 Generous Bedrooms
 - * Good Size Lounge
 - * Separate Dinning
 - * 1 Bathroom
 - * Laundry
 - * Undercover Car Parking
 - * Garden Shed
 - * Solar Panels
 - * Side Access

With all the conveniences at your fingertips including Logan Central Shopping Plaza, Woodridge Train Station and so much more. The home is also within close proximity to the Pacific Motorway, Logan Motorway and is approximately 20 minutes to the Brisbane CBD.

So now is the time to call Errol to secure a private inspection or visit one of our open home times to view this low maintenance family home in a suburb that is experiencing rapid growth over the last few months

3 BED | 1 BATH | 2 CAR

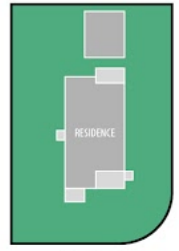
PRICE:
\$355,000

OPEN FOR INSPECTION:
N/A

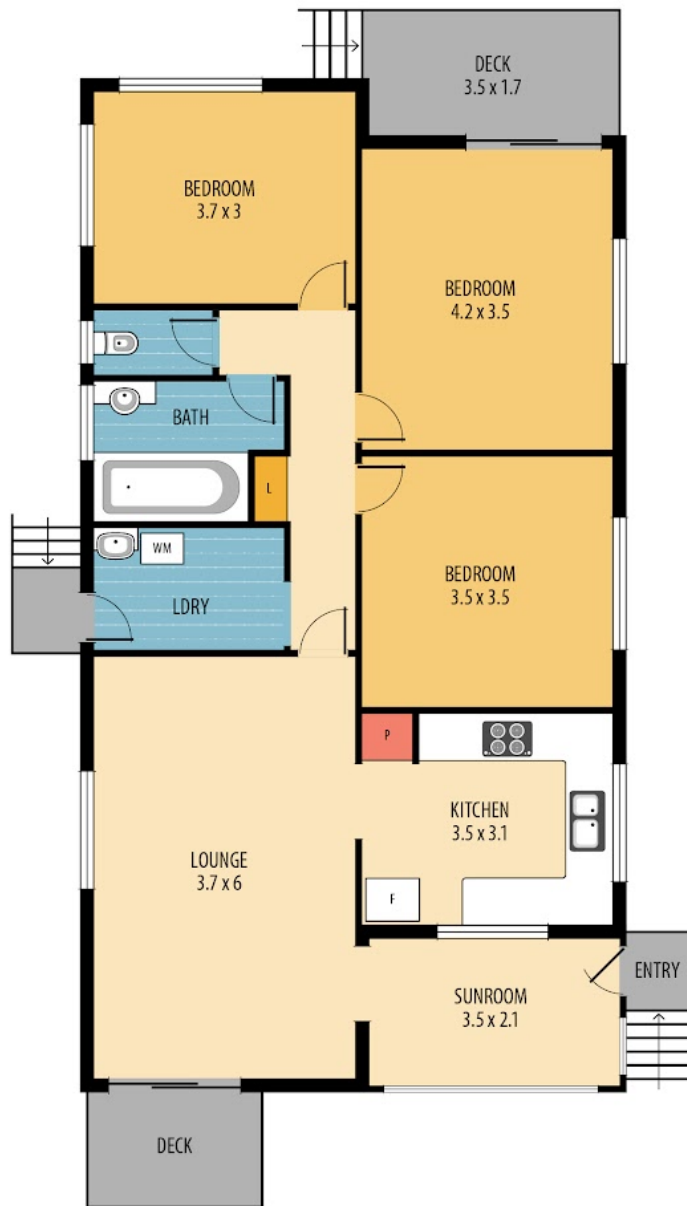
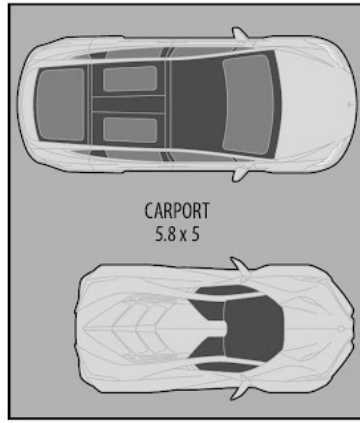


Errol Reibelt
0415812557
errol.reibelt@atrealty.com.au
www.atrealty.com.au

SITE PLAN
(not to scale)



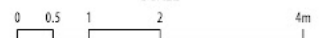
JEAN ST



Total area: 138m² (approx.)
Internal area: 94m² (approx.)
Outdoor area: 14m² (approx.)
Garage: 30m² (approx.)



SCALE



Disclaimer: Please note this floor plan is for marketing purposes and is to be used as a guide only. All dimensions are estimates only and may not be exact measurements.

20 JERVIS ST, WOODRIDGE

DISCLAIMER: ALL DIMENSIONS ARE AN APPROXIMATION ONLY AND NO GUARANTEE IS GIVEN WITH RESPECT TO ACCURACY.

Errol Reibelt
0415812557
errol.reibelt@atrealty.com.au
www.atrealty.com.au

