




# Sold

4  | 2  | 2 

16 ELBERTA ROAD, MURRAY BRIDGE, SA, 5253

ANSELL  
Real Estate



## A SPACIOUS FAMILY ENTERTAINER WALKING DISTANCE TO SCHOOLS AND RIVER RESERVE

Perfectly located just walking distance to Murray Bridge High School, Murray Bridge South Primary School and the serene Long Island River reserve this spacious family home is sure to impress.

Set on a large 989m<sup>2</sup> (approx) allotment the 4 bedroom 2 bathroom home has multiple living and entertaining spaces providing more than enough room to move and for the for the kids to play.

As you enter the home through the double entrance doors you will notice new flooring throughout the functional floorplan. Two separate lounge rooms occupy opposite ends of the home whilst generously proportioned room sizes, an abundance of natural light and ducted heating and cooling provide comfortable living all year round

What we love about this property:

- Location location location
- Ensuite and walk in robe to the main bed room and built in robes to the remainder bedrooms
- Generous room sizes with loads of natural light
- Multiple undercover entertaining areas
- Large solar system
- Rainwater
- Extra R/C split system AC and gas heater
- Dishwasher in kitchen
- Shed with concrete floor, power and lights

**Callum Ansell // 0468671665**

callum@ansellrealestate.com.au // [www.ansellrealestate.com.au](http://www.ansellrealestate.com.au) // RLA 305012



PRICE:  
\$385,000

OPEN FOR INSPECTION:  
N/A

# Sold

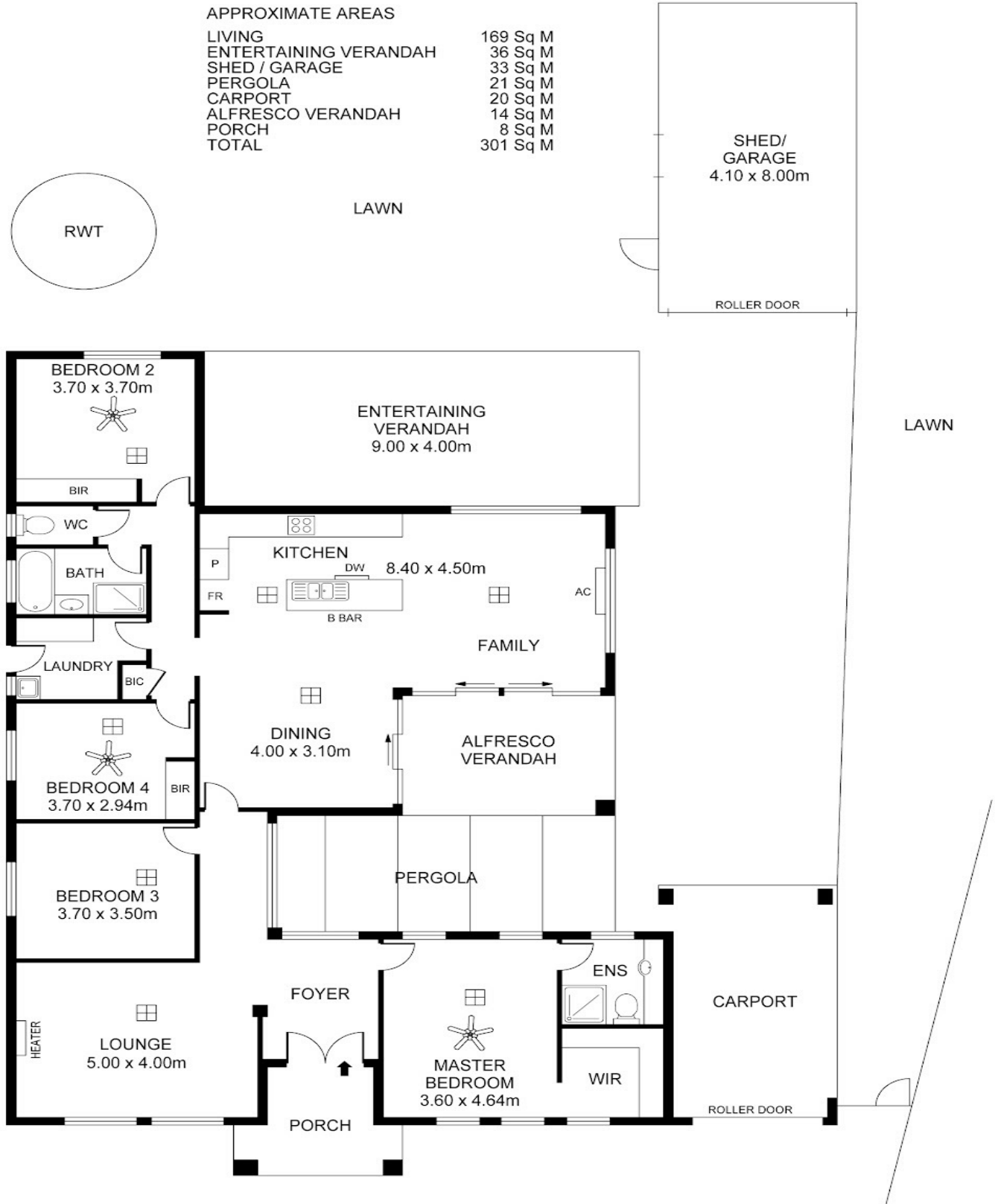
4 | 2 | 2

# ANSELL

Real Estate



16 ELBERTA ROAD, MURRAY BRIDGE, SA, 5253



16 ELBERTA ROAD, MURRAY BRIDGE



## Callum Ansell // 0468671665

callum@ansellrealestate.com.au // [www.ansellrealestate.com.au](http://www.ansellrealestate.com.au) // RLA 305012