

23 SUMMIT COURT, HAMPTON PARK, VIC, 3976



SOLD

SOLD SOLD SOLD \$715,000 BY VIET HA 0406 246 384

Cherished Family Charm with Appealing Future Options

OFFERS CLOSE (Unless Sold Prior) - Tuesday 16th of November at 6:00pm

Land size 598 m2 Approx. & Potential Subdivision (S.T.C.A)

A picture of pride in beautiful, manicured gardens, this light filled gorgeous home is placed on 598sqm (approx.) corner block of future opportunity. The home itself is superb! Prestigiously positioned in Hampton Park Central and meticulously upgraded for immediate enjoyment. It is in a premium position, and you are bound to fall in love with it! It's the ideal time to pounce on this superb piece of land, and all the potential it holds to boost your property portfolio.

Like a breath of fresh air, this renovated home has space, contemporary finishes and is large enough for the biggest of families, while having the flexibility for future development (STCA).

The house comprises, five bedrooms inside, a master bedroom with a walk-in robe and ensuite, the other four bedrooms contain built in robes, an updated bathroom, powder room. The home also has a beautifully presented formal lounge, and the open plan means that there is plenty of sunlight throughout the house. There's also a plethora of car accommodation with the lock up garage. Set to impress your friends, the alfresco deck is ideal for entertaining with family and friends and overlooks a smartly landscaped backyard where children can play. This is a great unit that offers a huge amount of potential in a fast-growing suburb

Inside you have an open living with dining, the near-new kitchen with stone benchtop, 900 mm upright stainless-steel cooktop with electric fan force oven, dishwasher, looks over the meals area. The huge rumpus room has a split system air conditioner. There is ducted heating throughout the home with tinted windows and to top it all off; a double lock up garage with remote control and an additional carport.

Property features include:

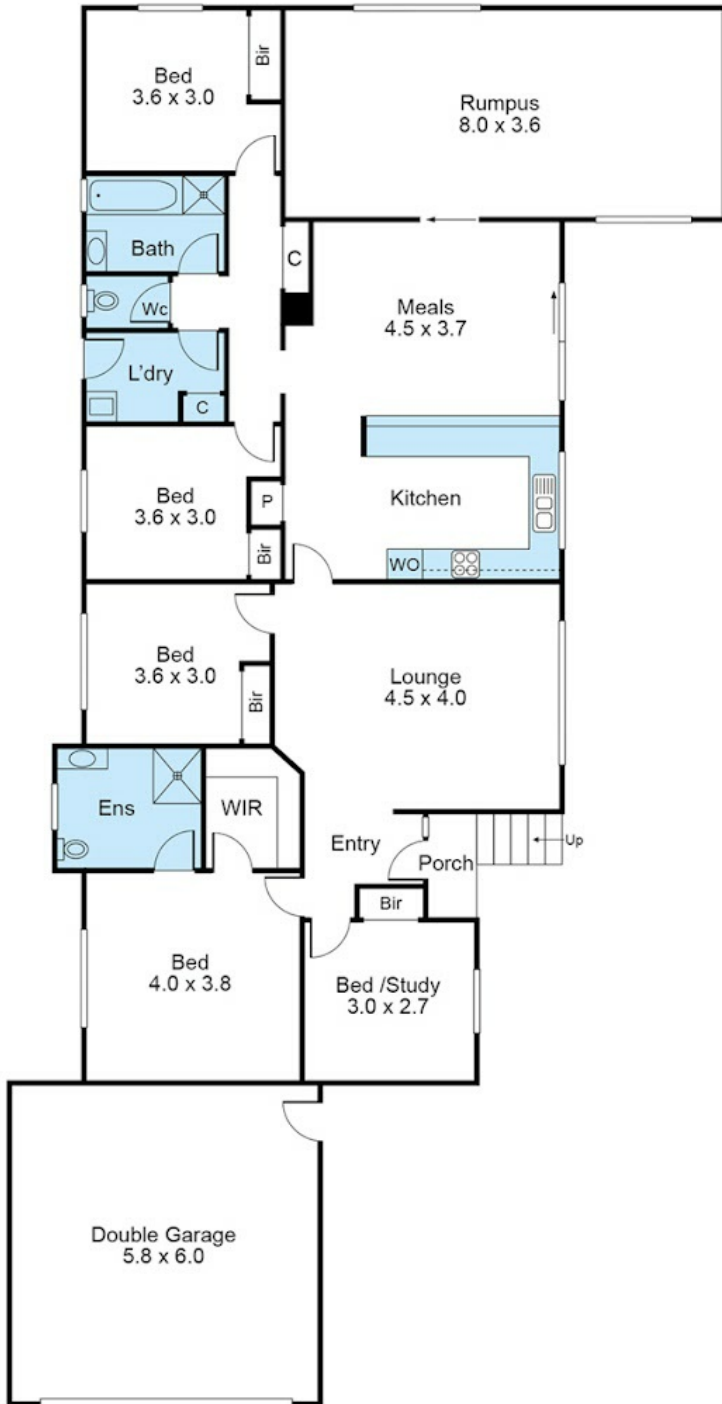
5 BED | 2 BATH | 5 CAR

PRICE:
\$715,000

OPEN FOR INSPECTION:
N/A



Viet Ha
0406246384
viet@vietha.com.au
vietha.com.au



Disclaimer: Please note this floor plan is for marketing purposes and is to be used as a guide only. All dimensions are estimates only and may not be exact measurements.

