



SOLD

TRANQUIL $\frac{3}{4}$ OF AN ACRE TREASURE ONLY 35MINS TO THE CBD!

Welcome home to 17 Porsche Court!
Your new lifestyle awaits!!

If you could dream of a picture perfect opportunity to plant the flag and raise the family, would it be on a tranquil $\frac{3}{4}$ of an acre block set at then end of a whisper quiet & tightly held enclave only 35mins from the CBD?? Would it be in an immaculately presented & spacious family home that exudes warmth, charm & character?? Would it be a home that was set on the most enviable of acreage block's boasting a beautiful selection of gardens, huge stretches of yard space for the kids & a lovely tree line backdrop?? Would it be a potential plus home with an abundance of unused allotment ready for the pool, large workshop shed or self contained granny flat to complete your family masterpiece?? Would it be a home that lends itself to being a hidden country retreat all while only being 35mins to the CBD??

Now you can make your dreams happen!!...You only live once!! The keys are waiting!!

Features include;

* 2nd to none new lifestyle location to bring up the family! Positioned only a stones thrown to gorgeous Lake Samsonvale & Bullocky Rest! All ready for you & the kids on your next weekend adventure!!

- * $\frac{3}{4}$ of an acre useable block allotment with no registered easements
- * Whisper quiet end of Cul de Sac position
- * Tightly held pocket
- * Only 35mins from the Brisbane CBD

- * The home is proudly set back on the block allowing for the epitome in ultra private living
- * Immaculately presented and meticulously maintained property
- * Sprawling 301m² home all on the single level
- * Huge side access direct into the backyard - perfect for large caravan or boat storage securely by the family home

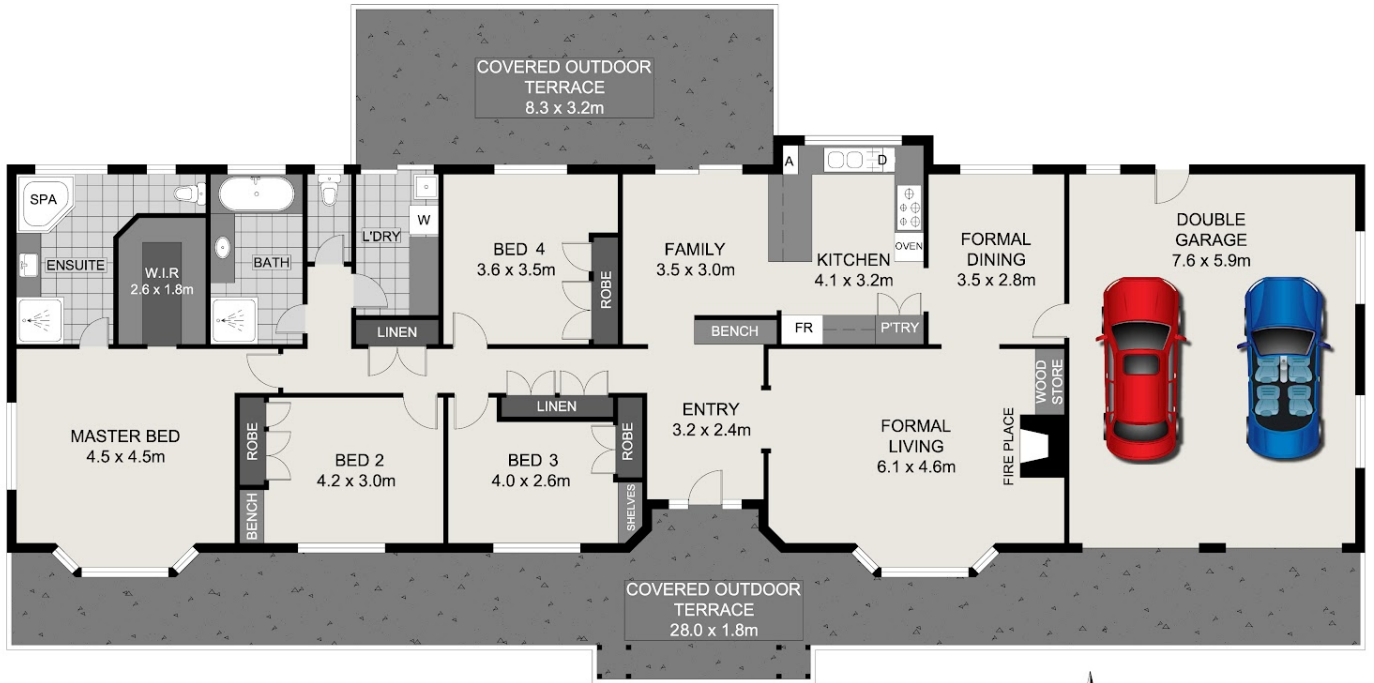
4 BED | 2 BATH | 2 CAR

PRICE:
\$1,045,000

OPEN FOR INSPECTION:
N/A



Patrick D'Arrigo
0447381869
pdarrigo@atrealty.com.au
www.atrealty.com.au



0 1 2 3

Scale in metres, indicative only. Dimensions are approximate. All information contained herein is gathered from sources we believe to be reliable. However, we cannot guarantee its accuracy and interested persons should rely on their own enquiries.



INT : 173.16m²
 EXT : 83.00m²
 GARAGE : 44.84m²
 TOTAL : 301.00m²

17 Porsche Court, Joyner

Disclaimer: Please note this floor plan is for marketing purposes and is to be used as a guide only. All dimensions are estimates only and may not be exact measurements.