



SOLD

A BEAUTIFUL HOME, PERFECT FOR A GROWING FAMILY & A GREAT INVESTMENT. WELCOME TO 32 LAKEVIEW DRIVE, DEEBING HEIGHTS...

A property like this highlights the fundamental features that make a great home and an even better investment. 32 Lakeview Drive is located in the prestigious 'Deebing Heights' - situated on your own 900 sqm slice with gardens to the front, garages at the back & everything you could want in-between.

Providing for a growing family this home includes four neat bedrooms with built-in robes and a household bathroom. The master suite offers plenty of space along with a private ensuite & walk-in robe. Throughout the home there is an abundance of opportunity when it comes to adding value and personalising to suit your taste.

The heart of the home is centred between the living and dining. This creates a wonderful sense of connectivity, whether you're cooking for a famine, lounging for the sake of it, or entertaining guests - you can hold a conversation anywhere in the house.

With expansive exterior features such as; double bay shed, gated side access, a very relaxing outdoor space towards the front with specially planted foliage for privacy. It's a simple, fun & relaxing lifestyle that's on offer.

Property Features:

- Relaxing, covered outdoor area. Perfect for entertaining as well.
- Four (4) neat, carpeted bedrooms with ceiling fans & built-in wardrobes.
- Master suite with a walk-through robe, A/C & private ensuite.
- Large living area linking the home, sporting laminate timber flooring.
- Kitchen space with electric cooktop, dishwasher, wall mounted microwave & oven.
- Semi-hexagonal dining area glows with the natural light.
- Equip with a laundry / mudroom.
- Tiled floors & downlight's throughout the entire home.
- Another outdoor sitting area to the rear

4 BED | 2 BATH | 6 CAR

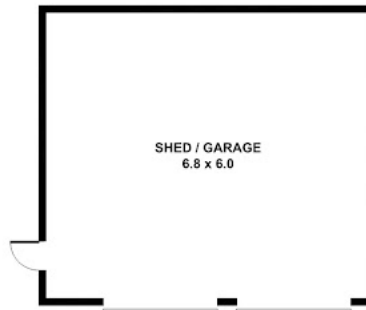
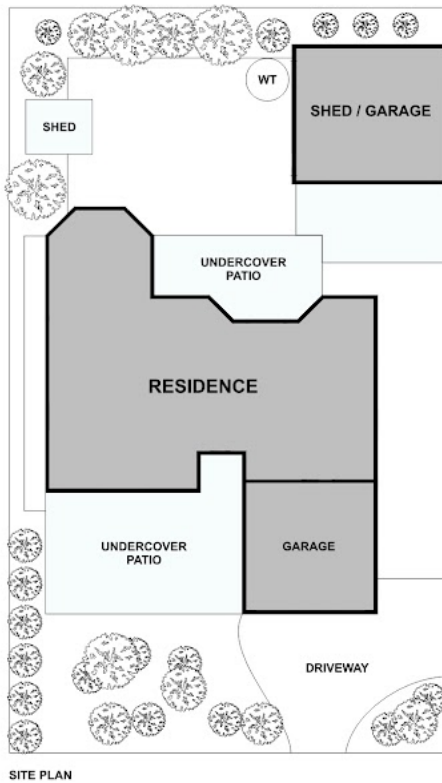
PRICE:
\$650,000

OPEN FOR INSPECTION:
N/A



Nathaniel Salesa
0499925947
natesalesa@atrealty.com.au
www.atrealty.com.au

32 Lakeview Drive, Deebling Heights



Disclaimer: Please note this floor plan is for marketing purposes and is to be used as a guide only. All dimensions are estimates only and may not be exact measurements.