

SOLD

ENTERTAIN AND ENJOY

Free flowing and functional with a focus on family enjoyment, this incredibly spacious single level home is ready to be enjoyed throughout the year, with its impressive layout encompassing formal, family and alfresco entertaining.

Relishing the benefits of easy clean tiles, the L-shaped lounge and dining room welcomes you into the home before linking through to the neatly presented kitchen equipped with a 900mm gas stove, stainless steel wall oven and breakfast bench.

Spanning out from here, the meals zone and family room forms a fabulous social hub, extending out onto a spacious alfresco zone and backyard for year-round entertaining with family and friends.

Suiting the family's accommodation needs, the three bedrooms include a master bedroom with built-in-robos leading to the ensuite, while a family bathroom, separate toilet and full-sized laundry complete the home's dimensions.

Embraced by attractive gardens on 605sqm approx. and complemented by the inclusions of ducted heating, evaporative cooling, garden shed plus a long driveway with gated vehicle access to the alfresco zone.

Ideal for those with young children, the home sits in a quiet court with easy walking access to Chalcot Lodge Primary, Sydney Pargeter Reserve and Chalcot Lodge Reserve, near Endeavour Hills Shopping Centre, buses plus Monash Freeway.

3 BED | 2 BATH | 2 CAR

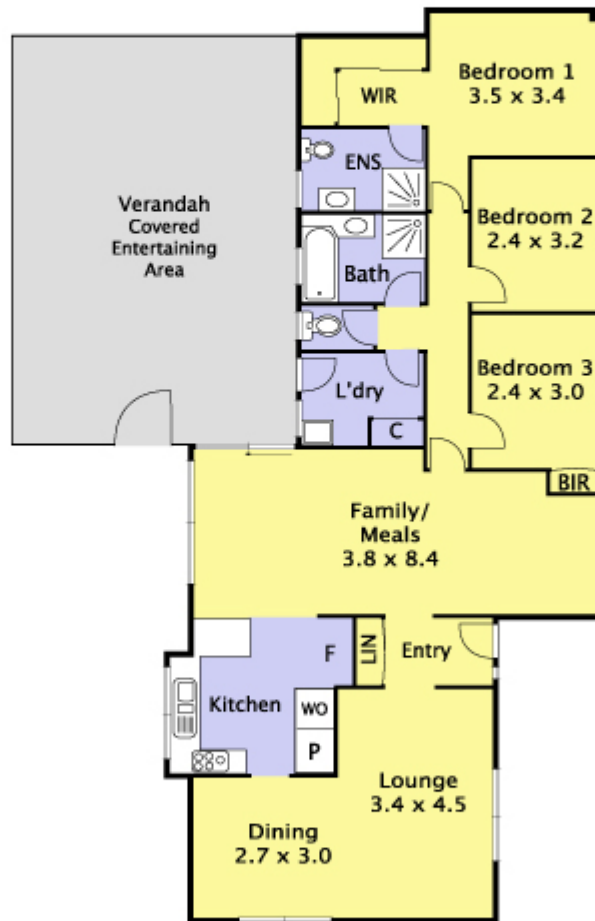
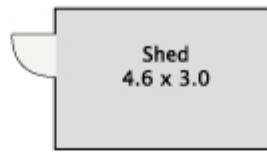
PRICE:
\$745,000

OPEN FOR INSPECTION:
N/A



Marko Ghattas
0403170130
marko@atrealty.com.au
www.lucianorealty.com.au

1 Buckland Court ENDEAVOUR HILLS



"While every precaution has been taken to verify this information, it does not constitute any representation by the agent or vendor".

Disclaimer: Please note this floor plan is for marketing purposes and is to be used as a guide only. All dimensions are estimates only and may not be exact measurements.