



SOLD

**UPDATED HOUSE ON PRIVATE TROPICAL
BLOCK IN THE TSS PRECINCT CONTACT
JANINE - 0419534436**

A light-filled 4-bedroom family paradise on a tree-lined street with large salt water pool awaits you now. This property is an oasis fit for a discerning family who seek work from home, entertainment and dining convenience right in the heart of the Gold Coast. With Q1 just over the horizon and public transport within walking distance, you have immediate access to everything: theme parks, beach, shopping, medical, schools, transport and so much more all within a few easy minutes' drive, bike, bus or light rail trip. Nearby recreation and shopping include Sea World, Southport CBD, Broadwater Parklands, Australia Fair, Brickworks Ferry Road Markets, Southport Park, Ashmore Plaza, Chevron Island and just minutes to the world famous Surfers Paradise beaches. You will also be spoilt for choice when it comes to dining out with renowned restaurants, take away and local pubs all within easy reach to add to the easy going and enviable beach going lifestyle you will enjoy as the fortunate new owner of 16 Coolibah Street Southport on the fabulous Gold Coast. The well established tropical garden, poolside Bali hut and garden lighting will make you feel as though you are on holiday all year round. Be quick !

FEATURES-

- * Solar Gard LX70 energy saving window films block out 99% of UV
- * Fujitsu reverse cycle units in every room
- * Solahart hot water system
- * Fast NBN HFC connection
- * CCTV for peace of mind
- * Hardwood floors throughout upstairs
- * Master bedroom with built-in-robe and updated en-suite
- * Three additional, spacious bedrooms
- * Main bathroom with shower and bath and separate toilet
- * Spacious downstairs area with bathroom, storage and potential for dual living
- * Large kitchen with stainless steel appliances including Smeg dishwasher, AEG oven, Bosch cook top, LG French door fridge

4 BED | 3 BATH | 2 CAR

PRICE:
\$915,000

OPEN FOR INSPECTION:
N/A

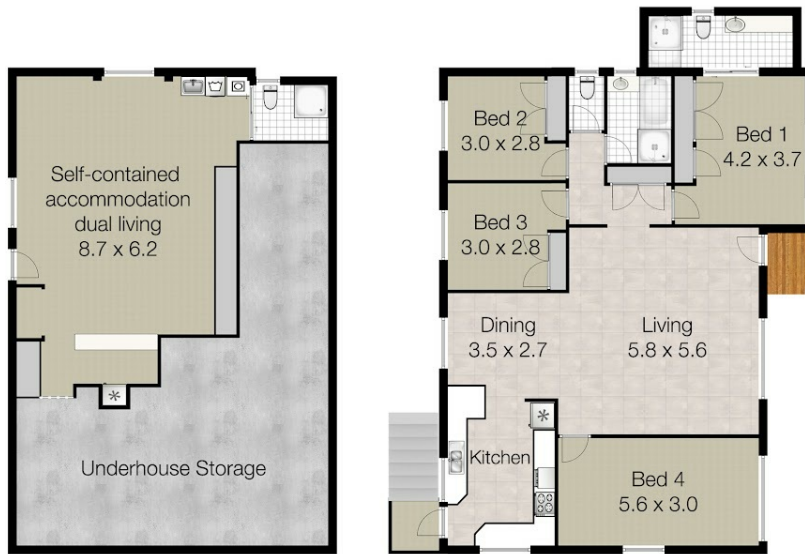


Janine Redwood
0419534436
janine@atrealty.com.au
www.atrealty.com.au

16 Coolibah Street Southport

Total Approximate Floor Area 205 sqm

Total Land Area 607 sqm



Whilst every attempt has been made to ensure the accuracy of the floor plan. Measurements of doors, windows rooms and any other items are approximate and no responsibility is taken for any error, omission or misstatement. This plan is for illustrative purposes only and should be used as such by any prospective purchaser.

Disclaimer: Please note this floor plan is for marketing purposes and is to be used as a guide only. All dimensions are estimates only and may not be exact measurements.