



**SOLD**

**VIEWS THAT WILL TAKE YOUR BREATH AWAY!  
PLEASE NOTE THAT OPEN TIMES ARE IN NSW  
TIME!**

**4 BEDROOM 4 BATHROOM 4 CAR**

Set on a 563m<sup>2</sup> block of land in an elevated street with a short drive to local shops, supermarkets, and sporting fields. This house is waiting for a Family, Tradie or generational family to come in and call it home.

**Main Level -**

- Large master bedroom with walk-in robe and ensuite
- 2 other large bedrooms with built-in robes
- Ample sized laundry - with separate toilet
- Bathroom with bath tub and separate shower
- Open plan kitchen/family room/dining and large bi-fold doors opening to decking looking out over panoramic ocean views
- 2 car garage with additional parking
- Separate garage for storage
- landing space for trailer

**Down Stairs-**

- Separate, wet bar and lounge area
- Bedroom
- Bathroom
- Decking

**Lower Ground level -**

- Alfresco area with Oven/stove and sink area
- Separate Spa area
- Outside toilet
- Outside bathroom

**ADDITIONAL EXTRAS:-**

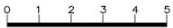
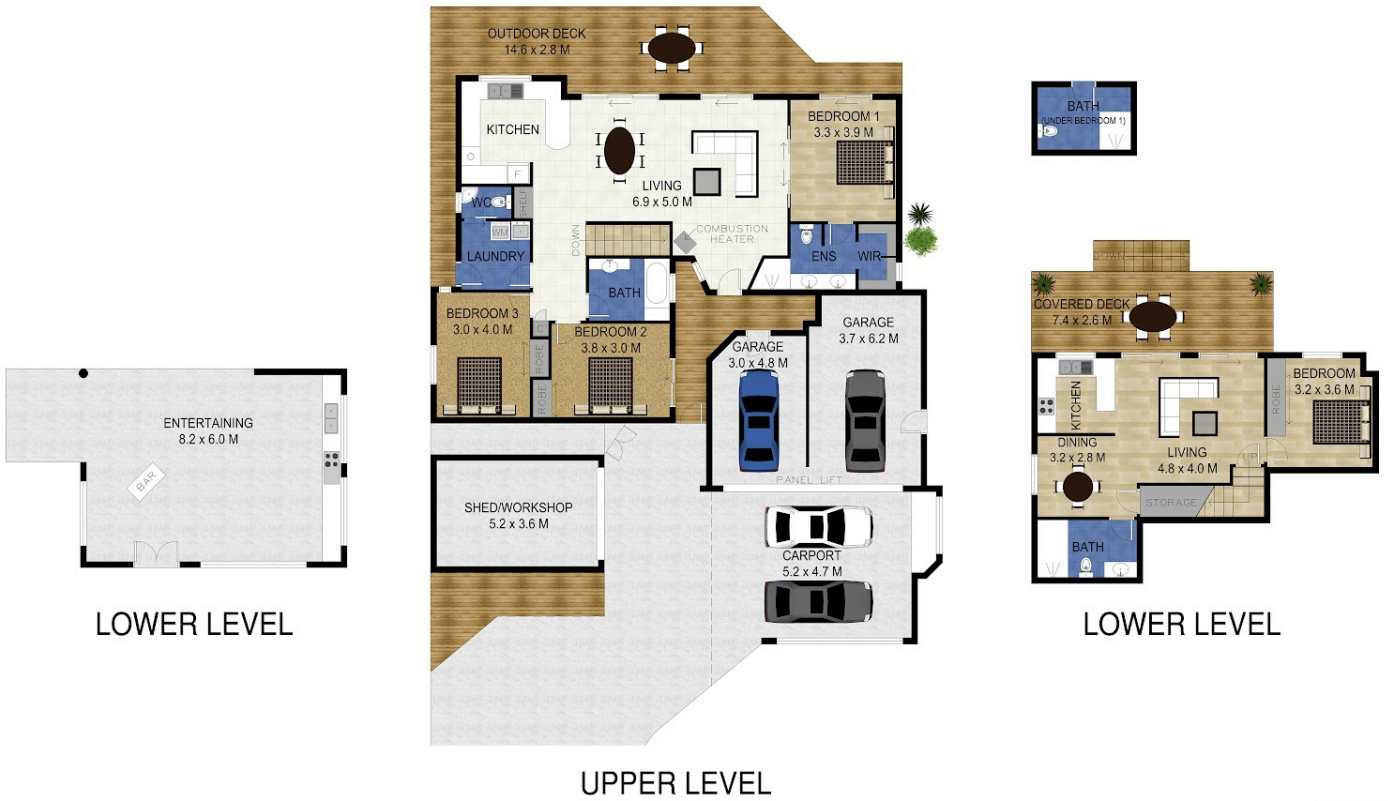
**4 BED | 3 BATH | 4 CAR**

**PRICE:  
\$780,000**

**OPEN FOR INSPECTION:  
N/A**



**Sharon Smythe**  
**0412195500**  
sharonsmythe@atrealty.com.au  
[www.atrealty.com.au](http://www.atrealty.com.au)



Scale in metres. Indicative only. Dimensions are approximate. All information contained herein is gathered from sources we believe to be reliable. However we cannot guarantee its accuracy and interested persons should rely on their own enquiries.

INTERNAL : 239 SQ.M.  
 EXTERNAL : 155 SQ.M.  
 SHED : 19 SQ.M.



55 Seaview Street, Tweed Heads South



Disclaimer: Please note this floor plan is for marketing purposes and is to be used as a guide only. All dimensions are estimates only and may not be exact measurements.

**Sharon Smythe**  
 0412195500  
 sharonmysythe@atrealty.com.au  
 www.atrealty.com.au

