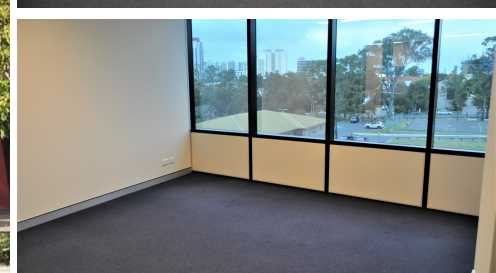


ADDRESS UPON REQUEST



**SOLD**

## IMMACULATE FULLY FITTED PROFESSIONAL OFFICE - 67M2

Ideal 3 to 4 person office

- 67m2 fully fitted office comprising Reception & waiting area, 2 large private offices and excellent kitchen
- Located in Tower 3 on the 3rd floor
- Excellent south facing outlook over park
- Secure basement car park included

\$215,000

Contact Exclusive Agent - Wayne Devenport  
0403 292 629

0 BED | 0 BATH | 0 CAR

PRICE:  
\$215,000

OPEN FOR INSPECTION:  
N/A



**Wayne Devenport**  
**0403292629**  
w.devenport@atrealty.com.au  
[www.atrealty.com.au](http://www.atrealty.com.au)