



**SOLD**

## TAKE IN THE SERENITY OF CASHMERE

Presenting to the market this fabulously elevated four bedroom lowset brick rendered steel frame home on a low maintenance impressive 1,320m2 block in the sought after Greenwoods Estate. Tastefully renovated throughout this home offers a slower pace lifestyle to enjoy your weekends entertaining and spending time with family.

Privacy is key when you are looking for larger blocks and this one ticks the box! Located in a quiet cul-de-sac with walking paths at your doorstep and Bill Madders Park a stone's throw away you will appreciate the serenity on offer here as you enjoy the treetop outlook.

An impressive entrance guides you through to the hub of the home you are welcomed by the high ceilings and open plan living. The newly renovated kitchen will have the chef of the family cooking up a storm, enjoying new appliances including a Bosch under bench oven, 40mm stone bench tops, large pantry, soft close cabinetry, dishwasher and breakfast bar where you can come together and discuss the happenings of the day or chat over a glass of wine while the meals are being prepared. This spacious area flows seamlessly out to the alfresco entertaining area where you are greeted by one of the largest FLATEST grass yards I've seen, perfect for the fur babies and children to run around and tire themselves out.

Back inside, there is ample space for guests and family to mill around and chat while preparations are taking place, in air-conditioned comfort nonetheless!

Further through the home you will appreciate the bedrooms all with built in robes and modern LED downlights. The master, generous in size, offers a large walk-in robe, brand new split system air-conditioner and a recently renovated ensuite with 40mm stone bench tops, large walk in shower and bath tub. The master also features large sliding doors out to the garden.

This home is a must see, the potential here is to move in put your feet up and relax or put a pool in (yes there is room and side access can be achieved).

Don't delay call Natalie today on 0419689309, this one will not last!!

At a Glance:  
Fully Fenced Elevated 1,320m2 block  
Built by Civic Steel Homes – 2003

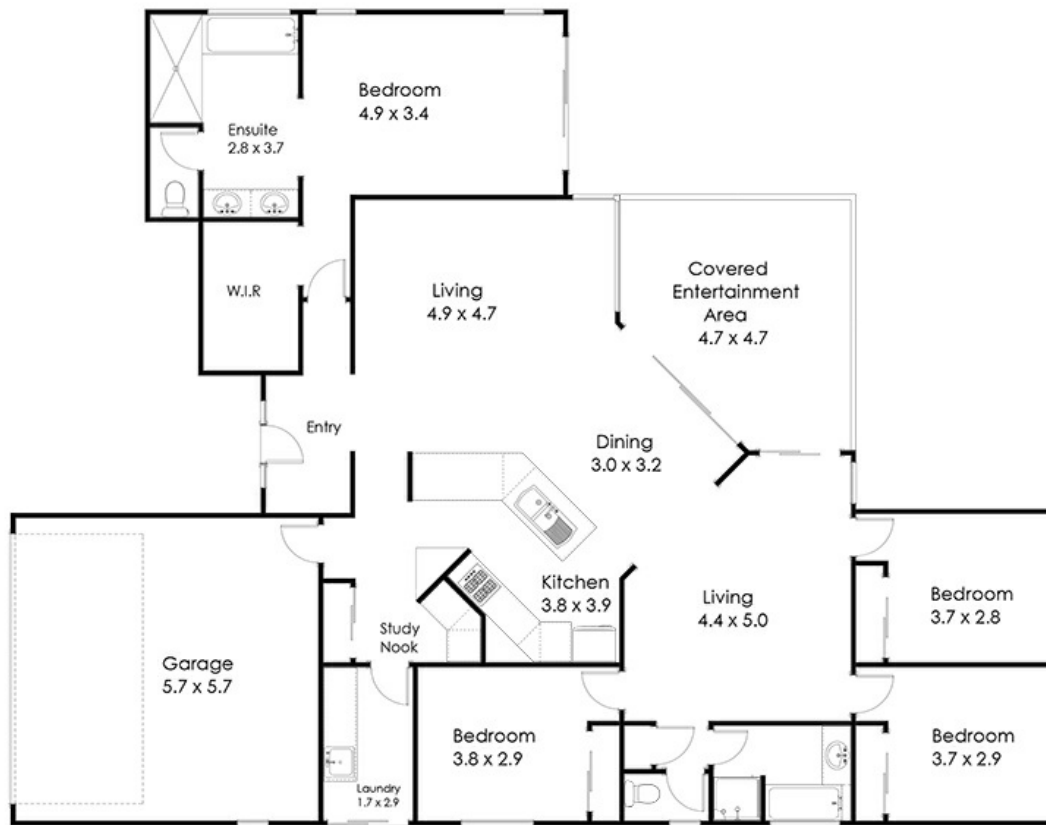
**4 BED | 2 BATH | 2 CAR**

**PRICE:**  
\$930,000

**OPEN FOR INSPECTION:**  
N/A



**Natalie Johnston**  
**0419689309**  
natalie@atrealty.com.au  
[Natalieatrealty](#)



## 9 Heron Close Cashmere 4500

Whilst every attempt has been made to ensure the accuracy of the floor plan contained here, measurements of doors, windows rooms and any other items and structures are approximate and no responsibility is taken for any error, omission or mis-statement. Bathroom and Kitchen fittings, cupboards and door types and laundry appliances and windows are tokens and approximate the actual fitting installed.

This plan is for illustrative purposes and should be used as such by any prospective buyer. Plan drawn by Eagle Eye Photography Service, www.eagleeyenq.com.au Copyright 2021. All rights reserved. No reproduction without license, contact photographer for more information.

@realty

Disclaimer: Please note this floor plan is for marketing purposes and is to be used as a guide only. All dimensions are estimates only and may not be exact measurements.