



**SOLD**

**PRICE REDUCED - VENDOR SAYS SELL !!!!  
GROUND FLOOR UNIT - LOTS OF LIGHT, LOTS  
OF ROOM**

ATTENTION all first home buyers, investors and downsizers. This is the perfect unit for you.

Light, bright and airy- perfectly located at the back of the unit block for maximum privacy. This ground floor unit is surrounded by yard: perfect for visitors and entertaining. If this is what you've been looking for..... then this is the unit for you.

This light and bright, corner unit comes complete with:

- 2 good sized bedrooms, complete with wooden floors, large built in wardrobes, ceiling fans and lots of natural light
- Newly refurbished kitchen with floor to ceiling high gloss cabinets, lots of bench space, stainless steel appliances including dishwasher
- Newly refurbished bathroom with large bathtub, lots of storage and lots of natural light
- Large tiled living room with double glass sliding doors onto your large patio area (with direct access onto the large grassed common area)
- High ceilings through-out
- Large windows allowing lots of natural light to flood unit, all windows with security
- Split system air-conditioning unit in lounge room
- Oversized single lock up garage with good sized laundry. Large mezzanine storage level.
- Unit is positioned at the back of unit block – providing security and privacy
- Direct access to grassed area directly from patio, as well as direct access to large grassed common area running along back of unit block
- Small pets may be permitted upon application to Body Corporate
- Rental appraised \$360- \$390/week. An excellent return on investment.
- Deviney St is centrally located with easy access to Morningside train station and local bus stops. Coles and Woolworths are also just down the road, as well as easy access to local schools, parks, and café precincts.

Please contact agent for Body Corporate Disclosure and fees, Council Rates and to view this fantastic property.

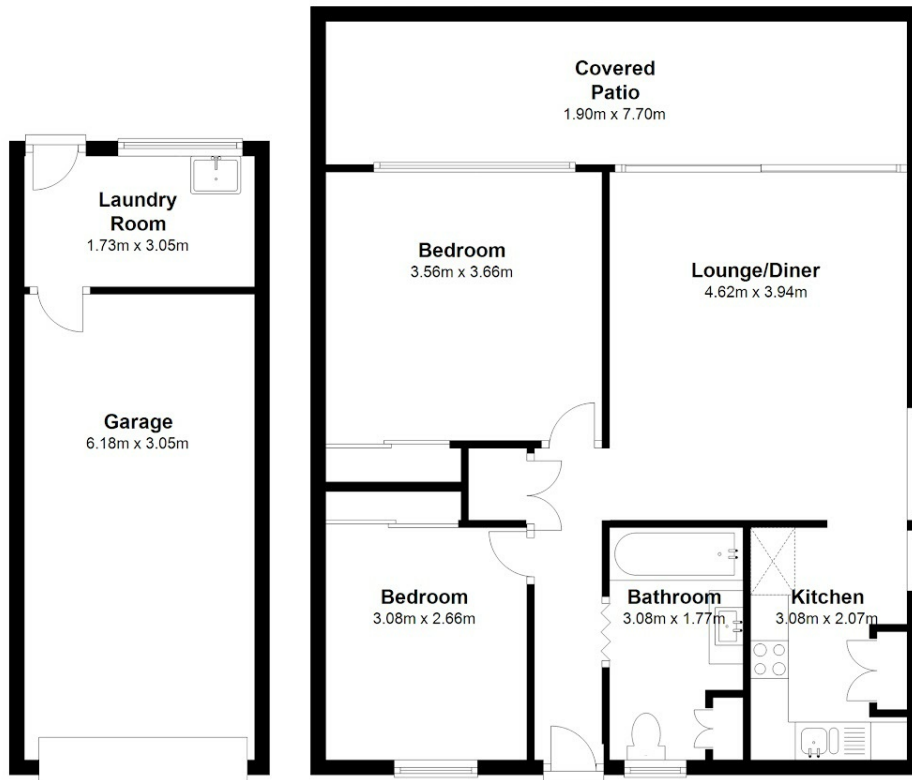
**2 BED | 1 BATH | 1 CAR**

**PRICE:**  
\$325,000

**OPEN FOR INSPECTION:**  
N/A



**Melinda Gawne**  
**0410692081**  
melinda@atrealty.com.au  
[www.atrealty.com.au](http://www.atrealty.com.au)



**Unit 1, 15 Deviney St, Morningside QLD 4170**

This floor plan is not to scale. Dimensions are approximate & therefore should only be used for illustrative purposes.

Total area: approx. 99.7 sq. metres

[www.fourwallsphotography.com.au](http://www.fourwallsphotography.com.au)

Disclaimer: Please note this floor plan is for marketing purposes and is to be used as a guide only. All dimensions are estimates only and may not be exact measurements.