



SOLD

PREMIUM BEACHFRONT LIVING WITH DIRECT BEACH ACCESS AWAITS YOU

Whether you're looking for that idyllic beachside home or a stunning investment property with never-to-be-built-out ocean views, this apartment is an absolute must-see. Perfectly positioned just steps from the water's edge, the lucky new owners of this prized Buddina beauty will enjoy a spacious layout, an unbeatable location and a long list of show-stopping features.

This three-bedroom, two-bathroom unit is set within the renowned Surfside On The Beach complex and will attract a wide range of astute house-hunters with its high income potential and its low Body corps

From the moment you step inside, you will be struck by the abundance of natural light and cooling sea breezes that flood the open-plan layout. Crisp neutral colour tones, oversized windows and an effortless connection to the outdoors enhance the laid-back yet luxurious holiday feel while the glorious outlook always remains the star of the show.

For the eager entertainer, the kitchen is well positioned and boasts sweeping benchtops, an abundance of storage, a tiled backsplash and a suite of quality appliances including a dishwasher. Friends can gather at the breakfast bar as you cook up a storm and admire views over the generous living and dining zone

Glass sliding doors open to the expansive, covered and north-facing balcony where you can start the day with a morning coffee, unwind for afternoon cocktails with friends or enjoy a delicious dinner on warm summer nights.

All the bedrooms are a great size and have ceiling fans for added comfort including the main

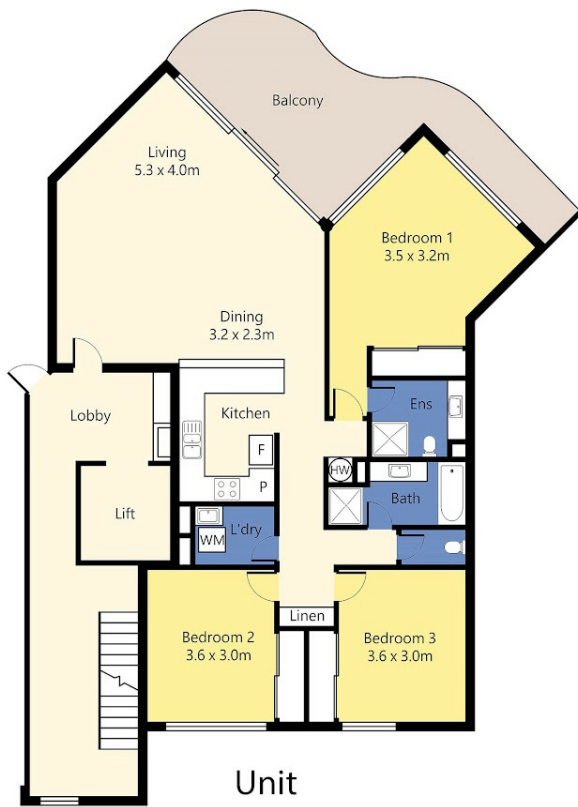
3 BED | 2 BATH | 1 CAR

PRICE:
\$1,275,000

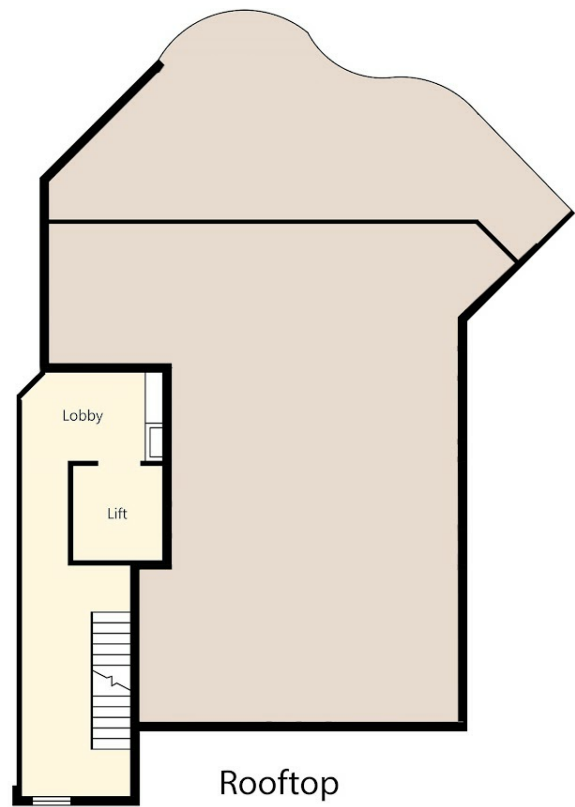
OPEN FOR INSPECTION:
N/A



Paula Anderson-Stevens
0431847986
aspex@atrealty.com.au
aspexproperty.com.au



Unit



Rooftop

Floor plan is for illustrative purposes only, subject to variations and not to exact scale.
 Areas are approximate only and are subject to change.
 Buyers should make their own enquiries and consult the identification plan in the disclosure documents for further details. Floor Plan drawn by iPhotorealstate.



23/147 Lowanna Drive, Buddina

Disclaimer: Please note this floor plan is for marketing purposes and is to be used as a guide only. All dimensions are estimates only and may not be exact measurements.