



SOLD

AN OPPORTUNITY LIKE NO OTHER! 630M2 APPROX. CORNER BLOCK!

A rare and exciting opportunity presents itself in a location that is truly, second to none. Set upon 630m² (approx.) of prime real estate.

This cosy three-bedroom home offers convenience and practicality, with a spacious living and dining area, a generous bathroom with separate toilet and a large well-equipped kitchen. The corner setting unlocks a potential multi dwelling site (STCA), in the heart of Laverton, allowing easy access to Laverton Train Station, shops, schools, swim school, childcare centers, parklands and freeways.

The existing brick home is perfect for the first home buyer, young family, downsizer or those looking to invest or develop (STCA).

A sensational opportunity in the middle of it all! Please call today to arrange your inspection!

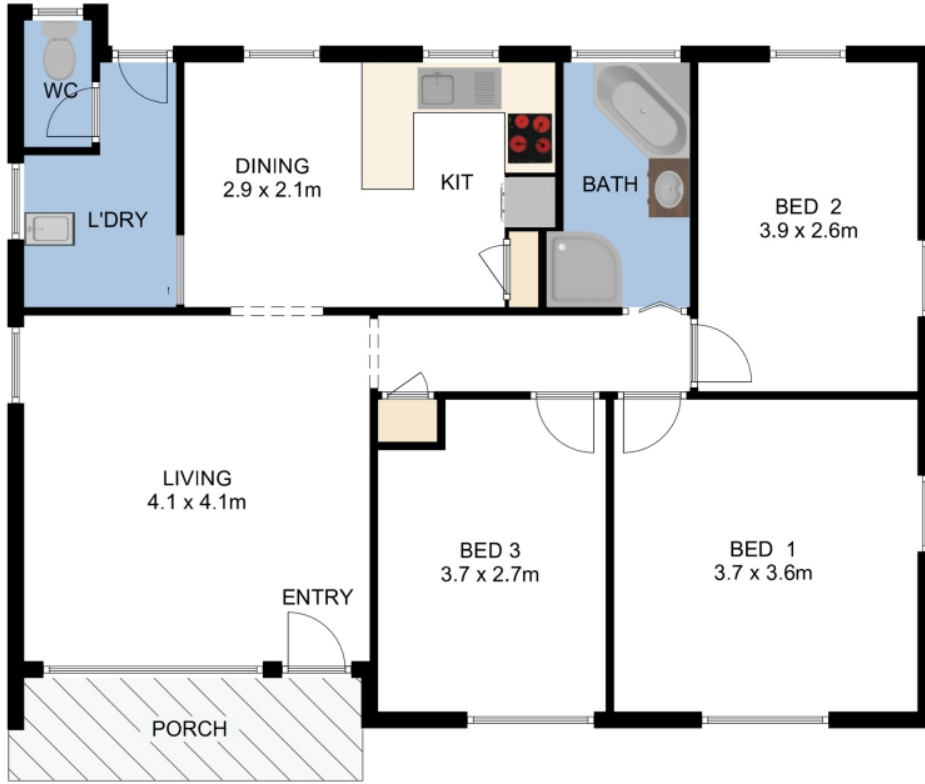
3 BED | 1 BATH | 1 CAR

PRICE:
\$675,000

OPEN FOR INSPECTION:
N/A



Joseph Hanna
0423966320
joseph@atrealty.com.au
www.atrealty.com.au



11 Sumers Street, Laverton



Whilst every attempt has been made to ensure the accuracy of the floor plan contained here, measurements of doors, windows, rooms and any other items are approximate and no responsibility is taken for any error, omission, or mis-statement. This plan is for illustrative purposes only and should be used as such by any prospective purchaser. The services, systems and appliances shown have not been tested and no guarantee as to their operability or efficiency can be given.



Disclaimer: Please note this floor plan is for marketing purposes and is to be used as a guide only. All dimensions are estimates only and may not be exact measurements.